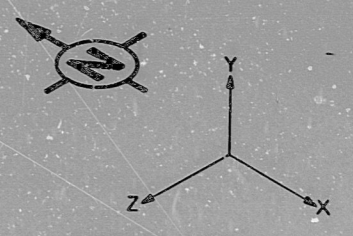
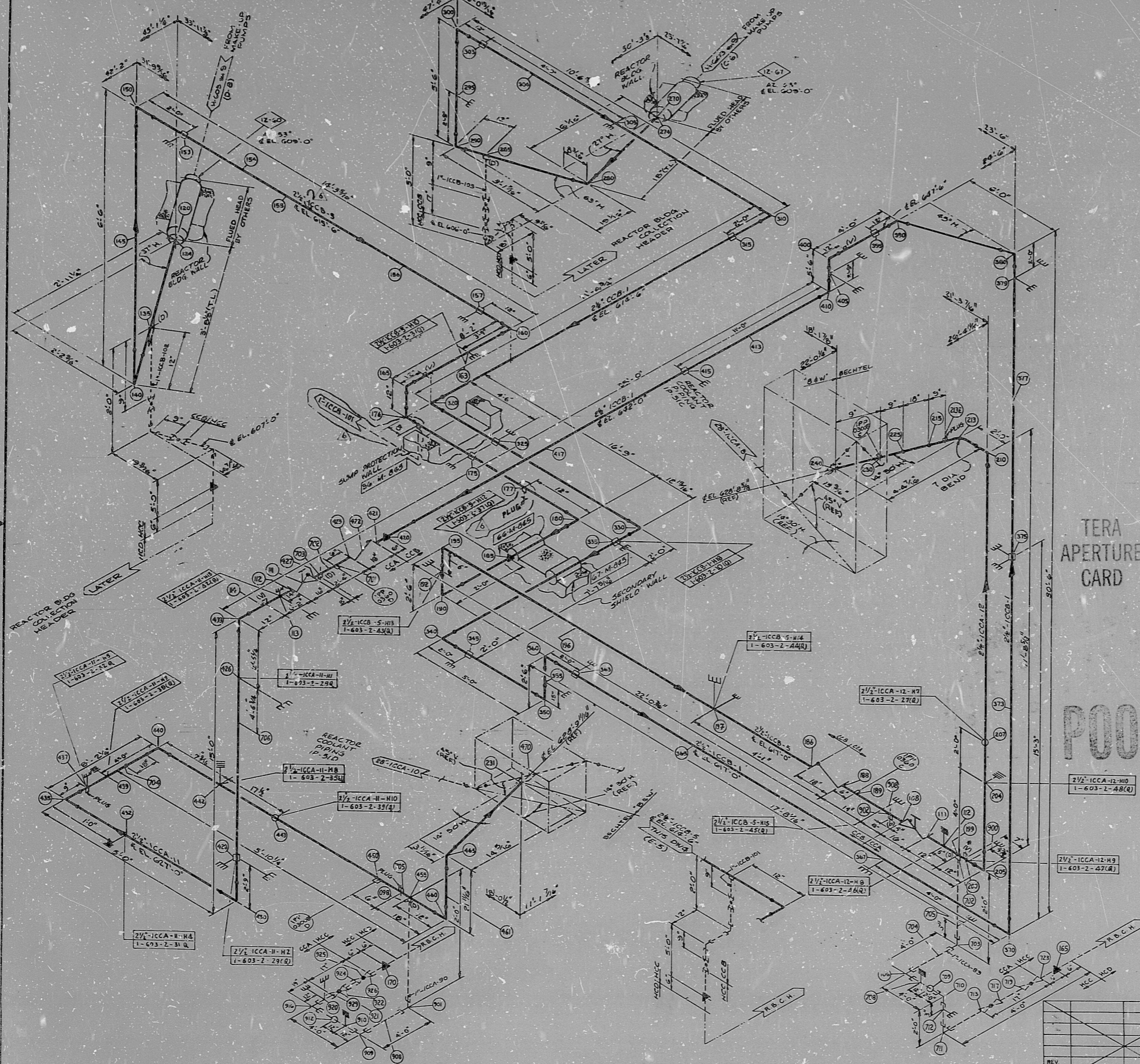


H-603SH2 (Q)



APPROX. L.F. 3/2"


- NOTES:
1. ALL PIPING TO BE FABRICATED AND ERECTED IN ACCORDANCE WITH SPECIFICATIONS 2200-M-005.
  2. FOR MATERIAL DESCRIPTION OF PIPE, VALVES AND FITTINGS, SEE PIPING CLASS SHEET NO. M-481, SHEET 5 OF 6.
  3. FOR PIPING AND RESTRAINT DIAGRAM SEE ENG. M-601, & M-605.
  4. FOR EQUIPMENT LISTS SEE M-485.
  5. FOR INSTRUMENT CONNECTIONS SEE DRAWING M-483.
  6. NO ALLOWANCE HAS BEEN MADE FOR WELDED JOINTS OR GASKETS IN V. ALL PIPING IS DIMENSIONED IN THE COLD STATE UNLESS OTHERWISE NOTED BY THE DRAWING.
  7. FOR PIPING SYSTEM COMPOSITE DRAWING(S) THIS AREA SEE M-605, M-606, M-607.
  8. FOR INSULATION SEE ENG. M-486.
  9. PIPE RINGS UNLESS OTHERWISE NOTED HAVE A NOMINAL COVERLINE SPACING OF FIVE (5) TIMES THE NOMINAL PIPE DIAMETER.
  10. FOR PIPING AND RESTRAINT SYMBOLS SEE ENG. M-600 THESE ARE V.
  11. FIELD WELD JOINTS UNLESS SPECIFICALLY REQUIRED ARE INDICATED (W).
  12. FOR VENTS AND DRAINS SEE DRAWING M-482. VENTS AND DRAINS ARE INDICATED (V) AND (D).
  13. ALL FACT TO FACT AND ENG. TO ENG. DIM. OF PIPING VALVES ARE FOR PIPE ENDS, UNLESS OTHERWISE NOTED.
  14. 
  - 15. 
  - 16. 
  - 17. HANGERS INDICATED ON THIS ISD ARE BECHTEL DESIGNED HANGERS. FOR ALL OTHER HANGERS THIS DRAW. SEE CHAINWELL HANGER DWG. GH-603SH.2

REFERENCES DWGS:  
 M-300 TYPES OF FLUID HEAD FITTINGS FOR CONTAINMENT PIPING PENETRATIONS  
 M-301 REACTOR BLDG. MECHANICAL PENETRATION SCHEDULE

POOR ORIGINAL

REV.	DATE	BY	CHK	STAMP	DATE
1	11/15/68	CP	MS		
2	11/15/68	CP	MS		
3	11/15/68	CP	MS		
4	11/15/68	CP	MS		
5	11/15/68	CP	MS		
6	11/15/68	CP	MS		

**BECHTEL**  
 ANNE ARBOR, MICHIGAN

MIDLAND PLANT UNITS 1 & 2  
 CONSUMERS POWER COMPANY

HANGER ISOMETRIC  
 MAKE UP AND PURIFICATION  
 SYSTEM UNIT-1  
 (REACTOR BLDG. H.P. INJECTION)

JOB NO. 7220 DRAWING NO. H-603 SH.2 (Q) REV. 6

REV.	DATE	BY	CHK	STAMP	DATE

30X



70

RIDS

8112220137

