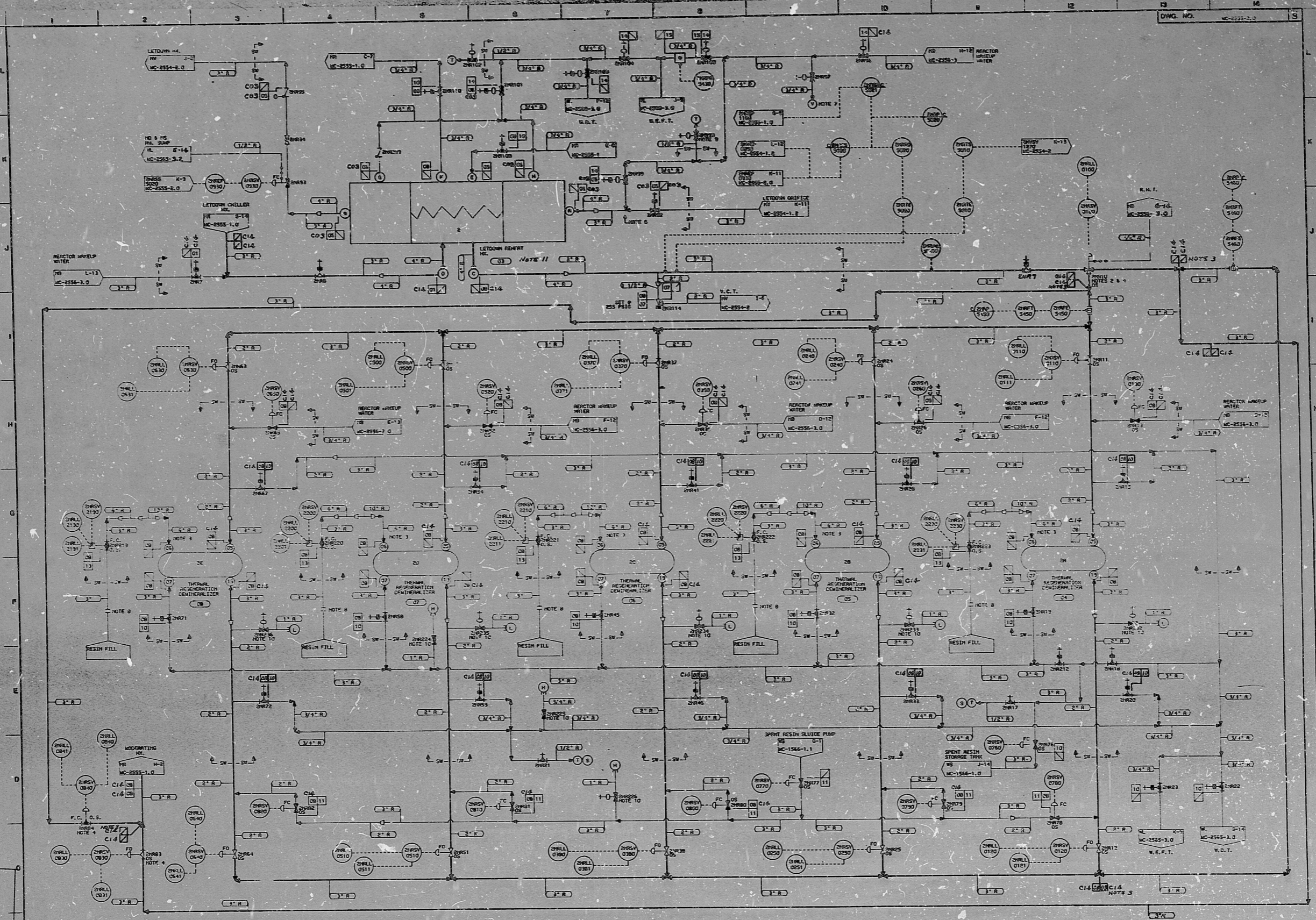


007.01.010 LETDOWN REHEAT HEAT EXCHANGER  
007.01.014 SYSTEM

ITEM NUMBERS



- NOTES
1. ALL VALVES PLACED FOR REHEAT REMOVE (DILUTION).
  2. FILL TO WARM RELEASE POSITION.
  3. INDICATE BY DOWN BRANCH OR BYPASS LINE.
  4. REMOVE THERMAL REGENERATION SIGNAL.
  5. HIGH POINT OF PIPING.
  6. LOCATE VENT CLUSE TO CEILING AND VENTILATION EXHAUST UNIT.
  7. LOCATE PUMP USED FOR COOLING ISOLATION.
  8. USE RELIEF VALVES FOR VENTS.
  9. VENTS AND DRAIN NEEDED BY CONNECTION FOR FLUSH AND HYDRO.
  10. THIS EQUIPMENT WAS NOT BUILT TO ASME SEC. VIII DIV. 1. HOWEVER, IT WAS BUILT TO THE APPLICABLE CODE.

DESIGN PARAMETERS

LINE LISTING	PRESSURE	TEMPERATURE	CLASS	MATERIAL
01	225 PSIG	145°F	C	SS
02	225 PSIG	145°F	C	SS
03	225 PSIG	145°F	C	SS
04	225 PSIG	145°F	C	SS
05	225 PSIG	145°F	C	SS
06	225 PSIG	145°F	C	SS
07	225 PSIG	145°F	C	SS
08	225 PSIG	145°F	C	SS
09	225 PSIG	145°F	C	SS
10	225 PSIG	145°F	C	SS

REVISIONS

NO.	REVISIONS	CHKD.	APPD.	DATE
1	REV. PER C.O. 2555-2.01			
2	REV. PER C.O. 2555-2.02			
3	REV. PER C.O. 2555-2.03			
4	REV. PER C.O. 2555-2.04			
5	REV. PER C.O. 2555-2.05			
6	REV. PER C.O. 2555-2.06			
7	REV. PER C.O. 2555-2.07			
8	REV. PER C.O. 2555-2.08			
9	REV. PER C.O. 2555-2.09			
10	REV. PER C.O. 2555-2.10			
11	REV. PER C.O. 2555-2.11			
12	REV. PER C.O. 2555-2.12			

G.A. CONDITION 2  
G.A. CONDITION 1

DUKE POWER COMPANY  
NORON REHEAT STATION UNIT 2  
FLOW DIAGRAM OF  
REACTOR MAKEUP WATER DEMINERALIZER  
SYSTEM (100)

DATE: 11/15/60  
DRAWN BY: J. W. ALLEN  
CHECKED BY: J. W. ALLEN  
DATE: 11/15/60

DWG. NO. MC-2555-1.0

FOR INFORMATION ONLY

SI  
APERTURE  
CARD

CL. 2 4/18/60

8904030452

PDR RIDS

