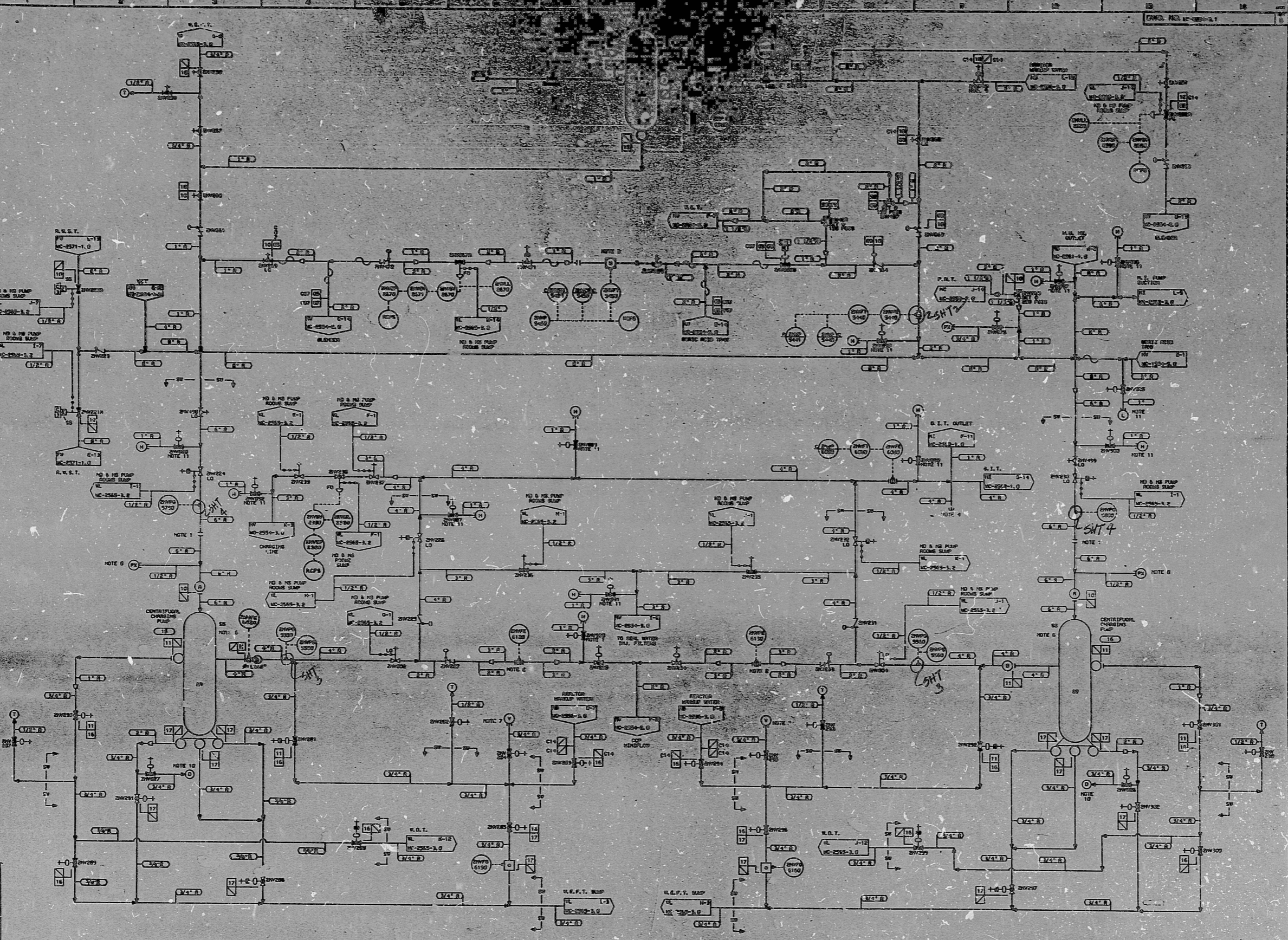


007.001.011 SYSTEM
 007.001.002 CENTRIFUGAL CHARGING PUMP 2A
 007.001.003 CENTRIFUGAL CHARGING PUMP 2B

ITEM NUMBERS



- NOTES:
1. TEMPORARY STARTER IS PLACED IN THE SWAMP PIECE DURING INITIAL FLUSHING OPERATIONS. STARTER MUST BE REMOVED BEFORE PUMP START-UP.
 2. PROVIDE MINIMUM OF 3 FT. STRAIGHT RUN AFTER FLOW ORIFICE. MIN-FLOW ORIFICE SUPPLIED BY PUMP MANUFACTURER.
 3. ELECTROMAGNETIC COUPLER IN VERTICAL PIPE RUN.
 4. LINES COVERED OFF AT UNIT & BOND IN U. SYSTEM. TRANSPARENT METALIC COUPLERS.
 5. REFER TO DRAWING MC-2574-1 & MC-2574-2 FOR PUMP COUPLER. TIGHT CLOSE TO DRILLING AND VENTILATION COUPLER DATA, (IF POSSIBLE).
 6. PRESSURE TEST CONNECTION TO BE CONSISTENT OF STANDARD PIPING IS ONLY REQUIRED FOR THE TEMPORARY U.C. PIPING.
 7. LOCK VALVE DURING RESTART OPERATIONS.
 8. LOCK VALVE DURING STOPPING OPERATIONS.
 9. VENTS AND DRIP LINES TO BE INSTALLED FOR FLUSH AND DRAINING PURPOSES BY CONTRACTOR FOR THIS WORK.
 10. THIS WORK WILL BE COMPLETED AFTER THE SYSTEM IS STRAPPED.

| NO. | DESCRIPTION | REVISION | DATE | BY | CHKD. |
|-----|--------------------------|----------|------|----|-------|
| 1 | ISSUED FOR CONSTRUCTION | | | | |
| 2 | REVISED FOR CONSTRUCTION | | | | |
| 3 | REVISED FOR CONSTRUCTION | | | | |
| 4 | REVISED FOR CONSTRUCTION | | | | |
| 5 | REVISED FOR CONSTRUCTION | | | | |
| 6 | REVISED FOR CONSTRUCTION | | | | |
| 7 | REVISED FOR CONSTRUCTION | | | | |
| 8 | REVISED FOR CONSTRUCTION | | | | |
| 9 | REVISED FOR CONSTRUCTION | | | | |
| 10 | REVISED FOR CONSTRUCTION | | | | |
| 11 | REVISED FOR CONSTRUCTION | | | | |
| 12 | REVISED FOR CONSTRUCTION | | | | |
| 13 | REVISED FOR CONSTRUCTION | | | | |
| 14 | REVISED FOR CONSTRUCTION | | | | |
| 15 | REVISED FOR CONSTRUCTION | | | | |
| 16 | REVISED FOR CONSTRUCTION | | | | |
| 17 | REVISED FOR CONSTRUCTION | | | | |
| 18 | REVISED FOR CONSTRUCTION | | | | |
| 19 | REVISED FOR CONSTRUCTION | | | | |
| 20 | REVISED FOR CONSTRUCTION | | | | |

| NO. | REVISIONS | DATE | BY | CHKD. |
|-----|--------------------------|------|----|-------|
| 1 | ISSUED FOR CONSTRUCTION | | | |
| 2 | REVISED FOR CONSTRUCTION | | | |
| 3 | REVISED FOR CONSTRUCTION | | | |
| 4 | REVISED FOR CONSTRUCTION | | | |
| 5 | REVISED FOR CONSTRUCTION | | | |
| 6 | REVISED FOR CONSTRUCTION | | | |
| 7 | REVISED FOR CONSTRUCTION | | | |
| 8 | REVISED FOR CONSTRUCTION | | | |
| 9 | REVISED FOR CONSTRUCTION | | | |
| 10 | REVISED FOR CONSTRUCTION | | | |
| 11 | REVISED FOR CONSTRUCTION | | | |
| 12 | REVISED FOR CONSTRUCTION | | | |
| 13 | REVISED FOR CONSTRUCTION | | | |
| 14 | REVISED FOR CONSTRUCTION | | | |
| 15 | REVISED FOR CONSTRUCTION | | | |
| 16 | REVISED FOR CONSTRUCTION | | | |
| 17 | REVISED FOR CONSTRUCTION | | | |
| 18 | REVISED FOR CONSTRUCTION | | | |
| 19 | REVISED FOR CONSTRUCTION | | | |
| 20 | REVISED FOR CONSTRUCTION | | | |

FOR INFORMATION ONLY

SI APERTURE CARD

ON CONDITION 2
ON CONDITION 1

DUKE POWER COMPANY
INDIANAPOLIS NUCLEAR STATION UNIT 2

FLOW DIAGRAM OF
CHARGING PUMP SYSTEM CONTROLS
ATTENTION (HW)

CL 2 44 DRD SHT 1

8904030402

PDR RIDS

