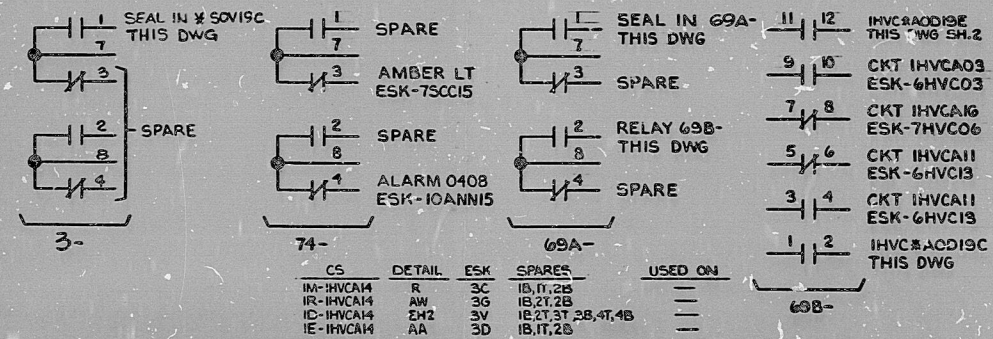


VALVE POSITION	FUNCTION					
	33 FULL OPEN	33 FULL CLOSE	IHVC#A0DBA	IHVC#A0DGA	IHVC#A0DISC	IHVC#A0B35A
1 A - B	SP	GREEN	GREEN	GREEN	GREEN	
2 C - D	SP	SP	SP	SP	SP	
3 E - F	SP	SP	SP	SP	SP	
4 G - H	SP	SP	SP	SP	SP	
5 A - B	SP	RED	RED	RED	RED	
6 C - D	SP	RED	RED	RED	RED	
7 E - F	SP	SP	SP	SP	SP	
8 G - H	SP	SP	SP	SP	SP	



NO.	DATE	BY	CHKD	DESCRIPTION
10	11-27-83	INCORP. EDCR GVO71
9	8-4-83	INCORP. EDCR GVO71
8	INCORP. EDCR GVO71
7	INCORP. EDCR GVO71
6	INCORP. EDCR GVO71
5	INCORP. EDCR GVO71
4	INCORP. EDCR GVO71
3	INCORP. EDCR GVO71
2	INCORP. EDCR GVO71
1	INCORP. EDCR GVO71

NOTES:
 1. LOGIC DIAGRAM LSK-22-9, 1A, 1B, 1D & 1H.
 2. CONTACT CLOSURE ON HIGH RADIATION SET VENDOR DWG GAC 0386-170 SW FILE NO. 0247.250-327-030.

NUCLEAR SAFETY RELATED
 DOCUMENT USER
 CONSULT E&DCR/N&D
 LISTING FOR CHANGES
QA CAT I

ELEMENTARY DIAGRAM - 120V CMT CRT
 UNIT 1 CONTROL ROOM AIR HANDLING DAMPERS
 RIVER BEND STATION - UNIT 1
 GULF STATES UTILITIES COMPANY

STONE & WEBSTER ENGINEERING CORPORATION
 12210-ESK-7HVCO1
 SHEET 1 OF 2
 CF-0104

FOR INFORMATION ONLY

8412180042

PDR RIDS

