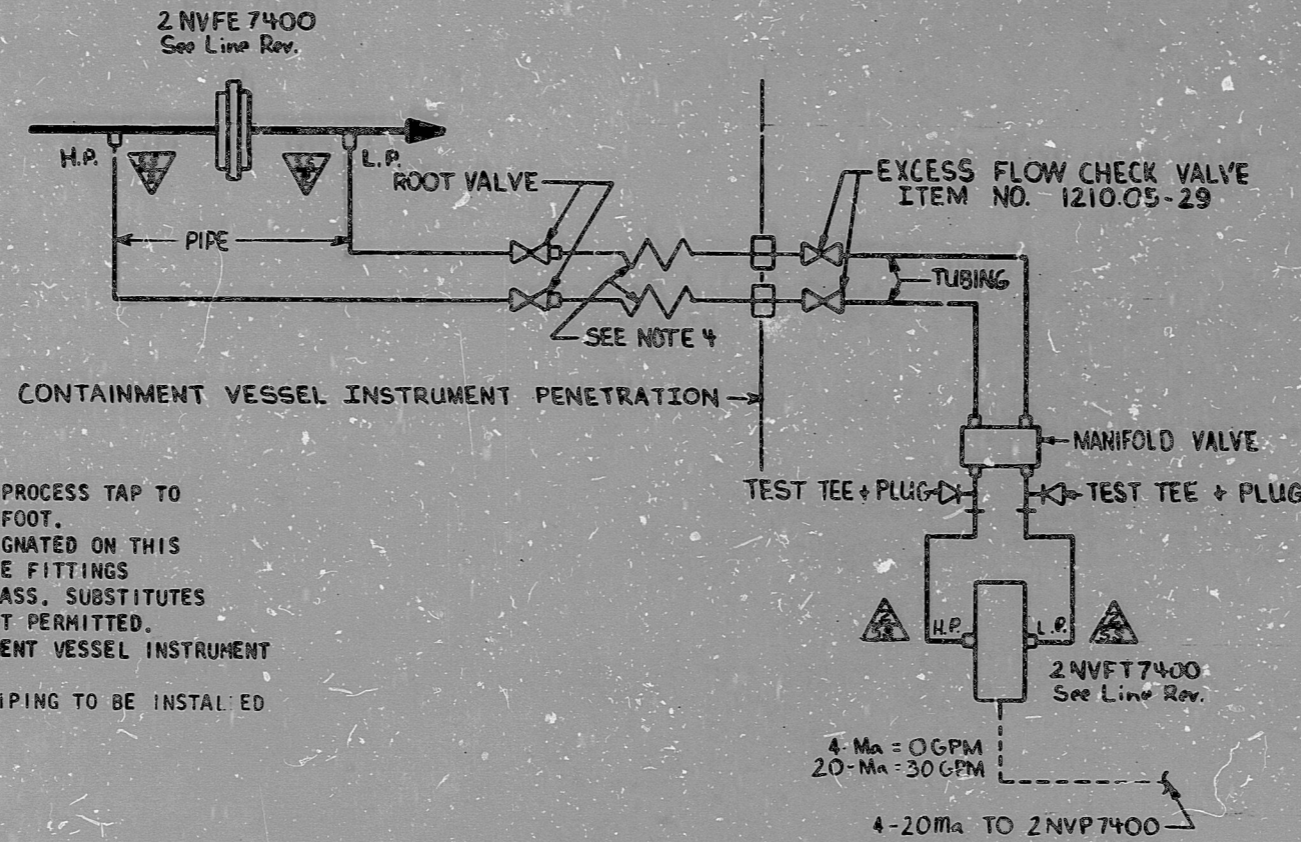


D. CARRIL, INC. 2757-2

NUCLEAR SAFETY-RELATED EXCLUSIONS

- 1. Fittings, tubing, piping & valves (not part of a safety-related piping system, etc.)
 - a) HCNE
- 2. Instruments (do not serve a safety function)
 - a) 2 NVFE7400, 2 NVFT7400
 - 2 NVP 7400



NOTES

- 1. SLOPE IMPULSE LINE DOWNWARD FROM PROCESS TAP TO INSTRUMENT A MINIMUM OF 1/4" PER FOOT.
- 2. FITTINGS, TUBING, AND VALVES DESIGNATED ON THIS DETAIL BY CLASSIFICATION 5b OF THE FITTINGS CLASSIFICATION LIST ARE SAFETY CLASS. SUBSTITUTES FROM OTHER CLASSIFICATIONS ARE NOT PERMITTED.
- 3. REFER TO MC-1499-M12 FOR CONTAINMENT VESSEL INSTRUMENT PENETRATION DETAIL.
- 4. EXPANSION COIL, ROOT VALVES AND PIPING TO BE INSTALLED PER ISA-A-11.

FUNCTIONAL DESCRIPTION:

2 NVFT7400 MONITORS FLOW DOWNSTREAM OF THE EXCESS LETDOWN HX THRU 2 NVFE7400 AND PROVIDES A SIGNAL TO 2NVP 7400.

**Q A CONDITION 1
NUCLEAR SAFETY RELATED**

(EXCEPT AS EXCLUDED ABOVE)

DUKE POWER COMPANY
MCGUIRE NUCLEAR STATION UNIT NO. 2

INSTRUMENT DETAIL

EXCESS LETDOWN HX

OUTLET FLOW

NO.	REV. IONS	DRM	CHKD	DATE	APPR	DATE	INSPECTED			DESIGNER	DATE	DATE
							CIVIL	ELEC.	MECH.			
0	ORIG. PER NSM-MG-20463/											
	GO, IMP. DATE 7-20-88											

DWG. NO. MC-2499-NV69

REV. 0

FOR INFORMATION ONLY

CL-2 Hyslo SH3

SI
APERTURE
CARD

8904030331

PDR RIDS

