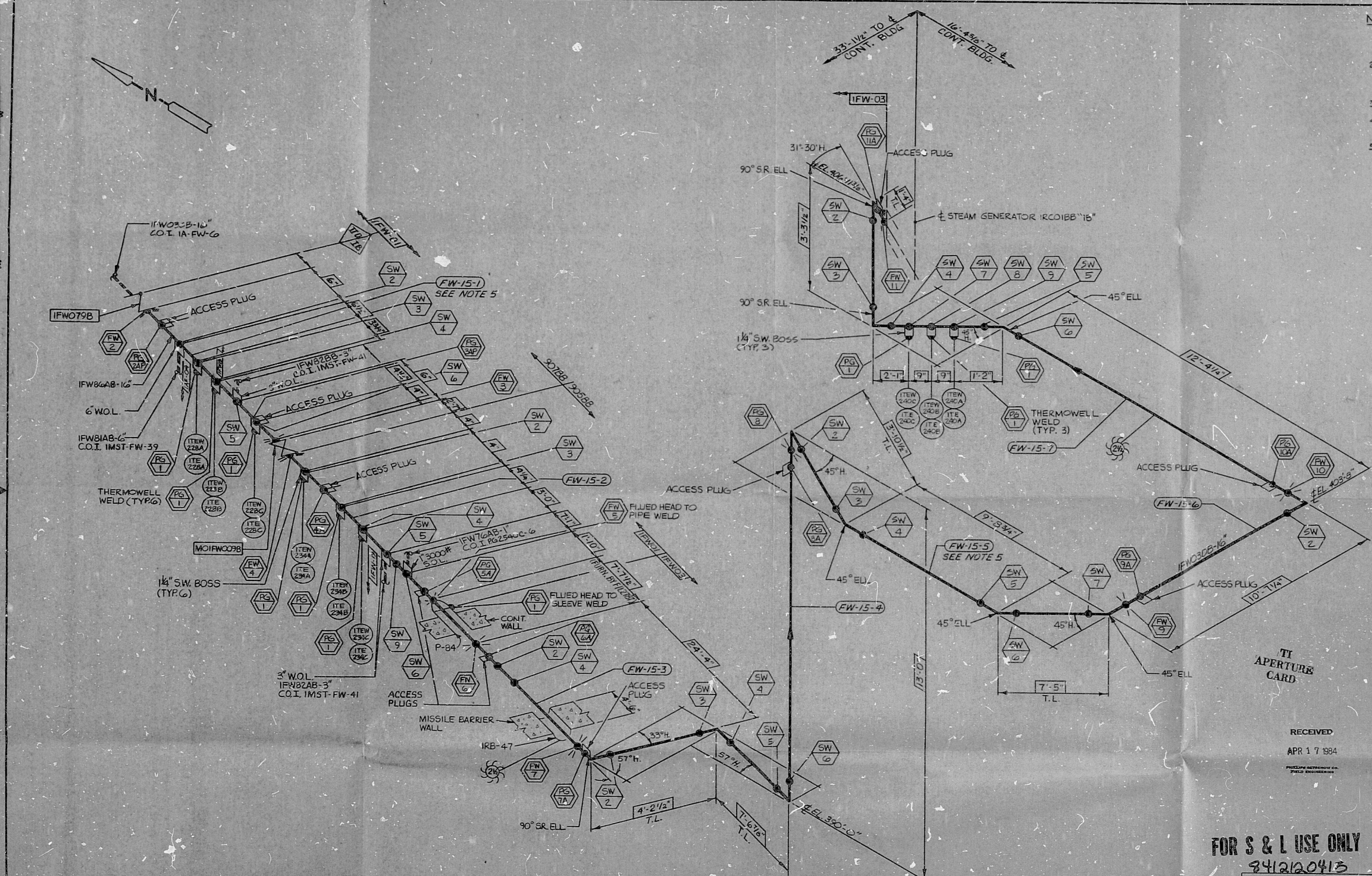
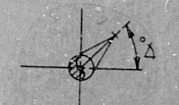


10 9 8 7 6 5 4 3 2 1



- NOTES**
1. THIS DWG IS TO SERVE AS AN AS-CONST. PIPING DWG. TO REPLACE ORIGINAL SW 150 FW-15.
  2. THIS DWG. APPLIES ONLY FOR AS-CONST. DIM. (SHOWN IN BOXES), PIPING CONFIGURATION AND VALVE ORIENTATION.
  3. REFER TO SWO 1725.
  4. SYMBOL DENOTES RATTLE CLEARANCE.
  5. SA-333 GR.6 MAT'L SUPPLIED BY SOUTHWEST FAB CO. PER ECN-81.



**VALVE ORIENTATION**

VALVE NUMBER	DETAIL	VIEWED LOOKING	ANGLE $\Delta$
IFW079B	N/A	N/A	N/A
MOIFW09B	A	N-EAST	90°

**TI APERTURE CARD**

QUAN	SPOOL NO	SW SHT NO	PCO NO
1	FW-15-1	15	IFW-03
1	2	16	
1	3	17	
1	4	18	
1	5	19	
1	6	20	
1	7	21	

RECEIVED  
APR 17 1984

**FOR S & L USE ONLY**  
341210413

CLUBSYSTEMS  
IFW01, IFW02

ASME SECT. III 1974 WADD  
THRU SUMMER 1975 d.2  
CARBON STEEL

CLASS  NUCLEAR  
B  NON NUC

DESIGN TABLE  
M540-1(A)  
M540-1(G)  
M540-5(M)  
M540-4(S)

WELD PROC  
N/A

SCALE NONE

PHILLIPS, GETSCHOW CO

BRANDYARD STATION SPEC L 7739

UNIT 1 BLDG CONT. W/O No. N/A

FEEDWATER

DWG NO IC-FW-15

ITEM	QUAN	DESCRIPTION	BILL OF MATERIAL
PIPE <td></td> <td></td> <td></td>			
FITTINGS			
FLANGES			
ROLS & NUTS			
GASKETS			
LINES			

10 9 8 7 6 5 4 3 2 1

10 9 8 7 6 5 4 3 2 1

PDR RIDS

84121204/5

