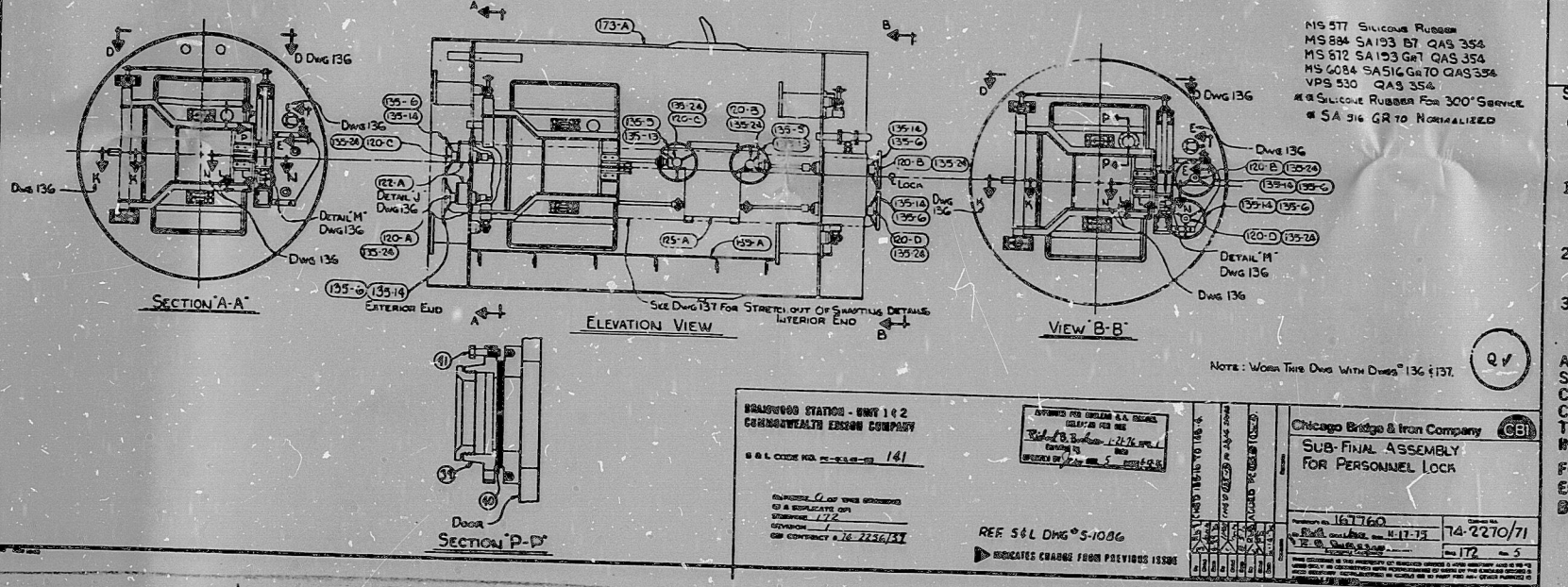


NO.	QTY.	DESCRIPTION	UNIT	QTY.	DESCRIPTION	UNIT	QTY.	DESCRIPTION	UNIT	QTY.	DESCRIPTION	UNIT	QTY.	DESCRIPTION
135-26	8	1/4" IPT PIPE PLUG			135-4	10	10 UNC STUD			172-A	2	2	2	LOCK SUB-FINAL ASSEMBLY
135-27	8	SPUR GEAR 80P 2.000 HD			135-5	4	20# HANDWHEEL 1 1/2 BORE			172-A	2	2	2	LOCK VERTICAL ASSEMBLY
135-28	4	TURNING BURST DRIVE SC-18-48			135-6	8	20# HANDWHEEL 1 1/2 BORE			172-B	4	4	4	HANDWHEEL INDICATOR R
135-29	4	1-1/2" UNF HEX HD BOLT			135-7	8	ROLLIN DOWEL PINS 3/16" DIA			172-C	4	4	4	172-C
135-30	4	FAIR TAPERED GRID STEEL FLEX COUPLING 7/16" BORE 1 1/8 BORE			135-8	16	COTTERED COUPLER LINKS FOR 1"			172-D	2	2	2	172-D
135-31	16	1-1/8" UNF HEX SELF LOCKING NUT			135-9	8	PITCH ROLLER CHAIN			172-E	2	2	2	INDICATOR DRIVE BOX ASSEMBLY
135-32	16	1-1/8" UNF HEX HD BOLTS			135-10	12	1-1/8" UNF HEX NUT LEFT HAND THD			172-F	4	4	4	TRANSFER DRIVE ASSEMBLY
135-33	16	FAIR TAPERED GRID STEEL FLEX COUPLING 7/16" BORE 1 1/8 BORE			135-11	4	1-1/8" UNF HEX NUT			172-G	4	4	4	SPLIT COUPLING ASSEMBLY
135-34	4	FAIR TAPERED GRID STEEL FLEX COUPLING 7/16" BORE 1 1/8 BORE			135-12	8	1-1/2" UNF HEX SELF LOCKING NUT			172-H	4	4	4	33" EQUALIZING VALVE ASSEMBLY
135-35	4	FAIR TAPERED GRID STEEL FLEX COUPLING 7/16" BORE 1 1/8 BORE			135-13	12	RHS FEEDER ASSY REF N0102-1M 1			172-I	4	4	4	172-I
135-36	4	FAIR TAPERED GRID STEEL FLEX COUPLING 7/16" BORE 1 1/8 BORE			135-14	12	RHS FEEDER ASSY REF N0102-1M 1			172-J	4	4	4	172-J
135-37	2	Hex Soc Set Screw			135-15	4	RHS FEEDER ASSY REF N0102-1M 1			172-K	2	2	2	FLOOR ASSEMBLY
135-38	2	O Ring 3/16" ID x 3/16" OD			135-16	4	RHS FEEDER ASSY REF N0102-1M 1			172-L	2	2	2	SHAFT & SK ASSEMBLY
172-37	4	Roller 3/16" ID x 3/16" OD			135-17	8	Hex Soc Hd Shoulder Bolt			172-M	4	4	4	SHAFT & SK ASSEMBLY
172-40	4	Gasket 6" OD x 4" ID			135-18	32	1-1/2" UNF Soc Hex Hd Bolt			172-N	2	2	2	SHAFT & SK ASSEMBLY
172-41	32	1-1/2" UNF Hex Hd Bolt			135-19	16	1-1/2" UNF Soc Hex Hd Bolt			172-O	4	4	4	SHAFT & SK ASSEMBLY
135-40	4	1-1/2" UNF Hex Hd Bolt			135-20	8	1-1/2" UNF Hex Hd Bolt			172-P	2	2	2	SHAFT & SK ASSEMBLY
136-4	1	Roller 3/16" ID x 3/16" OD			135-21	8	1-1/2" UNF Hex Hd Bolt			172-Q	2	2	2	SHAFT & SK ASSEMBLY
135-20	4	1-1/2" UNF HEAVY HEX NUT			135-22	4	1-1/2" UNF Soc Hd Shoulder Bolt			172-R	2	2	2	SHAFT & SK ASSEMBLY
					135-23	12	Key Stock			172-S	4	4	4	SHAFT & SK ASSEMBLY
					135-24	12	2# Hex Soc Flat Hd Mach Screw			172-T	4	4	4	SHAFT & SK ASSEMBLY
					135-25	48	1/2" STD WASHER			172-U	4	4	4	SHAFT & SK ASSEMBLY



Rec. 8-18-76
 REVIEWED FOR
 BRAIDWOOD
 UNITS 1 & 2
 SPEC. NO. L-_____ PROJ. NO. 4683
 4684
 COMMONWEALTH EDISON CO.
 SARGENT & LUNDY
 ENGINEERS
 1. NO EXCEPTION TAKEN,
 CONTRACTOR CAN PROCEED
 WITH FABRICATION OR
 CONSTRUCTION
 2. CONTRACTOR CAN PROCEED
 BASED ON MAKING REVISIONS
 NOTED AND RESUBMIT.
 3. REVISE AS NOTED AND
 RESUBMIT.
 HOLD FABRICATION.
 ANY ACTION SHOWN ABOVE IS
 SUBJECT TO THE TERMS OF THE
 CONTRACT, AND DOES NOT RELIEVE
 CONTRACTOR FROM HIS OBLI-
 GATIONS UNDER THE CONTRACT,
 INCLUDING DESIGN AND DETAILING.
 FOR CONTAINMENT LINER
 EQUIPMENT NO. _____
 BY R. K. TSO DATE 03 1976

TI
 APERTURE
 CARD

8412120406

16X

PDR RIDS

8412120406

