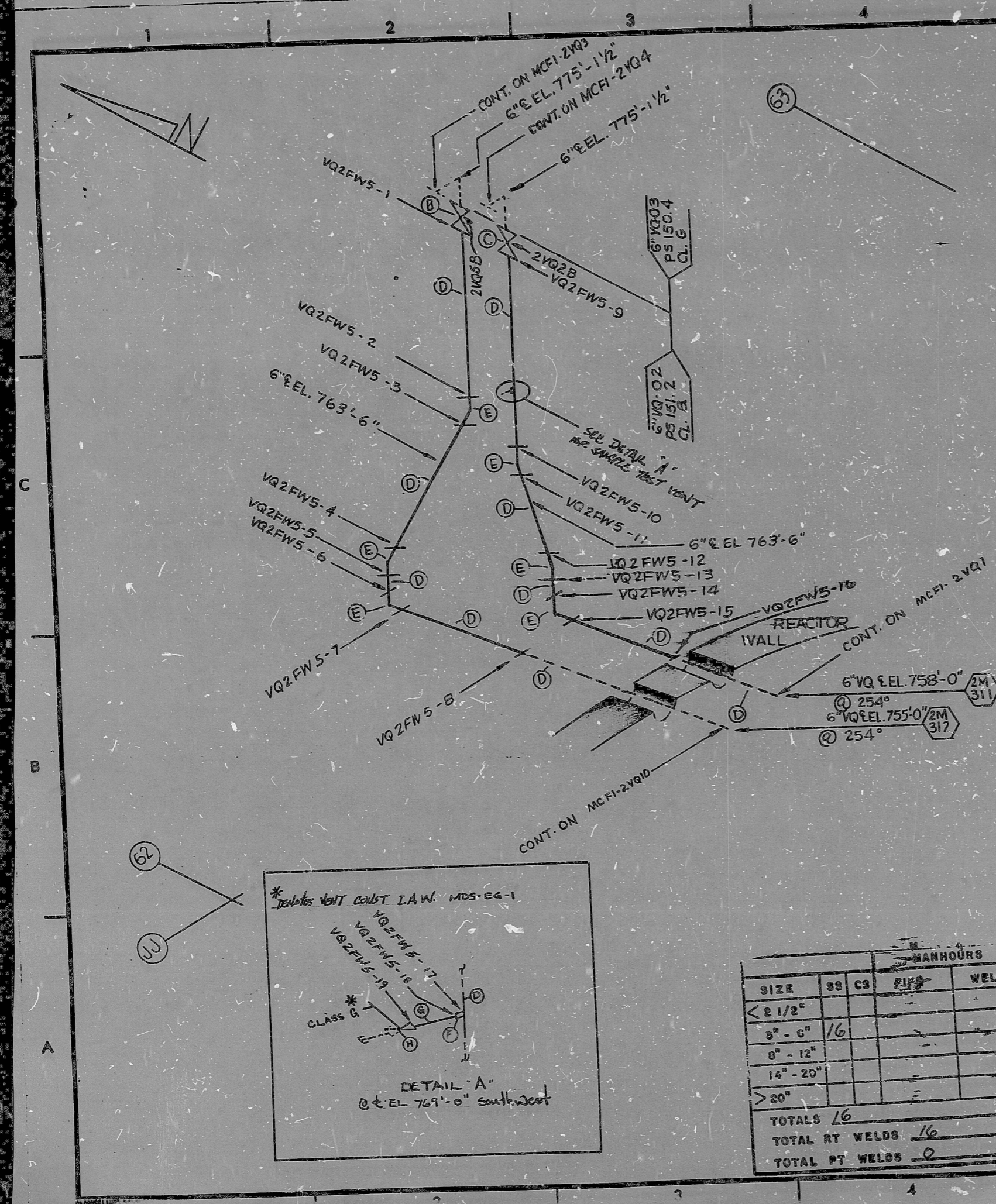


INSERVICE INSPECTION

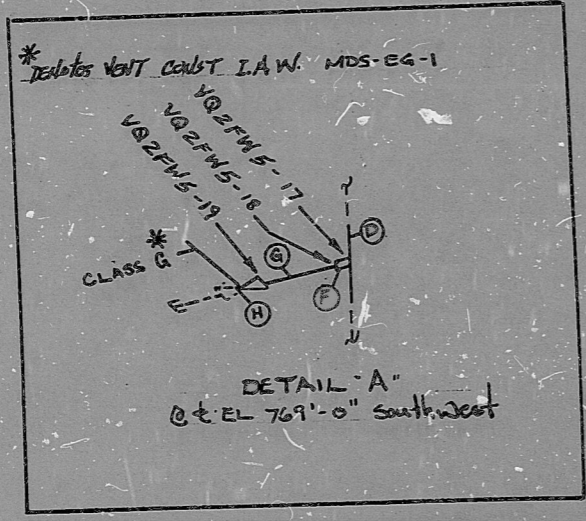


REVISIONS BLOCK			
GRID	REV. NO.	DESCRIPTION	DATE
	0	RELEASED FOR CONST.	11/10/78
	1	ADDED CONT.	1-12-78
	2	REVISED TO REVERSE POSITIONS OF VALVES	1-12-78
B-3	3	ADDED WELD VQ2FW5-16	3-16-78
	4	ADDED VENT, NOTES, WELDS 17, 18, 19, 197' F, G AND H. BC. NSM-NG. 20690	3-16-78

FOR INFORMATION ONLY

SI APERTURE CARD

ITEM	SIZE	DES.	SPEC./GRADE	SPEC./GRADE	SCH./RATE	REMARKS
(H)	3/4"	WR 2VQ 14	IN. 5B-127			SS/SW
(G)	3/4"	PIPE	SA-312/TP-304	SA-316/TP-304	40	SMLS/EPW
(F)	3/4"	HALF CPLG	SA-182/F-304	SA-403/TP-304	3000	TS/SW
(E)	6"	90° EL.		SA-403/TP-304	SCH. 10	SMLS/EPW
(D)	6"	PIPE	SA-312 TP304	SA376 TP304	SCH. 10	SMLS/EPW
(C)		2VQ 2 B	5B-219			
(B)		2VQ 5B	5B-219			



SIZE	SS		PIPE	WELD
	88	C9		
< 2 1/2"				
3" - 6"	16			
8" - 12"				
14" - 20"				
> 20"				
TOTALS	16			
TOTAL RT WELDS		16		
TOTAL PT WELDS		0		

BILL OF MATERIAL			
LAST WELD NO.	DUKE POWER COMPANY		LAST FL. NO.
19	McGUIRE NUCLEAR STATION		NA
NUCLEAR SAFETY RELATED		YES <input checked="" type="checkbox"/> NO <input type="checkbox"/>	BUILDING: ZONE:
			AUX: A-4
PIPE SPEC:	SYS. SYMBOL:	SEC. NO:	DRAWING NO:
151.2	VQ	02	2422-17.44-00
APPLICABLE CODE:	CLASS:	ISO. NO:	EL:
ASME III	B-1	MCFI-2VQ5	755'-0"
			REV: 4

8904030162

PDR RIDS

