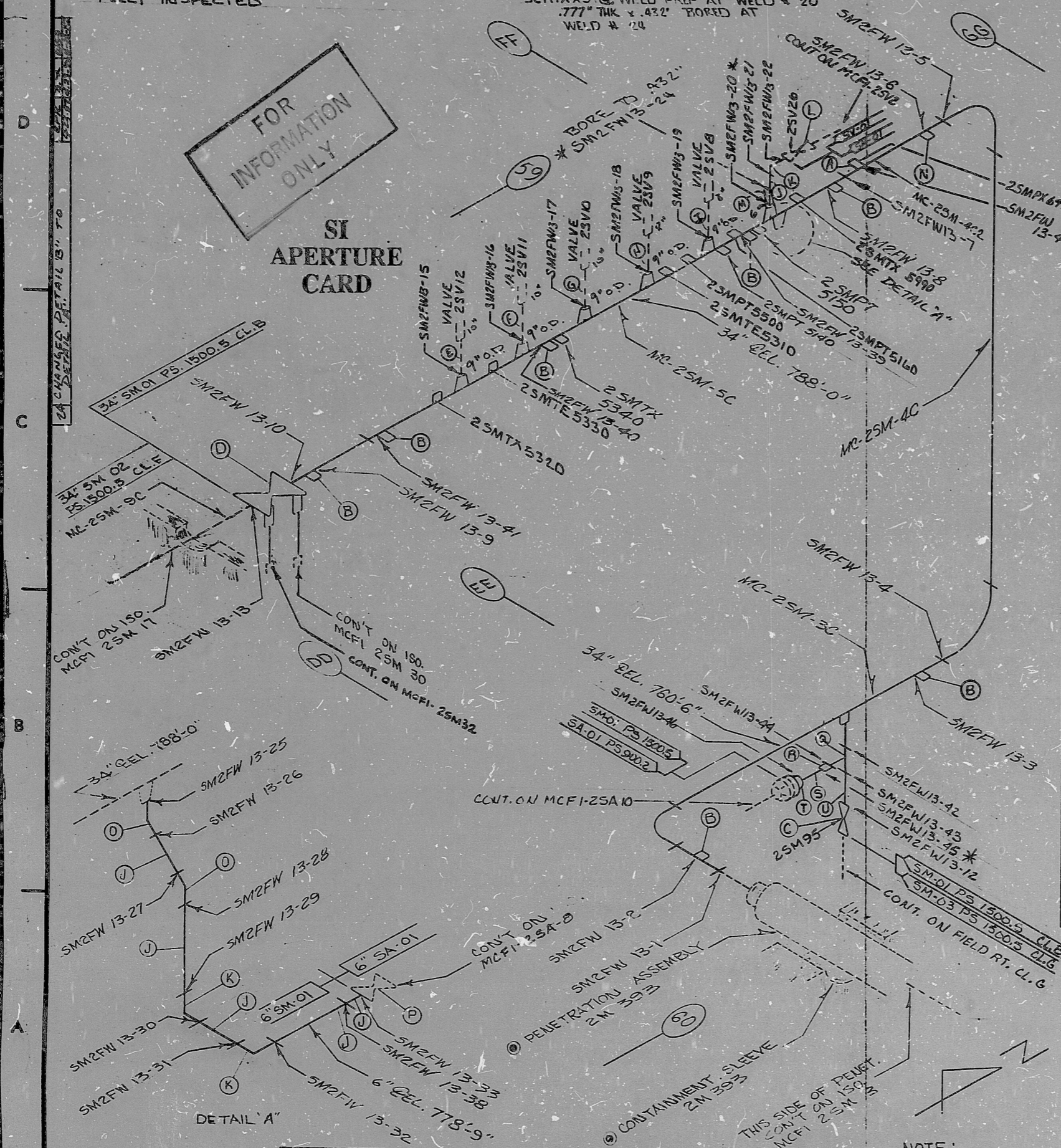


NOTE 3: ALL FILLET WELDS TO BE FULLY INSPECTED

*NOTE: MATERIAL M IS A TRANSITION PIECE SCH. XXSTG. WELD PREP AT WELD # 20 .777" THK x .432" BORED AT WELD # 24

FOR INFORMATION ONLY
SI APERTURE CARD



23	ADDED QA CONDITION I	ARK	5-11-82	ARW	3-22-82
22	ADDED STRIKES TO WELD # 15	ARK	12-4-81	ARK	1-10-82

NOTE:
I.A.W. VN#1792

INSERVICE INSPECTION

REVISIONS BLOCK

GRID	REV. NO.	DESCRIPTION	ORIG. DATE	CHG. DATE	APPROV. DATE
	0	REL. FOR CONSTR.	RFB 9-13-78	RAT 9-27-78	JG 9-27-78
	1	DELETED WELD 15	RFB 9-27-78	ARK 9-27-78	JG 9-27-78
	2	LAYOUT ADDED WELDS SM2FW13-15 TO 23 MAT. (E, F, G, H, I, J, K, L)	RFB 11-5-79	PML 11-9-79	JG 11-9-79
	3	ADDED WELD # 24 & MAT. M DELETED WELD # 23	RFB 11-13-79	PML 11-28-79	JG 11-28-79
	4	ADDED MAT "N"	RFB 4-27-79	PML 4-28-79	JG 4-27-79
D-4	5	CHANGED MAT "N" TO 1 1/2"	RFB 5-1-79	PML 5-1-79	JG 5-1-79
D-4	6	REVISED TO ADD CONT. AND PARAGRAPH CHANGE AT VALVE 2SV26.	GES 5-8-79	PML 5-10-79	JG 5-10-79
	7	REVISED MAT. B, N MATERIAL SPEC'S WELD SA-106/B	RFB 5-24-79	PML 5-24-79	JG 5-24-79
	8	CHANGE MAT. M TO XXSTG.	RFB 7-30-79	JG 7-30-79	JG 7-30-79
	9	ADDED DET. "A" & WELDS 25 THRU 33	RFB 8-13-79	JG 8-14-79	JG 8-14-79
C-1	10	ADDED WELD # 34 AT ACCESS PLUG	GES 8-30-79	JG 8-30-79	JG 8-30-79
	11	ADDED WELD 35-37 AND MAT. Q, R, S.	RFB 9-28-79	KRB 10-17-79	JG 10-17-79
	12	REVISED PER. V.N. # 21434, DOWNWARD U-8 3A, DELETE MAT. Q, R, S. & WELD 35, 37	RFB 11-17-79	JG 11-20-79	JG 11-20-79
	13	ADDED CONT.	RFB 12-5-79	JG 12-12-79	JG 12-12-79
	14	DELETE WELD # 11 & MAT. "A"	RFB 12-14-79	JG 12-14-79	JG 12-14-79
	15	ADDED WELD # 38	RFB 1-3-80	JG 1-10-80	JG 1-10-80
	16	ADD CONT. TO ISO. 2SM32	EKL 1-8-80	JG 1-15-80	JG 1-15-80
D-3	17	CHANGED 2SMTX 5540 TO 2SMTX 5940 (V.N. 29, 552)	ARK 3-20-80	JG 3-20-80	JG 3-20-80
	18	ADDED WELDS 35-41	RFB 4-18-80	JG 4-18-80	JG 4-18-80
	19	ADDED WELDS 42-46 AND MATL. Q, R, S, I, D (PER. V.N. 29, 554)	RFB 11-21-80	JG 11-21-80	JG 11-21-80
	20	ADDED NOTE 3	RFB 5-29-81	JG 5-29-81	JG 5-29-81
	23	ADDED THREE WELDS # 47 PER. V.N. 42512	JG 11-21-80	JG 11-21-80	JG 11-21-80

ITEM	SIZE	DES.	SPEC./GRADE	SPEC./GRADE	SCH./RATE	REMARKS
(T)	1"	FLANGE	SA 105		80/1500"	RF SW
(S)	1"	PIPE	SA 106/B		80	SMLS
(R)	2"x1"	RED. INS.	SA-105	SA234/WPB	3000"	FS SW
(Q)	2"	TEE	SA-105	SA234/WPB	3000"	FS SW
(P)	6"	VALVE	2SA 1	ITEM#2H-12		
(O)	6"	45° ELBOW	SA-234/WPB	NA	80	
(N)	1 1/2"	ACCESS HOLE PLUG	N/A	NA		AS SUPPLIED BY GRINNELL
(M)	6"	PIPE	SA-106/B		XXSTG.	SMLS .864" WL.
(L)	6"	VALVE	2SV26	IN 2H21		
(K)	6"	90° ELL	SA-234/WPB		80	SMLS B.W.
(J)	6"	PIPE	SA-106/B		80	SMLS
(I)	8"	VALVE	2SV8	IN 2SV8		
(H)	8"	VALVE	2SV9	IN 2SV9		
(G)	10"	VALVE	2SV10	IN 2SV10		
(F)	10"	VALVE	2SV11	IN 2SV11		
(E)	10"	VALVE	2SV12	IN 2SV12		
(D)	34"	VALVE	2 SM 3AB	ITEM#2SM3	N/A	N/A
(C)	2"	VALVE	2 SM 95	ITEM#6J-18	N/A	N/A
(B)	1/8"	ACCESS HOLE PLUG	N/A	N/A	ITEM#6J-18	AS SUPPLIED BY GRINNELL
(U)	2"	PIPE	SA-106/B		80	SMLS

BILL OF MATERIAL QA CONDITION I

LAST WELD NO. 47	DUKE POWER COMPANY McGUIRE NUCLEAR STATION	LAST FL. NO. NA
NUCLEAR SAFETY RELATED		BUILDING: ZONE: REACTOR: D-28
PIPE SPEC: 1500.5	SYS. SYMBOL: SM	SEC. NO.: 01
APPLICABLE CODE: ASME B&PV CODE SECT. III	CLASS: E	DRAWING NO.: MC 2419-13.20-00;03
		ISO. NO.: MCF1-2 SM 13
		EL: 750'-0"
		REV: 25

8904030143

PDR RIDS

