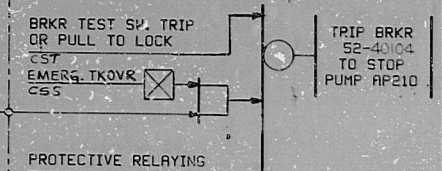


This drawing and the design it covers are the property of BECHTEL. They are merely loaned and on the borrower's express agreement that they will not be reproduced, copied, loaned, exhibited, nor used except in the limited way and private use permitted by any written consent given by the lender to the borrower.



- NOTES:**
1. FOR START LOGIC SEE SHT. 2 OF THIS DRAWING.
 2. A DUMMY CP INPUT GENERATED ON THE LOGIC CARD SHALL BE PROVIDED TO THE MOTOR MD TO PREVENT A FALSE ALARM.
 3. TWO INPUTS ARE PROVIDED FOR WIRE NUMBER P3. THE RETURN OF ONE INPUT IS CONNECTED TO WIRE NUMBER N1 TO MONITOR CIRCUIT BREAKER OPERABILITY WHEN TRIPPED. THE RETURN OF THE OTHER INPUT IS CONNECTED TO WIRE NUMBER 2 TO MONITOR CIRCUIT BREAKER OPERABILITY AND TRIP COIL CONTINUITY WHEN CLOSED. THE 'AND' GATE IDENTIFIED BY AN * IS FORMED BY THE LATTER CONNECTION AND IS NOT PART OF THE SOLID STATE LOGIC.
 4. FOR CONTROL SW LAYOUT SEE SHT. 2 OF THIS DRAWING.
 5. POWER TO THIS OUTPUT DRIVER CONTACTS IS SUPPLIED BY WIRE NO. P3.
 6. FOR CROSS REFERENCE TABLE SEE SHT 2 OF THIS DWG.
 7. RESETS FOLLOWING RESTORATION OF BUS POWER.
 8. CURRENT RATING 0.04 AMP.
 9. DELETED TO DELETED

SACs PUMP AP210 STOP
CLASS 1E CHANNEL A (NOTE 6)

NO.	DATE	REVISIONS	BY	CHKD	DESIGN	ENGR	APPR
1	4/12	DESIGN FREEZE ISSUE	JF	DP	RD	ME	
2	7/2/81	REVISED BAILEY INTERFACE AND AS NOTED	JF	CL	CL	ME	
3	9/17/79	INC. DCN #1	JF	CL	CL	ME	
4	1/1/79	REVISED AS NOTED	JF	CL	CL	ME	
5	3-16-77	ISSUED FOR CONSTRUCTION	JF	CL	CL	ME	

BECHTEL
SAN FRANCISCO

PHSIC SERVICE ELECTRIC AND GAS COMPANY
HOPE CREEK GENERATING STATION

LOGIC DIAGRAM
SAFETY AUXILIARIES COOLING
SACs PUMPS AP210 & CP210 STOP

JOB No.	DRAWING No.	REV.
10855	J-11-0 SHT. 3	4 Q

S/U-EG

RIDS

8307270354

