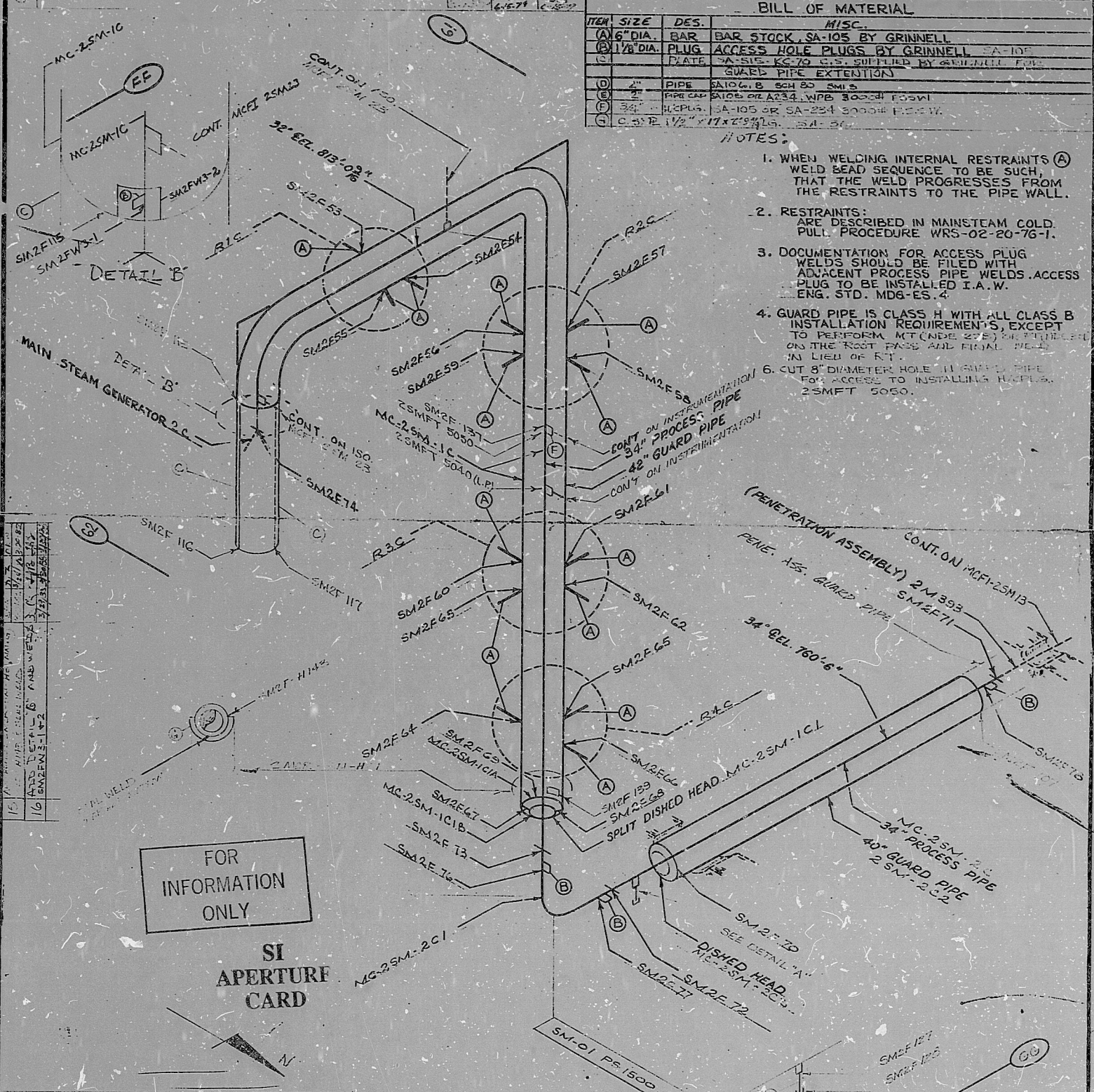


| | | | | | | | | |
|-----|---|-------|-------------|---|---|------|---------|----------|
| 1 | ADD SM2F 127, 128 AND MATERIAL 50 (E) | PKL | 4/7 | 130. NO: MCFI 25M 3 | REV. 1/6 | | | |
| 3 | ADDED WELDS SM2F 105, SM2F 115, SM2F 116, SM2F 117 ALSO MATERIAL B PERE ASS. GUARD PIPE | RFB | 10-11-78 | DUKE PIPING CLASS: GUARD PIPE CLASS SPECIAL | BUILDING: REACTOR | | | |
| 2 | ADD MC-25M-2C2 AT DISHD HEAD | DDI | 12-27-77 | SYSTEM SYMBOL: SM - MAIN STEAM | ZONE R26 | | | |
| 1 | REVISED TO DELETE NOTE NO. 5 (REISSUED BECAUSE ORIGINAL RELEASE WAS LOST) | PKL | 1-19-77 | PIPING SPEC: SM 01, 01A PS. 1500.5 & 6 | LAST WELD# 2 | | | |
| 0 | RELEASE FOR CONSTRUCTION | ORIG. | CHKD. | APPR. | DRAWING NO.: MC 2419-13.29-00, 01 FL-EL-756-0 | | | |
| NO. | REVISION | GA | CONDITION I | DATE | DATE | DATE | PROJECT | MC GUIRE |

| ITEM | SIZE | DES. | MISC. |
|------|-------------|----------|---|
| (A) | 6" DIA. | BAR | BAR STOCK SA-105 BY GRINNELL |
| (B) | 1 1/2" DIA. | PLUG | ACCESS HOLE PLUGS BY GRINNELL SA-105 |
| (C) | | PLATE | SA-SIS-KC-70 C.S. SUPPLIED BY GRINNELL FOR GUARD PIPE EXTENSION |
| (D) | 4" | PIPE | SA106.B SCH 80 SM15 |
| (E) | 2" | PIPE CAP | SA106 OR A234 WPB 3000# FOSW |
| (F) | 3/4" | WELDED | SA-105 OR SA-234 3000# FOSW |
| (G) | 6.5" E 1/2" | PLATE | SA-105 SA-106 |

- NOTES:
- WHEN WELDING INTERNAL RESTRAINTS (A) WELD BEAD SEQUENCE TO BE SUCH THAT THE WELD PROGRESSES FROM THE RESTRAINTS TO THE PIPE WALL.
 - RESTRAINTS ARE DESCRIBED IN MAINSTEAM COLD PULL PROCEDURE WRS-02-20-76-1.
 - DOCUMENTATION FOR ACCESS PLUG WELDS SHOULD BE FILED WITH ADJACENT PROCESS PIPE WELDS. ACCESS PLUG TO BE INSTALLED I.A.W. ENG. STD. MDG-ES-2.
 - GUARD PIPE IS CLASS H WITH ALL CLASS B INSTALLATION REQUIREMENTS, EXCEPT TO PERFORM MT (NDE 27E) PERMITTED ON THE ROOT FACE AND FINAL BEAD IN LIE OF RT.
 - CUT 8" DIAMETER HOLE IN SPLIT PIPE FOR ACCESS TO INSTALLING HOLE 25MFT 5050.



FOR INFORMATION ONLY
SI APERTURE CARD

| | | | | | |
|---|---|-----|----------|---|-------------------|
| 1 | ADDED CONT. AND CLASS B SPECIAL IN TITLE BLOCK | PKL | 4/7 | 130. NO: MCFI 25M 3 | REV. 1/6 |
| 2 | ADDED WELDS SM2F 105, SM2F 115, SM2F 116, SM2F 117 ALSO MATERIAL B PERE ASS. GUARD PIPE | RFB | 10-11-78 | DUKE PIPING CLASS: GUARD PIPE CLASS SPECIAL | BUILDING: REACTOR |
| 3 | ADDED WELDS SM2F 127, 128 AND MATERIAL 50 (E) | PKL | 4/7 | 130. NO: MCFI 25M 3 | REV. 1/6 |
| 4 | ADDED WELDS SM2F 105, SM2F 115, SM2F 116, SM2F 117 ALSO MATERIAL B PERE ASS. GUARD PIPE | RFB | 10-11-78 | DUKE PIPING CLASS: GUARD PIPE CLASS SPECIAL | BUILDING: REACTOR |
| 5 | ADDED WELDS SM2F 127, 128 AND MATERIAL 50 (E) | PKL | 4/7 | 130. NO: MCFI 25M 3 | REV. 1/6 |

8904030118

PDR RIDS

