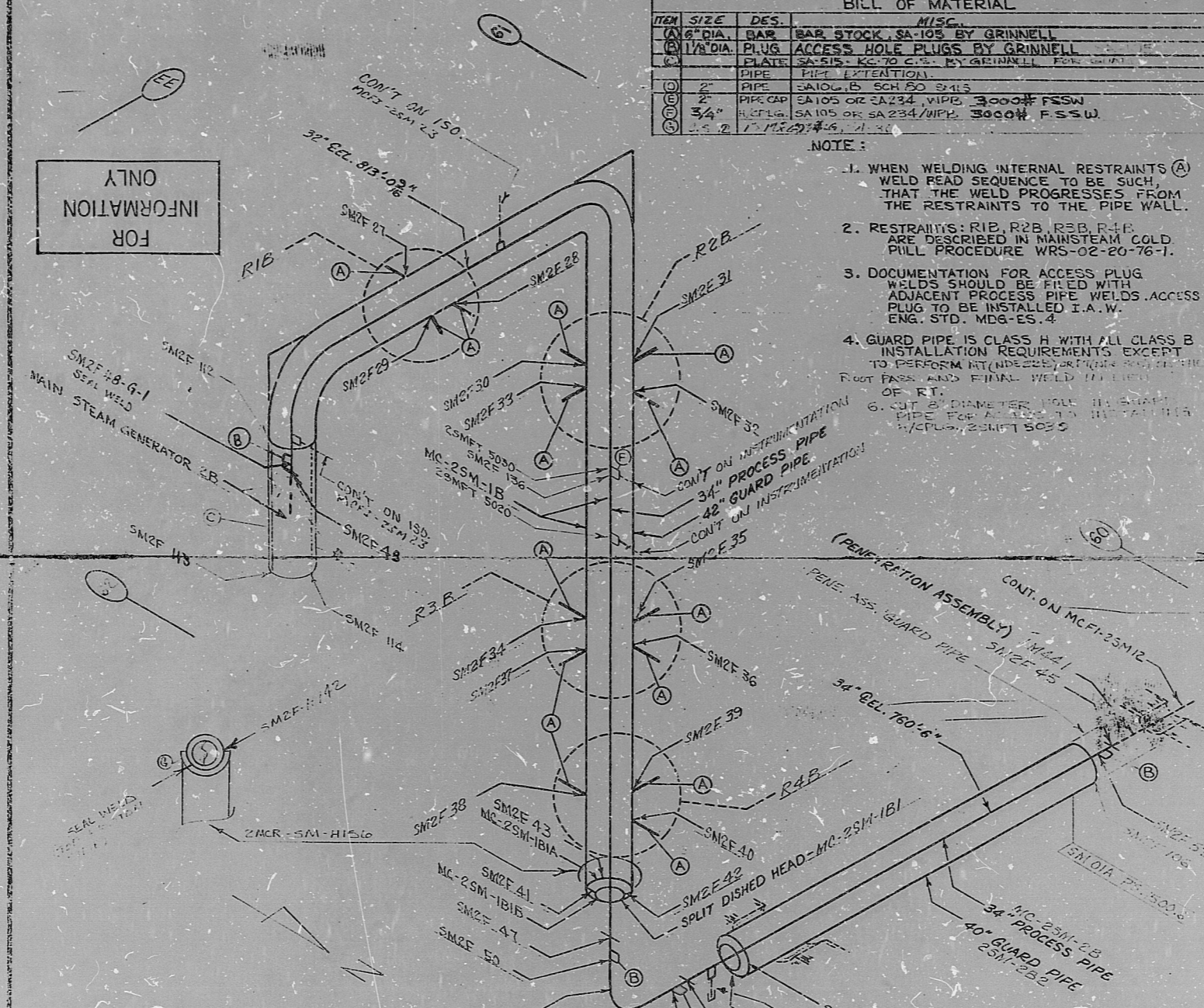


INSERVICE INSPECTION

4	CHANGED MAT.(E) TO 3000*	REK	HAW	7-15-77	ISQ NO: MCFI-2SM-2	REV. 16
3	ADD SMRF 129, 130 MATERIALS (E) AND CHANGE PENETRATION # (VN 1792)	REK	HAW	7-15-77	DUKE PIPING CLASS (GUARD PIPE) B SPECIAL	BUILDING: REACTOR
2	ADDED WELDS 106, 112, 113, 12 ALSO MAT (C) 2 GUARD PIPE FOR ASS. (REAL)	REK	HAW	7-15-77	SYSTEM SYMBOL: SM - MAIN STEAM	ZONE R26
1	DELETED NOTE #3	REK	HAW	7-15-77	PIPING SPEC: SM 01, 01A PS. 1500.5 4.6	
0	RELEASE FOR CONSTRUCTION	REK	HAW	7-15-77	DRAWING NO: MC 2419-13.20-0C, 01	FL. EL. 750' 0"
NO.	REVISION	QA CONDITION	ORIG. CHKD.	APPR.	DATE	DATE
					PROJECT	MC GUIRE

ITEM	SIZE	DES.	MISC.
(A)	6" DIA.	BAR	BAR STOCK SA-105 BY GRINNELL
(B)	1/4" DIA.	PLUG	ACCESS HOLE PLUGS BY GRINNELL
(C)		PLATE	SA-515, KC-70 C.S. BY GRINNELL
(D)	2"	PIPE	SA-105 OR SA-234
(E)	2"	PIPE CAP	SA-105 OR SA-234 W/PT. 3000# F.S.S.W.
(F)	3/4"	FL. PLG.	SA-105 OR SA-234 W/PT. 3000# F.S.S.W.
(G)	1.5" DIA.	PIPE	SA-105 OR SA-234 W/PT. 3000# F.S.S.W.

- NOTE:
1. WHEN WELDING INTERNAL RESTRAINTS (A) WELD READ SEQUENCE TO BE SUCH THAT THE WELD PROGRESSES FROM THE RESTRAINTS TO THE PIPE WALL.
  2. RESTRAINTS: R1B, R2B, R3B, R4B ARE DESCRIBED IN MAINSTEAM COLD PULL PROCEDURE WRS-02-20-76-1.
  3. DOCUMENTATION FOR ACCESS PLUG WELDS SHOULD BE FILED WITH ADJACENT PROCESS PIPE WELDS. ACCESS PLUG TO BE INSTALLED I.A.W. ENG. STD. MDG-ES.4
  4. GUARD PIPE IS CLASS H WITH ALL CLASS B INSTALLATION REQUIREMENTS EXCEPT TO PERFORM HT (NDE 222) OR FINISH ROOT PASS AND FINAL WELD OF THE OF R.T.
  5. 6" DIA. HOLE IN GUARD PIPE FOR ACCESS TO INTERNAL WELDS. W/PLUG, SMRF 5035



16	ADDED MAT. B AND SEAL WELD	SMRF 129, 130	REK	HAW	7-15-77
15	ADDED WELDS 106, 112, 113, 12	SMRF 106, 112, 113, 12	REK	HAW	7-15-77
14	DELETED SMRF 141 FROM 200-NAMC-DATE	SMRF 141	REK	HAW	7-15-77
13	REF. CLASS B SPECIAL IN TITLE BLOCK		REK	HAW	7-15-77
12	ADDED WELD 141 FOR ONE MINORATE	SMRF 141	REK	HAW	7-15-77
11	TO ALL SMRF 5030 & SMRF 5030 ARE WELDED	SMRF 5030	REK	HAW	7-15-77
10	ADDED WELD 141 FOR ONE MINORATE	SMRF 141	REK	HAW	7-15-77
9	ADDED WELD 141 FOR ONE MINORATE	SMRF 141	REK	HAW	7-15-77
8	ADDED WELD 141 FOR ONE MINORATE	SMRF 141	REK	HAW	7-15-77
7	ADDED WELD 141 FOR ONE MINORATE	SMRF 141	REK	HAW	7-15-77
6	ADDED WELD 141 FOR ONE MINORATE	SMRF 141	REK	HAW	7-15-77
5	REMOVED NOTE #4.		REK	HAW	7-15-77

FOR INFORMATION ONLY

SI APERTURE CARD



8904030109

PDR RIDS

