

INSERVICE INSPECTION

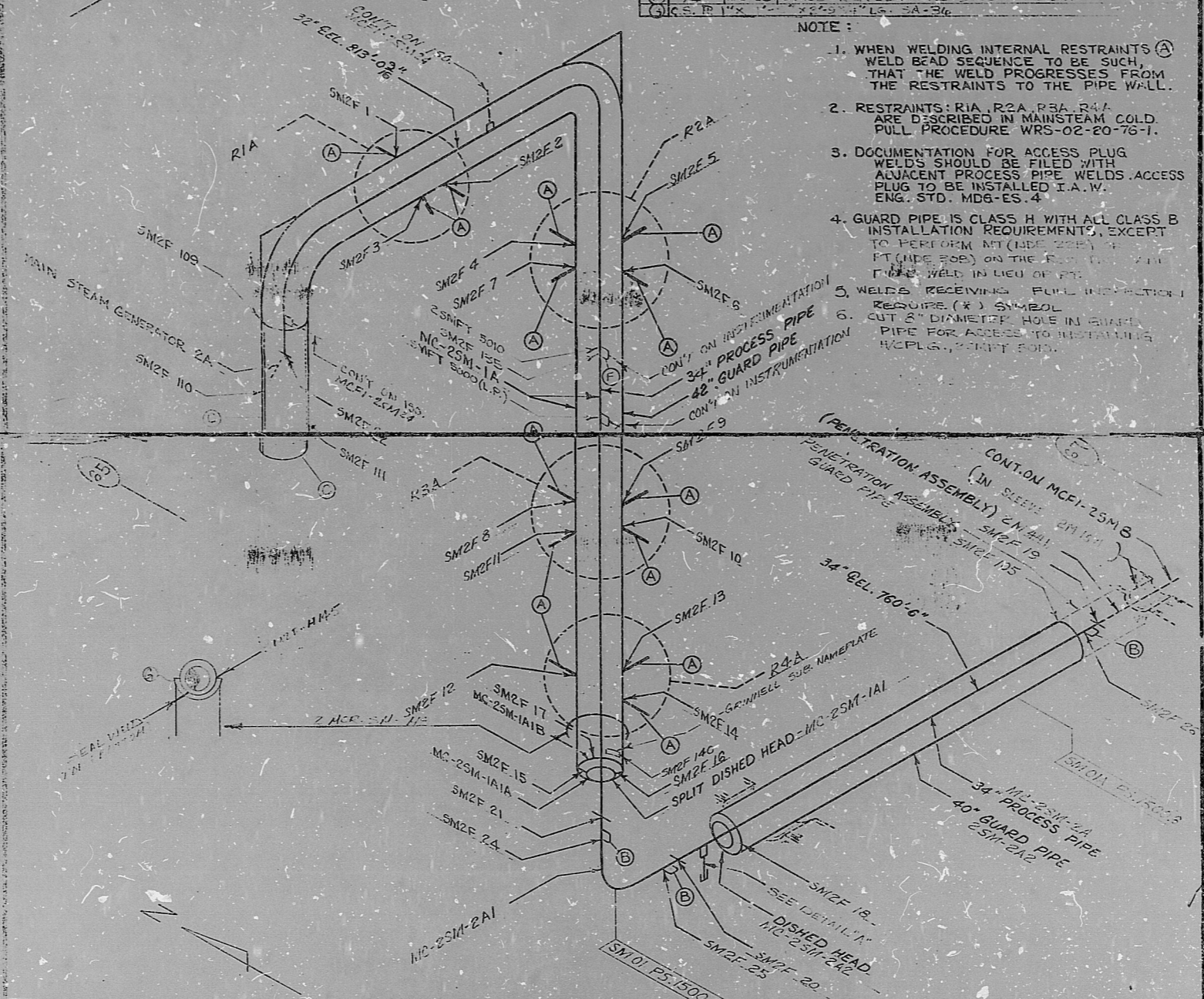
4	CHANGED MAT (E) TO 3000#	EKK	HAW	10-26-78	10-26-78	10-26-78	ISO. NO: MCFI 2SM 1	REV. 17
3	ADD SMZF 131, 132 AND MATERIALS (D) (E)	ETL	57	10-26-78	10-26-78	10-26-78	DUKE PIPING CLASS: GUARD PIPE "B SPECIAL" ASME SECTION II CL. B	BUILDING: REACTOR
2	ADDED WELD 105, 109, 110, 111	ETL	57	10-26-78	10-26-78	10-26-78	SYSTEM SYMBOL: SM - MAIN STEAM	ZONE P.26
1	RELEASE FOR CONSTRUCTION	ETL	57	10-26-78	10-26-78	10-26-78	PIPING SPEC: SM 01, 01A PS. 1500.5 4.6	
NO.	REVISION	QA	CONDITION	DATE	DATE	DATE	DRAWING NO.: MC 1625-1 MC 2419-13.20-00, 01	FL. EL. 750'-0"
							PROJECT	MC GUIRE

SI APERTURE CARD

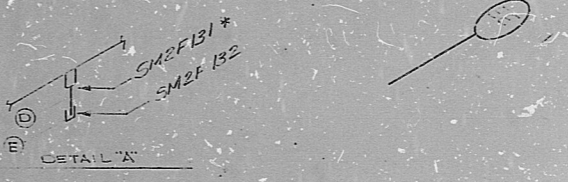
FOR INFORMATION ONLY

ITEM	SIZE	DES.	MISC.
(A)	6" DIA.	BAR	HAR STOCK SA-105 BY GRINNELL
(B)	1/2" DIA.	PLUG	ACCESS HOLE PLUG BY GRINNELL SA-105
(C)		PLATE	SA-515 1/2" TO 6" SUPPLIED BY GRINNELL FOR GUARD PIPE EXTENSION
(D)	2"	PIPE	SA105 SCH 80 SMLS
(E)	2"	PIPE CAP	SA105 OR SA224 W/PS 3000# F55W
(F)	3/4"	H/PLG	SA-105 OR SA-224 W/PIPE 3000# F55W
(G)	1/2"	H/PLG	SA-105 OR SA-224 W/PIPE 3000# F55W

- NOTE:
1. WHEN WELDING INTERNAL RESTRAINTS (A) WELD BEAD SEQUENCE TO BE SUCH THAT THE WELD PROGRESSES FROM THE RESTRAINTS TO THE PIPE WALL.
 2. RESTRAINTS: R1A, R2A, R3A, R4A ARE DESCRIBED IN MAINSTEAM COLD PULL PROCEDURE WRS-02-20-76-1.
 3. DOCUMENTATION FOR ACCESS PLUG WELDS SHOULD BE FILED WITH ADJACENT PROCESS PIPE WELDS. ACCESS PLUG TO BE INSTALLED I.A.W. ENG. STD. MDG-ES-4
 4. GUARD PIPE IS CLASS H WITH ALL CLASS B INSTALLATION REQUIREMENTS, EXCEPT TO PERFORM MT (NDE 202) 1 FT (NDE 202) ON THE R. I. I. T. WELDS IN LIEU OF P.T.
 5. WELDS RECEIVING FULL INSPECTION I REQUIRE (X) SYMBOL
 6. CUT 2" DIAMETER HOLE IN GUARD PIPE FOR ACCESS TO RESTRAINTING H/PLG. 1/2" DIA.



NO.	REVISION	DATE	BY	CHKD.	DATE
13	ADDED CONT. MCFI-2SM 8	10-26-78	EKK	ETL	10-26-78
12	ADDED 2 SPECIAL IN TITLE BLOCK	10-26-78	EKK	ETL	10-26-78
11	ADDED WELD 140 FOR SUB. MANIFOLD	10-26-78	EKK	ETL	10-26-78
10	REVISION TO ADD WELD 140 FOR SUB. MANIFOLD	10-26-78	EKK	ETL	10-26-78
9	ADDED X NOTE TO WELD 121	10-26-78	EKK	ETL	10-26-78
8	REVISION TO ADD WELD 121	10-26-78	EKK	ETL	10-26-78
7	REVISION TO ADD WELD 121	10-26-78	EKK	ETL	10-26-78
6	REVISION TO ADD WELD 121	10-26-78	EKK	ETL	10-26-78
5	REVISION TO ADD WELD 121	10-26-78	EKK	ETL	10-26-78



14 APPROVED FOR CONSTRUCTION

8904030107

PDR RIDS

