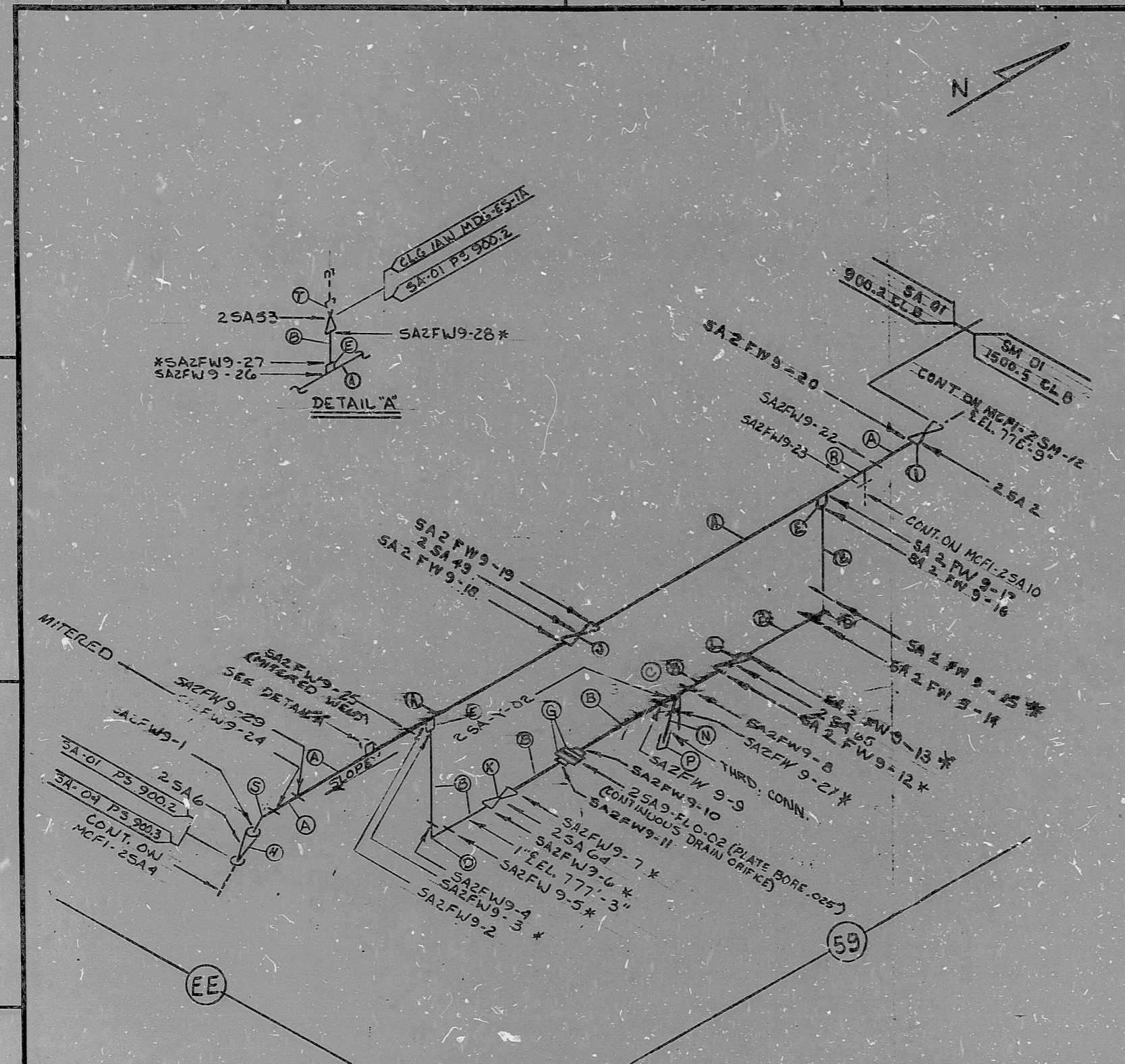


INSERVICE INSPECTION



GRID	REV. NO.	DESCRIPTION	ORIG. DATE	CHG. DATE	APPROV. DATE
	0	REL. FOR CONSTRUCTION	RK		JG
	1	REVISED PER VAL#22881 AND VAL#22973 I.D. NUMBERS Y-02 & F8 5090 ADDED	RKS	11-19-79	EDT
	2	REVISE TO SHOW 2SA-Y-02 ALL BILL OF MATERIALS	RKS	12/1/80	EDT
	3	REVISE TO ADD SS. PIPE TO ISO.	RKS	5/19/80	EDT
	4	REVISE TO ADD WELD 21 & DELETE S.S. PIPE MAT. M & MAT. F	RKS	5/15/80	EDT
	5	ADDED WELDS 28 3/4" DIA. 2" DIA. MAT. R17; REPLACED 2SA9 WITH 2SA65, 2SA10 WITH 2SA64, & 1SA FES090 WITH 1SA9-FLO-02; ADDED # TO WELDS 6 & 12; ADDED MAT. (S) PER LAYOUT DRAWING # (PER VAL#24354 & 24355)	KK	11-19-80	EDT
	6	ADDED WELD #23 (FIELD REQUESTED)	RKS	1/2/81	EDT
	7	ADDED MITERED TO WELDS # 24 & 25	RKS	1/9/81	EDT
	8	CHANGED MAT. J (NLS 2SA49AE) FROM ITEM #2H-231 TO 1MV-275 PER NSM-MG-2057	RNK	3/1/86	EDT
	9	Change valve tags # FROM 2SA 49 AB TO 2SA 49	RNK	3-16-86	EDT
	10	Change item no. for valve 2SA6 FROM 2H-13 TO 2H-247, PER NSM-MG-2-0662	RNK	5-13-86	EDT

FOR INFORMATION ONLY
SI APERTURE CARD

ITEM	SIZE	DES.	SPEC./GRADE	SCH./RATE	REMARKS
(T)		2SA-53	6J-3		
(S)	6"	45° ELL	SA234/WPB	80	SMLS EFW BW
(R)	6"	TEE	SA234/WPB	80	SMLS EFW BW
(N)	1/2"	PIPE	SA-106/B	NA	80 SMLS.
(L)		2SA-65	6J-238		
(K)		2SA-64	6J-238		
(J)		2SA-49	1MV-275		
(I)		2SA-2	2H-12		
(H)		2SA-6	2H-247		
(G)	1"	FLANGE	SA-182/F304	80/1500*	RF / SW SEE NOTE 1
(P)	1/2"	SCRD. CAP	SA-182/F304 SA-403/WP304	3000#	FS. SEE NOTE 1
(E)	1"	H/CPLG	SA-105 SA234/WPB	3000#	FS / SW
(D)	1"	90° ELL	SA-105 SA-234/WPB	3000#	FS / SW
(C)	1/2" x 1/2"	Y-STRAINER	2SA-Y-02E SA-216/WCB	80/1500#	VENDOR S.W.E. LESLIE CO.
(B)	1"	PIPE	SA-106B	80	SMLS
(A)	6"	PIPE	SA-106B	80	SMLS

FOR INFOR. ONLY	NAN HOURS	
	SS	CS
SIZE	PIPE	WELD
< 2 1/2"	2	18
2" - 6"	8	
6" - 12"		
14" - 20"		
> 20"		
TOTAL	28	
TOTAL RT WELDS	8	
TOTAL FT WELDS	20	

* FILLET WELDS RECEIVE FULL INSPECTION
NOTE 1: STAINLESS STEEL USED IN LIEU OF CS PER APP. E OF PIPE SPECS; NOTE 41

OR

BILL OF MATERIAL. G.A. COND. I

LAST WELD NO. 29 DUKE POWER COMPANY McGUIRE NUCLEAR STATION LAST FL. NO. 2SA9-FL1

NUCLEAR SAFETY RELATED YES NO BUILDING: ZONE: REACTOR D-28

PIPE SPEC: 900.2 SYS. SYMBOL: SA SEC. NO: 01 DRAWING NO: 2419-13.20-03 2419-13.20-00 EL: 778-9

APPLICABLE CODE: ASME SEC III CLASS: B ISO. NO: MCFI-2SA-9 REV: KC

8904030100

PDR RIDS

