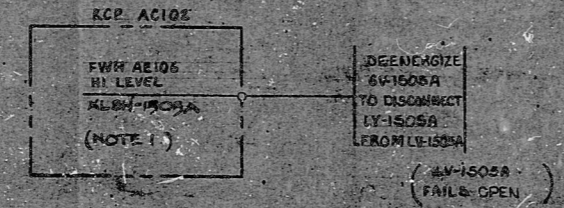
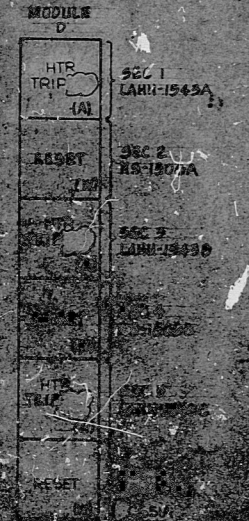


DRAIN VALVE LV-1506A

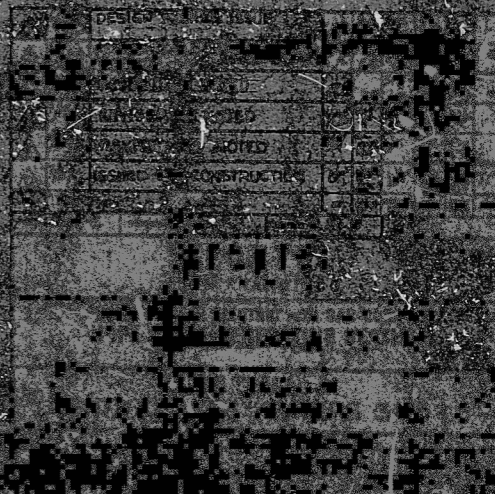
NOTES
 1. CONTACTS OPEN UPON THE CONDITION STATED.
 2. CONTACT NUMBERS ALSO APPLY TO J-02 SHT. 2.

FWH	DRAIN VALVE	SOLENOID VALVE	RESET SWITCH	HI HI LEVEL SW.		GNDS V. NOT 100% OPEN		ALARM NO.	TC	LOGIC CABINET	DRAIN VALVE CIRCUIT NO. (NOTE 2)	FUSE FWH & FUSE NO.	RCP	REAR PANEL SWITCH	
				SWH NO.	SWITCH NO.	INLET	OUTLET							MODULE	SECTION
AE 106	LV-1506A	SV-1506A	HS-1506A	AE105	XLSHH-1538A XLSHH-1539A	HV-1612A	HW-1600A	LAHH-1543A	AC65B	AC653	10	YF405 #12	AC102	D	112
BE 106	LV-1506B	SV-1506B	HS-1506B	BE105	XLSHH-1542B XLSHH-1543B	HV-1612B	HW-1600B	LAHH-1543B	BC65B	BC653	11	YF406 #12	BC102	D	116
CE 106	LV-1506C	SV-1506C	HS-1506C	CE105	XLSHH-1542C XLSHH-1543C	HV-1612C	HW-1600C	LAHH-1543C	CC65B	CC653	13	YF407 #11	CC102	D	116



FWH	LEVEL SWITCH	DRAIN VALVE	SOLENOID VALVE	RCP	POWER SUPPLY
AE106	XLSH-1505A	LV-1506A	SV-1503A	AC102	CA2802
BE106	XLSH-1505B	LV-1506B	SV-1503B	BC102	CA2802
CE106	XLSH-1505C	LV-1506C	SV-1503C	CC102	CA2802

DRAIN VALVE TRIP OPEN



RIDS

8307270331

