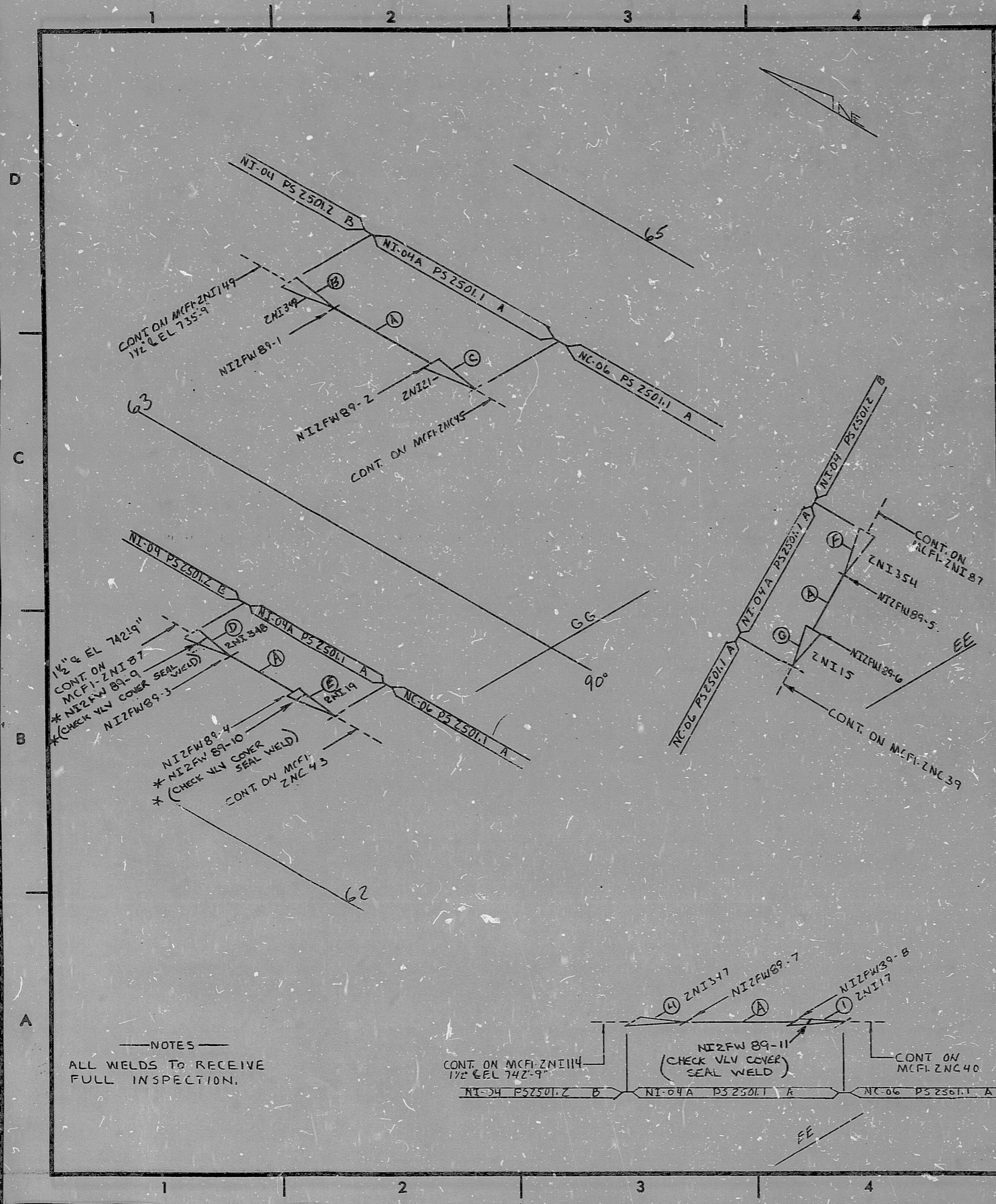


# INSERVICE INSPECTION



## REVISIONS BLOCK

GRID	REV. NO.	DESCRIPTION	CHG. DATE	CHG. DATE	APPROV. DATE
	0	REL FOR CONST	JAL	HAW	RR
U-1	1	ADD ISO CONT.	1-22-79	1-24-79	1-26-79
	2	ADDED Q.A. Condition I	RJC	RAT	RR
			3-6-79	3-9-79	3-9-79
B-1	3	ADDED WELDS 9 & 10 per WR 114681 WR 116723	RLR	EPK	DLA
			7-12-82	7-14-82	7-14-82
A-4	4	ADDED WELD 11 per WR 124041	GSC	JMC	JMC
			1-10-83	1-10-83	1-10-83
			JMC	JMC	JMC
			12-10-85	12-11-85	12-11-85

FOR INFORMATION ONLY

SI APERTURE CARD

(H)	ZNI 17	IN. 90-3				
(H)	ZNI 347	IN. 90-3				
(C)	ZNI 15	IN. 90-3				
(F)	ZNI 354	IN. 90-3				
(E)	ZNI 19	IN. 90-3				
(D)	ZNI 348	IN. 90-3				
(C)	ZNI 21	IN. 90-3				
(B)	ZNI 349	IN. 90-3				
(A)	1 1/2" PIPE	SA312 TP304	SA376 TP304	160	5M 5	

### BILL OF MATERIAL Q.A. Condition I

LAST WELD NO. 11	DUKE POWER COMPANY McGUIRE NUCLEAR STATION	LAST FL. NO. NA
<input type="checkbox"/> YES <input type="checkbox"/> NO NUCLEAR SAFETY RELATED		BUILDING: REACTOR
PIPE SPEC: Z501.1	SYS. SYMBOL: NI	SEC. NO.: 04A
APPLICABLE CODE: ASME SECTION III	CLASS: A	ISO. NO.: MCFI-ZNI 89
DRAWING NO.: MC-Z414-09.22-09	EL.: 742-9	REV.: 4

29C 88E 882

PDR RIDS

