

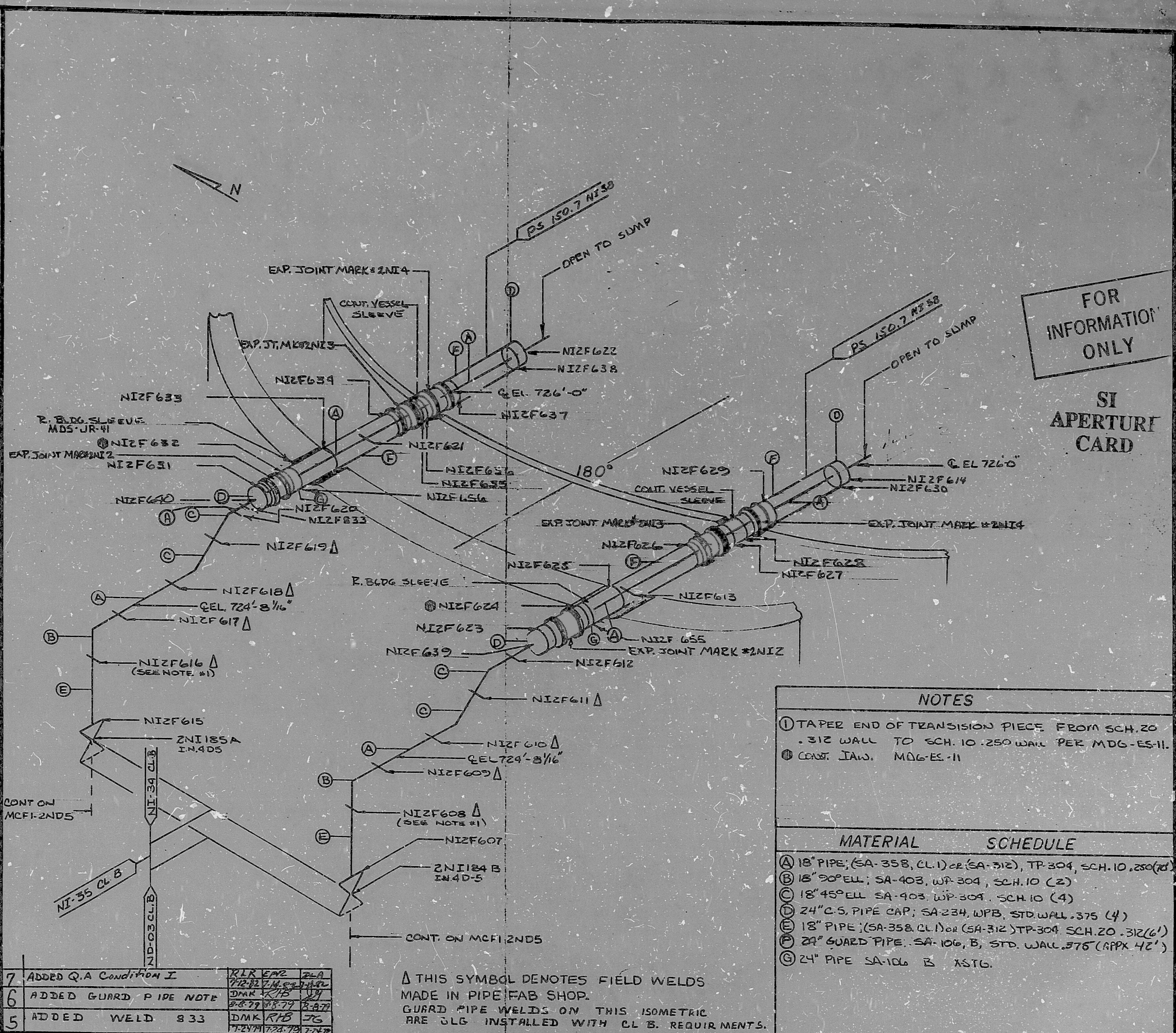
INSERVICE INSPECTION

ISO. NO.: MCFI-2NI-21  
 DUKE PIPING CLASS: ASME SEC III CL B  
 SYSTEM SYMBOL: SAFETY INJ. SYST.  
 PIPING SPEC.: NI-34 PS-1512 NI-35 PS-4012  
 DRAWING NO.: MC 2414-092000  
 PROJECT: MCGUIRE

NO.	DATE	BY	CHKD	APPR
7	12-11-77	WMA		
6	12-11-77	TAW		
5	12-11-77	PPD		
4	12-11-77	REA		
3	12-11-77	WMA		
2	12-11-77	WMA		
1	12-11-77	WMA		

REVISION Q.A. Condition I

7	ADDED Q.A. Condition I	RLR	EMR	2-0
6	ADDED GUARD PIPE NOTE	DMK	RHB	2-1
5	ADDED WELD 833	DMK	RHB	2-6



FOR INFORMATION ONLY  
 SI APERTURE CARD

NOTES	
①	TAPER END OF TRANSITION PIECE FROM SCH. 20 .312 WALL TO SCH. 10 .250 WALL PER MDG-ES-11.
②	CONST. LAW. MDG-ES-11

MATERIAL	SCHEDULE
Ⓐ	18" PIPE; (SA-358, CL.1) or (SA-312), TP-304, SCH. 10, .250 (75)
Ⓑ	18" 90° ELL; SA-403, WP-304, SCH. 10 (2)
Ⓒ	18" 45° ELL SA-403, WP-304, SCH. 10 (4)
Ⓓ	24" C.S. PIPE CAP; SA-234, WPB, STD. WALL .375 (4)
Ⓔ	18" PIPE; (SA-358, CL.1) or (SA-312) TP-304, SCH. 20, .312 (6)
Ⓕ	24" GUARD PIPE; SA-106, B, STD. WALL .375 (APPR. 42')
Ⓖ	24" PIPE SA-106 B ASFG.

△ THIS SYMBOL DENOTES FIELD WELDS MADE IN PIPE FAB SHOP.  
 GUARD PIPE WELDS ON THIS ISOMETRIC ARE 3LG INSTALLED WITH CL B. REQUIREMENTS.

DUWANG-PANEL, INC., CHARLOTTE, N.C.



8903308 3M6

PDR RIDS

