

IN SERVICE INSPECTION

REV. 1/5
 BUILDING: REACTOR ZONE R-2
 ISO. NO.: MCFI-2NI 19
 DUKE PIPING CLASS: ASME SECT. III CLASS B
 SYSTEM SYMBOL: SAFETY INJECTION
 PIPING SPEC: NI-14 PS601.2, NI-17 PS2501.1, NI-19 PS2501.2
 DRAWING NO.: MC-244-0920-00/D/02 21-0001 22-0001
 PROJECT: MCGUIRE

5	CHANGE SPECS FOR MAT	1/2	RR
6	ADDED SPEC. PORTION TO MAT A DELETED ORIGINAL FROM MAT FIG	1/2	RR
7	REMOVED TRACING WELD N12F576	1/2	RR
8	CHANGE MAT. I.D. AT WELD 576	1/2	RR
9	ADDED WELD 726 & 727 ADDED PRE-ASSEM. 2NIP 365	1/2	RR
10	ADDED PARAGRAPH CHANGE NI 19 & NI 17 AT MAT. M.; DOWNGRADED MAT. K.	1/2	RR

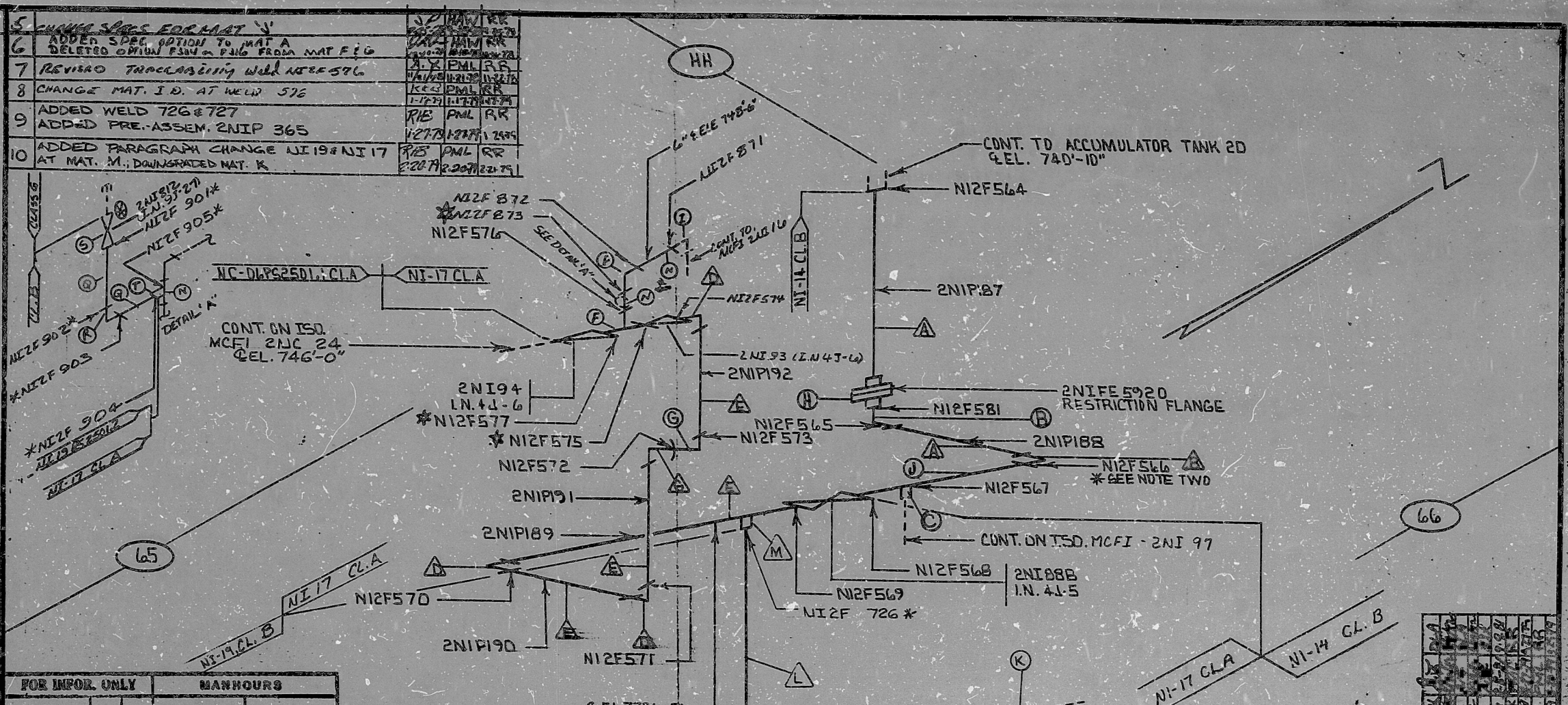
SP	RR	DATE

NO.	REVISION	Q.A. CONDITION	DATE
4	ADD MAT. TO CORRECT MATERIAL I.D. (N12F576) COLLECTED SPECS ON MATS B, C, FIG. THIS NOTES IN PARAGRAPH E		
3	ADDED FLAG AT VALVE 2NI 88B		
2	REV. TO ADD F-304 OR F-316 TO MAT F 46		
1	REL. FOR CONST. PER V.N. (5892)		
0			

FOR INFO ONLY		MANHOURS	
SIZE	CS	PIPE	WELD
< 2 1/2"	3		
3" - 6"	4		
8" - 12"	13		
14" - 20"			
TOTALS	20		
TOTAL RT WELDS	17		
TOTAL FT WELDS	3		

- (N) 6" PIPE SA-376 TP-304 SCH 160 SMLS (CL.A)
 - (M) 3/4" SPEC. WELDING BOSS SA-182/F-304 OR SA-403/WP-304 6000# F.S.S.W. (CL.A)
 - (L) 3/4" PIPE SA-376/TP-304 SCH. 160 (CL.A)
 - (K) 3/4" FULL COUPLING SA-182/F-304 OR SA-403/WP-304 6000# (CL.B)
 - (J) 10" PIPE SA-312 OR SA-376 OR SA-358 CL. 1 TP-304 SCH-160 (CL.B)
- MATERIALS**
- (A) 10" PIPE SA-312 TP-304 SCH. 40 .365" SMLS (CL.B)
 - (B) 10" 90° ELL SA-403 WP-304 SCH. 40 SMLS B.W. 1 REQ. (CL.B)
 - (C) 1" SOCKET SA-182 F-304 3000# DR SA-403 WP-304 3000# SW. 1 REQ. (CL.A)
 - (D) 10" 90° ELL SA-403 WP-316 SCH. 140 SMLS B.W. (CL.A)
 - (E) 10" PIPE SA-376 TP-316 SCH. 140 1.000" SMLS (CL.A)
 - (F) 10" X 10" X 6" TEE SA-403 WP-316 SCH. 140 X 140 X 160 SMLS B.W. 1 REQ. (CL.A)
 - (G) 10" 45° ELL SA-403 WP-316 SCH. 140 B.W. SMLS 1 REQ. (CL.A)
 - (H) 10" FLG SA-182 F-304 600# W.N. R.F. 1 REQ. (CL.B)
 - (I) 6" 90° ELL SA-403 WP-304 SCH. 160 SMLS B.W. (CL.A)

- (1) 1" 6000# HALF COUPL. F.S.S.W. (DRILLED TO .375")
- (2) VALVE 2NI 812, ITEM NO. 9J-27
- (K) 6000# 90° ELBOW F.S.S.W. SA-182 F-304 SA-403 WP-304
- (L) 1" SCH 160 PIPE SA-376 TP-304 SA-376 TP-304
- (P) 6" SCH 160, S.R. 90° ELBOW SA-403/WP-304 (CL.A)



FOR INFORMATION ONLY

SI APERTURE CARD

* DENOTES FLUSH WELDS IAW CP-891

NOTE THREE:
 * FULL INSPECTION WELD
 (B) INSTALL IAW. MDG-ES-1C

NOTE TWO:
 TAPER MATERIAL E & WELD N12F566 TO SCH. 40 IAW. MDG-ES-1C.

NOTE ONE:
 THIS SYMBOL DENOTES MATERIALS THAT ARE PARTS OF PRE-ASSEMBLED SECTIONS. THEY ARE TO BE USED BY INSPECTOR FOR FIT-UP AND HEAT NUMBER CHECK.

NO.	REVISION	DATE
15	ADDED NOTE FOR FLUSH WELDS PER CP-891	
14	ADD WELDS N12F 576 & N12F 577 TO MAT A & B	
13	REVISE CONFIS. ADD MAT. TO WELDS 576 & 577	
12	CHANGE D. MAT. H I.D. 2NIP 187	
11	ADD ISO COUNT	

MSC 334

PDR RIDS

