

INSERVICE INSPECTION

REV. 13  
 BUILDING: REACTOR  
 ZONE R-23  
 ISO. NO.: MCFI-2NI-16  
 DUKE PIPING CLASS: ASME SECT. III CLAB  
 SYSTEM SYMBOL: SAFETY INJECTION  
 PIPING SPEC.: NI-17 PS2501.1 NI-32 PS2501.2  
 DRAWING NO.: MC-2414-09.21-DD.D1 22-00.D1  
 PROJECT MCGUIRE

NO.	Q.	CONDITION	REVISION	DATE	BY	CHKD.	APPR.
4	ADDED	CONT AND EL.					
3	REV. ISO	CONTINUATION					
2	UNRECORDED						
1	ADDED	REL FDR CONT.					
0	Q.	CONDITION I					

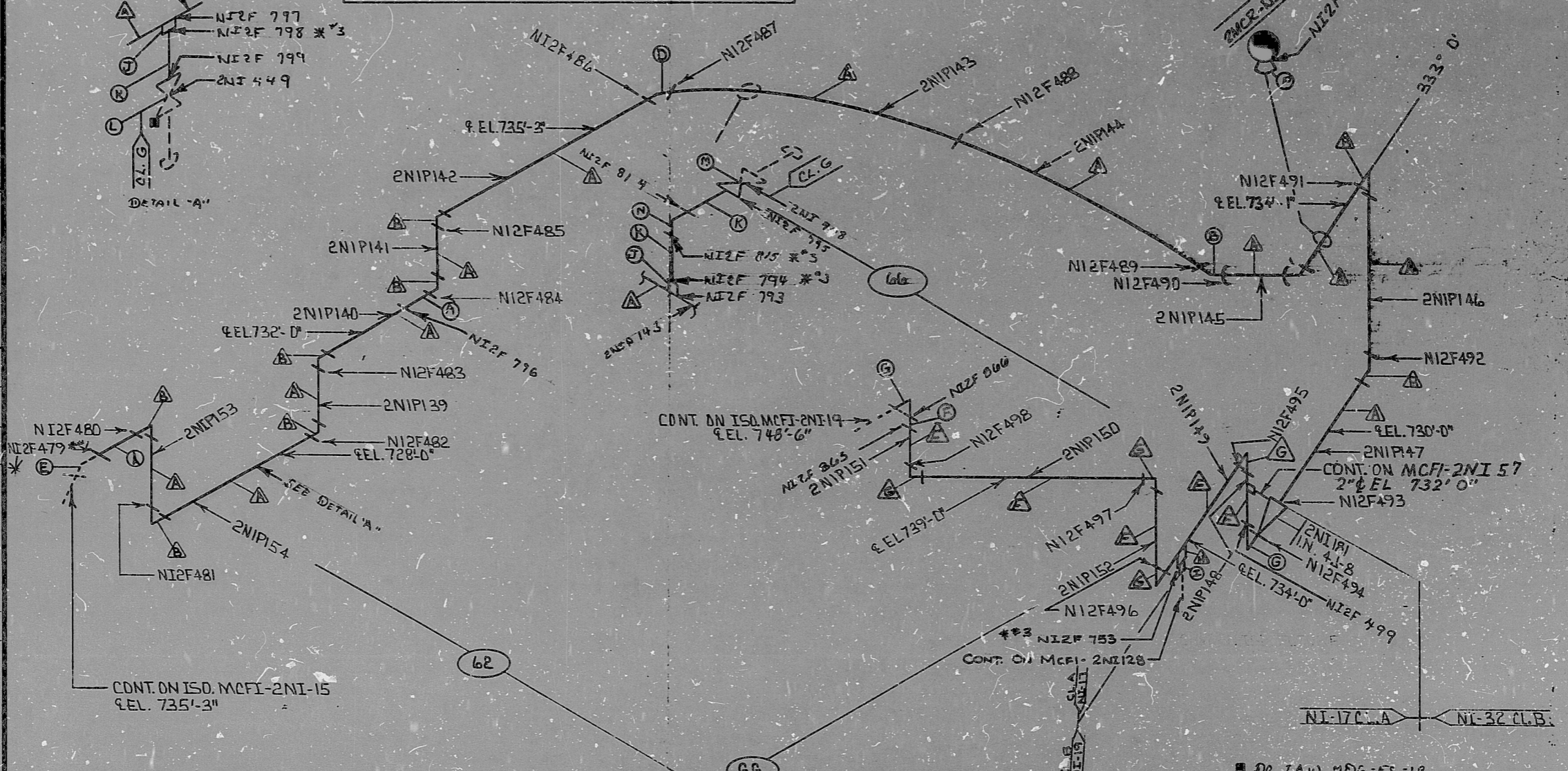
### MATERIALS

Ⓐ	6" PIPE SA-376 TP-304 SCH. 160 .719" APPROX. 0'-6" SMLS (CL.B)
Ⓑ	6" 90° ELL SA-403 WP-304 SCH. 160 B.W. SMLS 1 REQ. (CL.B)
Ⓒ	6" 31° ELL SA-403 WP-304 SCH. 160 B.W. SMLS 1 REQ.
Ⓓ	6" 24' 48' 40" ELL SA-403 WP-304 SCH. 160 B.W. SMLS (CL.A) *
Ⓔ	6" PIPE SA-376 TP-304 SCH. 160 (CL.A)
Ⓕ	6" 90° ELL SA-403 WP-304 SCH. 160 (CL.A)
Ⓖ	2" WELDING BOSS; (SA-182, F-304) OR (SA-403, WP-304) 6000*
Ⓗ	2" x 3/4" RED. INST.; (SA-182, F-304) OR (SA-403, WP-304) 6000* (DRILLED TO .375" I.D.)
Ⓘ	1" H/CPLG SA-182, F-304 OR SA-403, WP-304, 6000, F.S.S.W.
Ⓚ	1" PIPE SA-312, TP-304 OR SA-376, TP-304, 160 SMLS
Ⓛ	2NI 447 I.N. 9J-27
Ⓜ	2NI 448 I.N. 9J-27
Ⓝ	1" 90° ELL SA-182, F-304 OR SA-403, WP-304, 6000* F.S.S.W.
Ⓟ	6" PIPE SADDLE C.S. A-36

FOR INFO. ONLY		MANHOURS	
SIZE	BS	PIPE	WELD
< 2 1/2"	9		
3" - 6"	24		
6" - 12"			
14" - 20"			
> 20"			
TOTALS		33	
TOTAL RT WELDS		24	
TOTAL PT WELDS		7	

FOR INFORMATION ONLY

SI APERTURE CARD



NO.	DESCRIPTION	DATE	BY	CHKD.	APPR.
13	ADD BALLOON CHARGE TO BETWEEN WELDS 805 & 806 REVISE TO CHANGE ELEV. ADD Q.A. COND. I, AND WELDS 805 & 806 PER REV. LAYOUT HANGER: 2MCR-NI-4861. ADDED WELD N12F862	10-7-81	W.S.F.	W.S.F.	W.S.F.
12		9-8-81	W.S.F.	W.S.F.	W.S.F.
11		8-27-81	W.S.F.	W.S.F.	W.S.F.

NO.	DESCRIPTION	DATE	BY	CHKD.	APPR.
10	ADD MAT. "N" AND WELD N12F814 + 815 PER FIELD	10-8-81	W.S.F.	W.S.F.	W.S.F.
9	ADD MAT. "M" AND WELDS 798	9-9-81	W.S.F.	W.S.F.	W.S.F.
8		9-9-81	W.S.F.	W.S.F.	W.S.F.
7	ADD NOTE #1 TO WELD N12F 479	9-9-81	W.S.F.	W.S.F.	W.S.F.
6	RELOCATE WELDS 495, 496, 497, 498, AND 499 AT V.K. 2NI 181 PER FIELD	8-27-81	W.S.F.	W.S.F.	W.S.F.

NOTE ONE:  
 THIS SYMBOL DENOTES MATERIALS THAT ARE PARTS OF PRE-ASSEMBLED SECTIONS. THEY ARE TO BE USED BY INSPECTOR FOR FIT-UP AND HEAT NUMBER CHECK.



890339/7326

PDR RIDS

