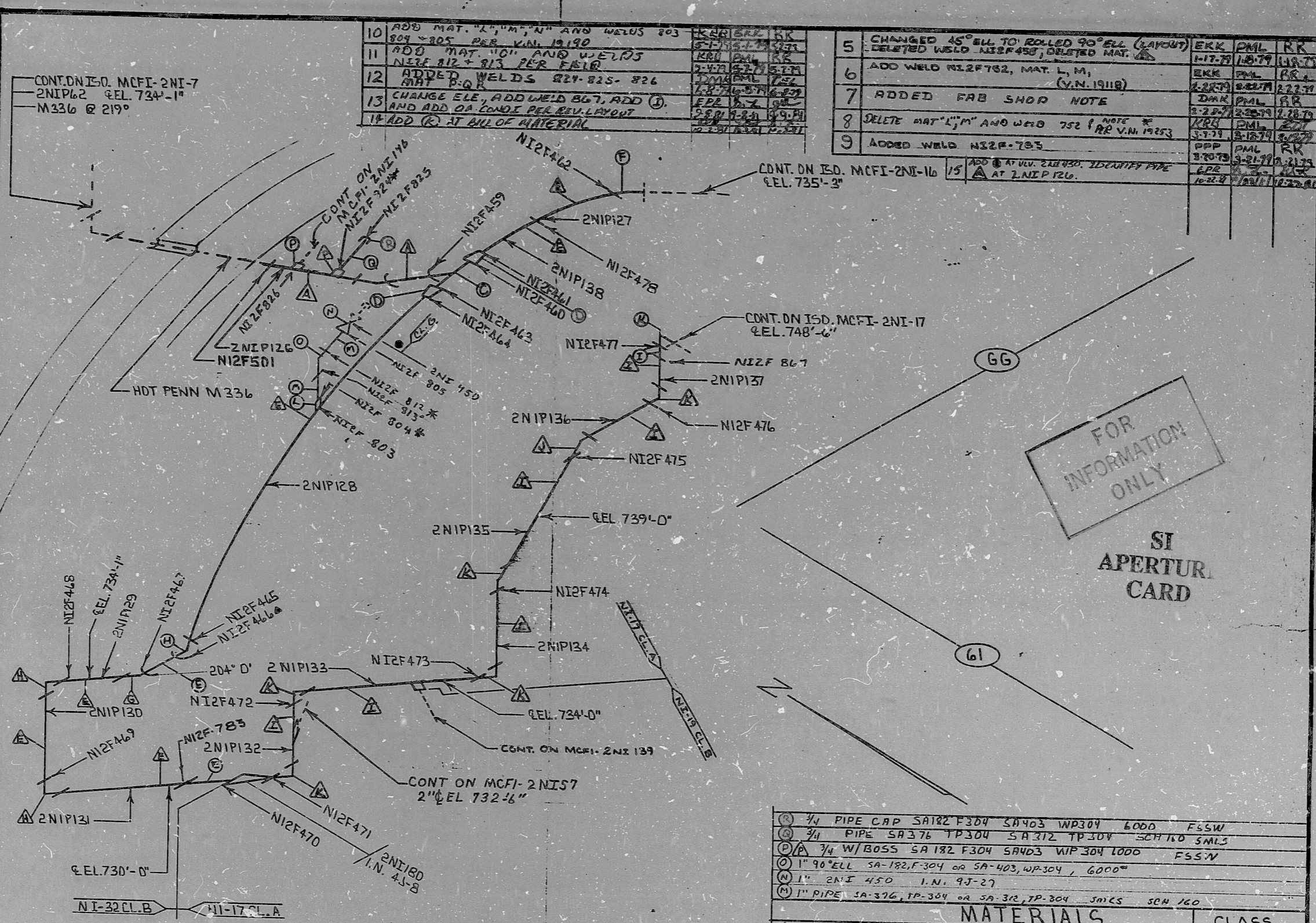


INSERVICE INSPECTION

REV. 15	ISO. NO.: MCFI-2NI-15	DUKE PIPING CLASS: ASME SECT. III CLASS B	BUILDING: REACTOR
4	ADD CONT TO MCFI-2NI57 AND EL.	SYSTEM SYMBOL: SAFETY INJECTION	ZONE R-23
3	ADDED CLASS OF MATERIALS FOR GEN-STAR; ADD NOTE TO	PIPING SPEC.: NI-17 PS2501, NI-32 PS2501.2	
2	ADD MATS FOR CLAS A TO MAT & AT WELD NI2F475	DRAWING NO.: MC-244-D9.21-00,01	22-00,01
1	REL. FOR CDNST.	PROJECT: MC GUIRE	
0			



- 10 ADD MAT. "L", "M", "N" AND WELDS 203 804 - 805 PER V.N. 19190
- 11 ADD MAT "O" AND WELDS NI2F 812 & 813 PER F410
- 12 ADDED WELDS 821-825- 826 MAT. P-Q R
- 13 CHANGE ELE, ADD WELD 867, ADD (D) AND ADD ON CONDE REL REV. LAYOUT
- 14 ADD (R) AT ALL OF MATERIAL

- | | | | | |
|----|--|-----|-----|----|
| 5 | CHANGED AS ⁹⁰ ELL TO ROLLED 90 ⁹⁰ ELL (LAYOUT) | EKK | PML | RR |
| 6 | DELETED WELD NI2F458, DELETED MAT. (L, M, N) (V.N. 19118) | EKK | PML | RR |
| 7 | ADDED FAB SHOP NOTE | EKK | PML | RR |
| 8 | DELETE MAT "L", "M" AND WELD 752 (NOTE # 1) (V.N. 19153) | EKK | PML | RR |
| 9 | ADDED WELD NI2F-783 | EKK | PML | RR |
| 15 | ADD (R) AT VLV. 218 450. IDENTIFY PIPE AT 2NIPI 120. | EKK | PML | RR |

FOR INFORMATION ONLY

SI APERTUR. CARD

DO IAW MBG-ES-18
 * THESE WELDS MADE IN PIPE FAB SHOP.
 * THESE WELDS RECEIVE FULL INSPECTION.

NOTE ONE:
 Δ THIS SYMBOL DENOTES MATERIALS THAT ARE PARTS OF PRE-ASSEMBLED SECTIONS. THEY ARE TO BE USED BY INSPECTOR FOR FIT-UP AND HEAT NUMBER CHECK.

SIZE	MANHOURS	
	83	CS
< 2 1/2"	9	
3" - 6"	19	
6" - 12"	4	
14" - 20"		
> 20"		
TOTALS	23	
TOTAL RT WELDS		
TOTAL FT WELDS	6	

NO	DESCRIPTION	CLASS
(A)	3/4" PIPE CAP SA182 F304 SA403 WP304 6000 FSSW	
(B)	3/4" PIPE SA376 TP304 SA372 TP304 SCH 160 SMLS	
(C)	3/4" W/BOSS SA 182 F304 SA403 WP 304 1000 FSSW	
(D)	1" 90° ELL SA-182 F-304 OR SA-403, WP-304, 6000"	
(E)	1" 2NI 450 I.N. 9J-27	
(F)	1" PIPE SA-376, TP-304 OR SA-312, TP-304 SMLS SCH 160	
(G)	8" PIPE SA-376 TP-304 SCH. 160 .906" SMLS	CLASS "B"
(H)	1" 1/2" PLG. SA-182 F-304 OR SA-403, WP-304 6000" FSSW	CLASS "B"
(I)	8" X 8" X 8" TEE SA-403 WP-304 SCH. 160 SMLS B.W.	CLASS "B"
(J)	8" X 6" RED. SA-403 WP-304 SCH. 160 SMLS B.W.	CLASS "B"
(K)	6" PIPE SA-376 TP-304 SCH. 160 .719" SMLS	CLASS "B"
(L)	6" 24°/48° ELL; SA-403, WP-304, SCH. 160, CUT FROM 45° SMLS B.W.	CLASS "B"
(M)	6" 45° ELL SA-403 WP-304 SCH. 160 B.W. SMLS	CLASS "B"
(N)	6" 90° ELL SA-403 WP-304 SCH. 160 B.W. SMLS	CLASS "B"
(O)	6" PIPE SA-376 TP-304 SCH-160	CLASS "A"
(P)	6" 45° ELL SA-403 WP-304 SCH-160	CLASS "A"
(Q)	6" 90° ELL SA-403 WP-304 SCH-160	CLASS "A"

8103340309

PDR RIDS

