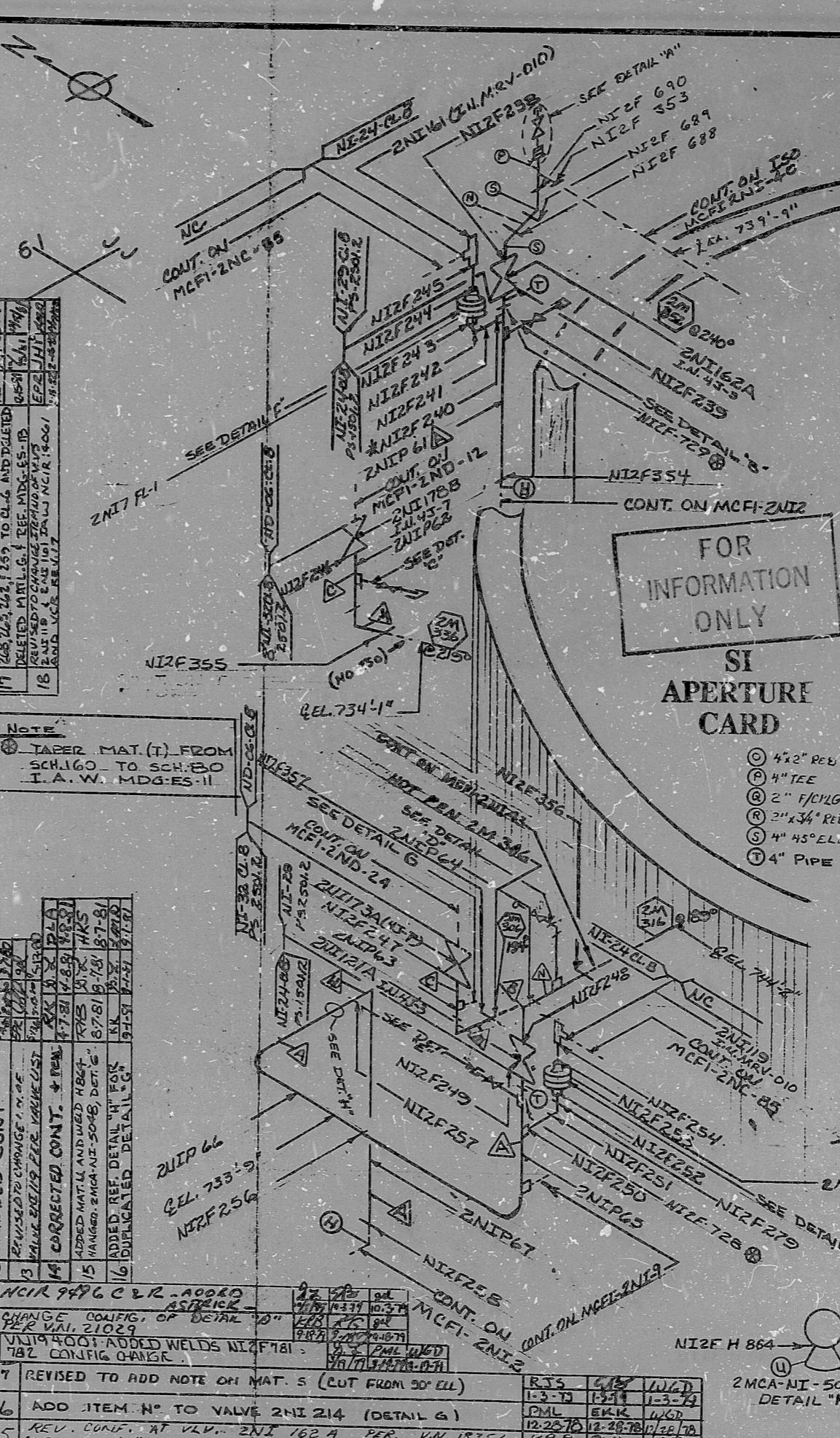
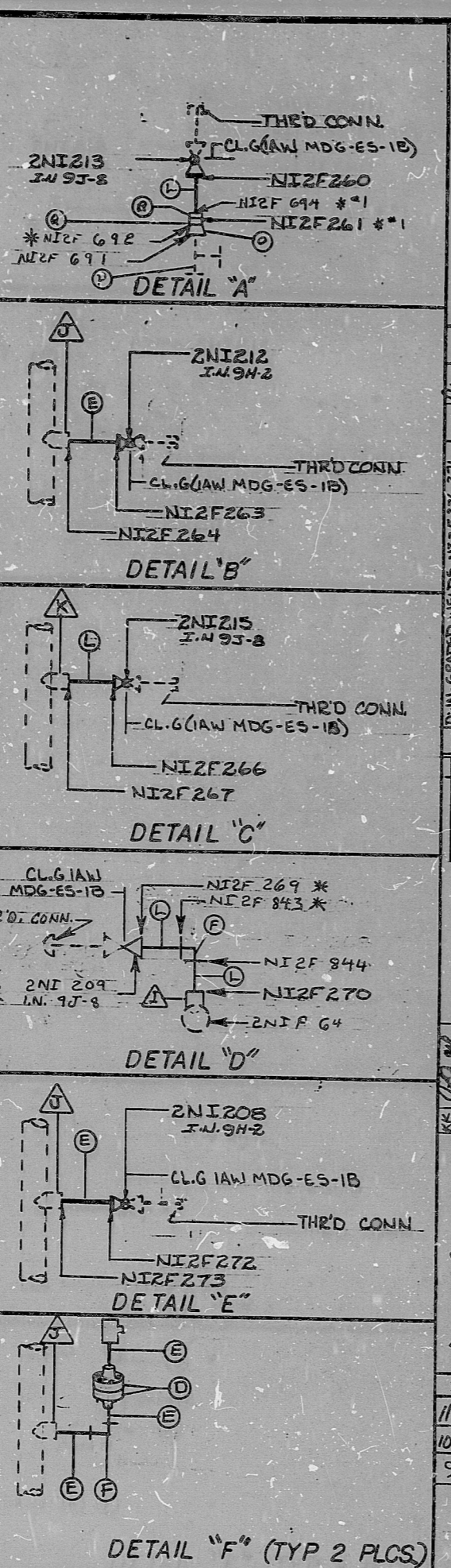


INSPECTION INSPECTION

REV. 18	ISO NO: MCFI-2NI-7	DUKE PIPING CLASS: ASME SECTION III CLASS B	BUILDING: AUXILIARY
18		SYSTEM SYMBOL: INJ SAFETY INJ SYS	NI-24, NI-29, NI-32
17		PIPING SPEC: PS-1501.2 PS-2501.2	
16		DRAWING NO: MC-241403-42-00	
15		PROJECT: MCGUIRE	
14			
13			
12			
11			
10			
9			
8			
7			
6			
5			
4			
3			
2			
1			
0			
NO			

REV. NO.	DATE	DESCRIPTION
18	12-21-78	REVISED TO ADD NOTE ON MAT. 5 (CUT FROM 30" ELL)
17	12-21-78	ADD ITEM NO. TO VALVE 2NI 214 (DETAIL G)
16	12-21-78	REV. CONF. AT VLV. 2NI 162 A PER. V.N. 18253
15	12-21-78	ADD MAT. "O" AND ADD WELDS 688 T-401 692 + 694
14	12-21-78	CHANGED CONFIG. OF DETAIL "D"
13	12-21-78	VALVE 4001: ADDED WELDS NI 2781 782 CONFIG. CHANGE
12	12-21-78	ADDED REF. DETAIL "H" FOR 2NI 162 A
11	12-21-78	ADDED MAT. AND WELDS H864 878 HKS (HANGERS ENGR. NI-5048, DET. C)
10	12-21-78	CORRECTED CONF. # 2781
9	12-21-78	VALVE WELDS FOR VALVE 4001
8	12-21-78	ADDED WELDS FOR VALVE 4001
7	12-21-78	ADDED WELDS FOR VALVE 4001
6	12-21-78	ADDED WELDS FOR VALVE 4001
5	12-21-78	ADDED WELDS FOR VALVE 4001
4	12-21-78	ADDED WELDS FOR VALVE 4001
3	12-21-78	ADDED WELDS FOR VALVE 4001
2	12-21-78	ADDED WELDS FOR VALVE 4001
1	12-21-78	ADDED WELDS FOR VALVE 4001
0	12-21-78	ADDED WELDS FOR VALVE 4001
NO	12-21-78	ADDED WELDS FOR VALVE 4001



NOTE  
 TAPER MAT. (T) FROM SCH. 160 TO SCH. 80 I.A.W. MDG-ES-11

NO.	DESCRIPTION	DATE	BY	CHECKED
1	ADDED CONT	12-21-78	JRS	WJD
2	ADDED CONT	12-21-78	JRS	WJD
3	ADDED CONT	12-21-78	JRS	WJD
4	ADDED CONT	12-21-78	JRS	WJD
5	ADDED CONT	12-21-78	JRS	WJD
6	ADDED CONT	12-21-78	JRS	WJD
7	ADDED CONT	12-21-78	JRS	WJD
8	ADDED CONT	12-21-78	JRS	WJD
9	ADDED CONT	12-21-78	JRS	WJD
10	ADDED CONT	12-21-78	JRS	WJD
11	ADDED CONT	12-21-78	JRS	WJD
12	ADDED CONT	12-21-78	JRS	WJD
13	ADDED CONT	12-21-78	JRS	WJD
14	ADDED CONT	12-21-78	JRS	WJD
15	ADDED CONT	12-21-78	JRS	WJD
16	ADDED CONT	12-21-78	JRS	WJD
17	ADDED CONT	12-21-78	JRS	WJD
18	ADDED CONT	12-21-78	JRS	WJD

### MATERIAL SCHEDULE

① 4" PIPE; SA-376; TP-304; SCH. 80
② 4" SOTELL; SA-403; WP-304; SCH. 160
③ 8" PIPE; SA-376; TP-304; SCH. 160
④ 3" S.W. FLNG.; SA-182; F-304; 6000#
⑤ 3" PIPE; SA-376; TP-304; SCH. 80
⑥ 4" SOTELL; SA-403; WP-304; SCH. 160
⑦ 4" PROTECTION SADDLE - SA-36 C.S.

### NOTES

- THIS SYMBOL  $\Delta$  DENOTES MATERIAL THAT IS PART OF PRE-ASSB. SECT. TO BE USED BY INSP. FOR FIT UP & HEAT NO. CHECK ONLY.
- WELDING BOSS TO BE INSTALLED I.A.W. MDG-ES-2+3. \* DO I.A.W. MDG-ES-16 \*\* THESE WELDS REQ. FULL INSPECTION

FOR INFORMATION ONLY  
 SI APERTURE CARD

SIZE	SS	CS	PIPE	WELD
< 2 1/2"	34			
3" - 6"	13			
6" - 12"	4			
14" - 20"				
> 20"				
TOTALS	51			
TOTAL RT WELDS		27		
TOTAL PT WELDS		34		

### DETAIL "G"

DUNCAN-PARKER, INC., CHARLOTTE 1970

82220 PCE062

PDR RIDS

