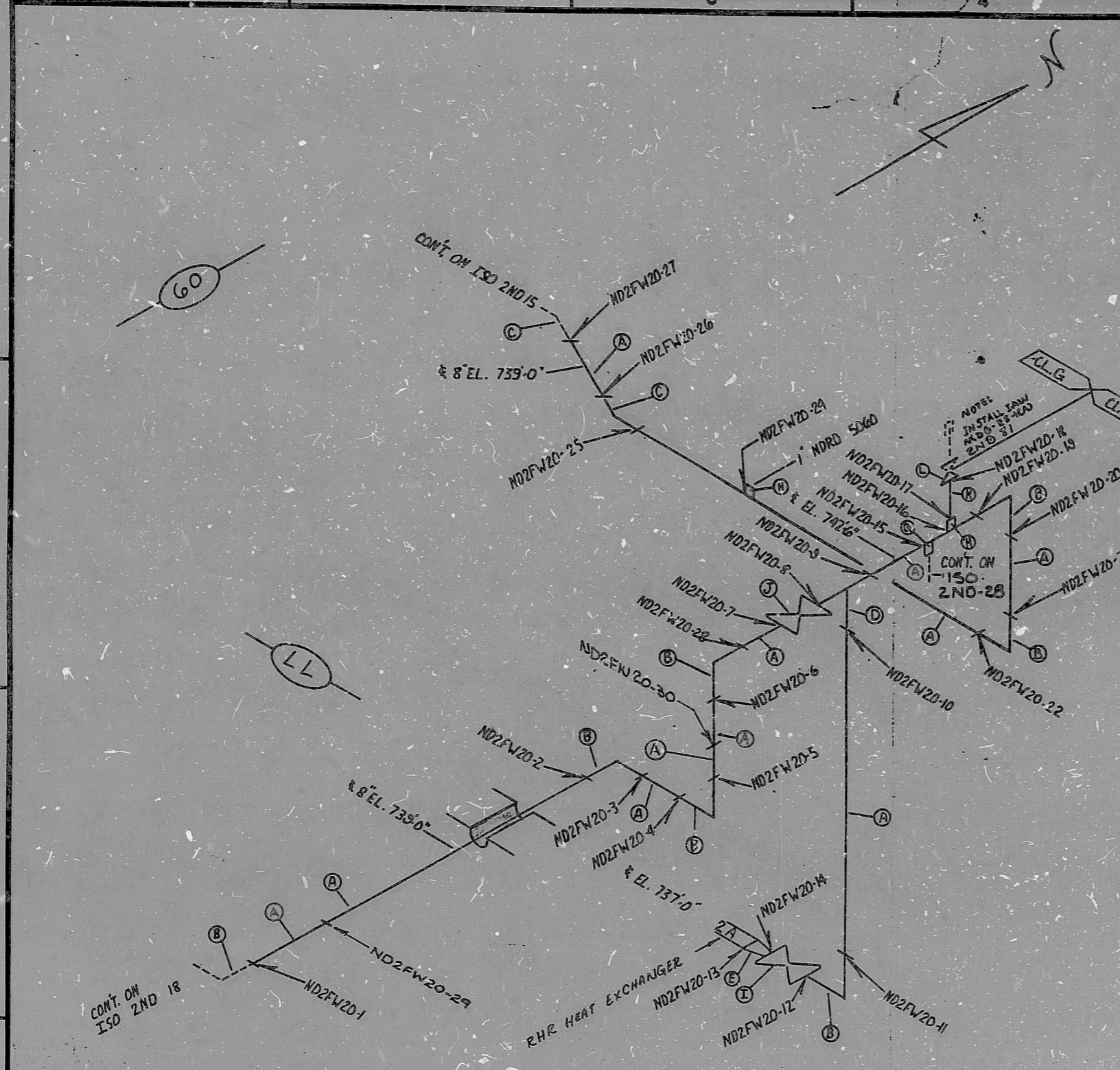


INSERVICE INSPECTION

REVISIONS BLOCK

GRID	REV. NO.	DESCRIPTION	CRD. DATE	CHKD. DATE	APPROV. DATE
	0	REL. FOR CONSTR.			
A-4 B-3	1	CHANGED SCH OF MAT. (E) 40x20 WAS 40	3-16-78	4-11-78	5-15-78
C-4	2	ADD V.L.V. 2ND 31 FOR VENT AT WELD 18 PER V.N. 15185	4-11-78	11-21-78	11-21-78
C-3	3	DELETED ND2FW20-23, MAT. (F) (M.N. 18 350)	12-11-78	12-12-78	1-17-79
D-2	4	ADD WELD ND2FW20-29	EKK	PML	AKM
	5	ADDED WELD ND2FW 20-30	1-23-79	1-23-79	2-23-79
	6	ADDED HANGER 2-MCA-ND-6119, MAT. "M" AND WELDS 31 x 32 PER V.N. 19190	RFB	PML	TKL
B-3	7	DELETED WELDS H31 & H32 & MAT "M" OF HANGER ATTACHMENT 2MCA-ND-6119	1-31-79	1-31-79	2-1-79
	8	ADDED CONT.	4-11-79	4-12-79	4-13-79
	9	REVISE TO IDENTIFY HX 2A, DELETE REFERENCE TO SEE NOTE 1	RFB	PML	HKS
A-3	10	ADDED 2MCA-ND-5015, MAT. M, AND WELDS ND2FW20-31	4-17-79	4-17-79	4-17-79
	11	DELETE 2MCA-ND-5015, MAT. M, AND WELD ND2FW20-H 31 (REV. HANGER SKETCH)	4-17-79	4-17-79	4-17-79
	12	ADDED QA Condition I, AND NOTE VENT	5-27-82	5-27-82	5-28-82



FOR INFORMATION ONLY

SI APERTURE CARD

ITEM	SIZE	DES.	SPEC./GRADE	SCH./RATE	REMARKS
(O)	1"	2ND 31	JG-36		
(L)	1"	PIPE	SA312 TP304	SA 376 TP 304	40 SMLS EFW
(K)		2ND 33	4D-15		
(J)		2ND 26	4D-3		
(I)	1"	HALF CPLG	SA 182 F304	SA 403 WP304	3000 FS SW
(H)	3/4"	HALF CPLG	SA 182 F304	SA 403 WP304	3000 FS SW
(G)					
(F)					
(E)	14x8"	CONC RED	SA 403	WP 304	40x20 SMLS.. EFW
(D)	8"	TEE	SA 403	WP 304	20 SMLS EFW
(C)	8"	45° ELL	SA 403	WP 304	20 SMLS EFW
(B)	8"	30° ELL	SA 403	WP 304	20 SMLS EFW
(A)	8"	PIPE	SA 312 TP304	SA 376 TP304	20 SMLS EFW

FOR INFOR. ONLY		MANHOURS	
SIZE	NO	PIPE	WELD
< 2 1/2"	4		
3" - 6"			
8" - 12"	23		
14" - 20"	1		
> 20"			
TOTALS	28		
TOTAL RT WELDS		24	
TOTAL PT WELDS		4	

* WELDS GET FULL INSPECTION

OR

BILL OF MATERIAL QA Condition I

LAST WELD NO. 31	DUKE POWER COMPANY MCGUIRE NUCLEAR STATION	LAST PL. NO. NA
NUCLEAR SAFETY RELATED		BUILDING: A-3
PIPE SPEC: 601.2	SYS. SYMBOL: ND	SEC. NO: 04
APPLICABLE CODE: ASME III	CLASS: B	ISO. NO: MCFI-2ND 20
DRAWING NO: 2414-04-42-01-02	EL: 733-0	REV: 12

8903300266

PDR RIDS

