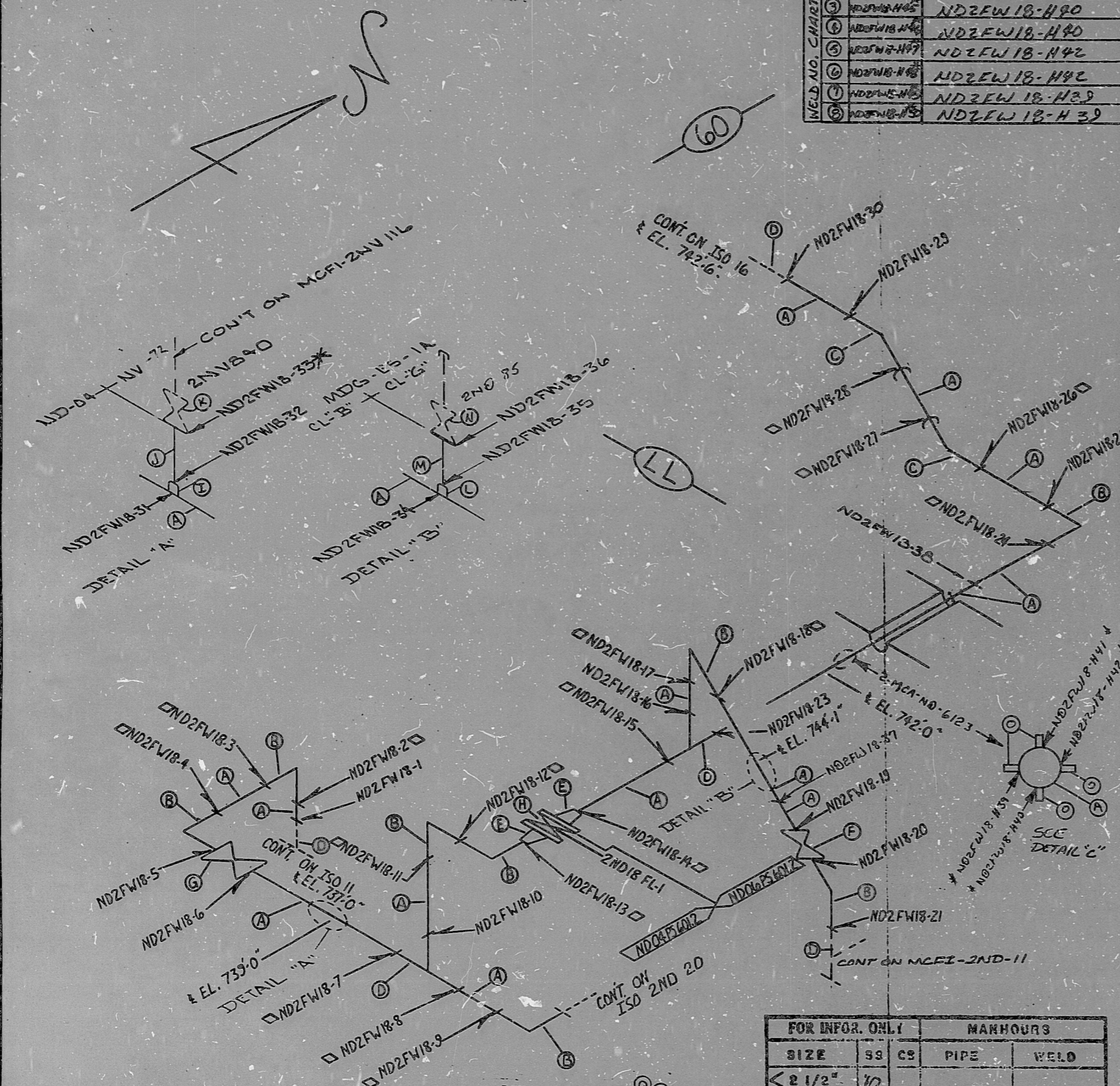


INSERVICE & INSPECTION

WELD NO.	ADJACENT TO EXISTING WELD
① ND2FW18-H91	ND2FW18-H91
② ND2FW18-H91	ND2FW18-H91
③ ND2FW18-H90	ND2FW18-H90
④ ND2FW18-H90	ND2FW18-H90
⑤ ND2FW18-H92	ND2FW18-H92
⑥ ND2FW18-H92	ND2FW18-H92
⑦ ND2FW18-H29	ND2FW18-H29
⑧ ND2FW18-H39	ND2FW18-H39

REV. NO.	DESCRIPTION	CHK. DATE	CHK. BY	APPROV. DATE	APPROV. BY
0	REL FOR CONSTR. VN 17K5	8-30-78	PAT	9-21-78	PK
1	DELETE ND2FW18-22	9-22-78	PAT	9-28-78	PK
2	ADD SYMBOL \diamond AT FIELD WELDS	10-19-78	PAT	10-27-78	PK
3	VALVE ADDED VALVE 2" 2NVB40 VENT VALVE, WELDS ND2FW18-21-36	11-15-78	PAT	11-15-78	PK
4	ADD VLV. END 85 TO VENT DETAIL "B" PER V.N.I. 18185	12-11-78	PK	12-11-78	PK
5	ADD WELD 37 BETWEEN WELDS 18 & 17	12-11-78	PK	12-11-78	PK
6	ADD WELD ND2FW18-38	12-29-78	PK	12-29-78	PK
7	ADD 3000 # TO MAT (L)	1-11-79	PK	1-11-79	PK
8	ADDED INSPECTION NOTE	3-20-79	PK	3-20-79	PK
9	ADD HANGER 2" CA-40-C123, MAT. 0" AND WELDS 39-42 PER V.N.I. 18185	4-12-79	PK	4-12-79	PK
10	REV. TO REF. SYMBOL \diamond IN NOTE	4-12-79	PK	4-12-79	PK
11	ADD CHART, DETAIL "C" & WELDS 443-450 PER REVISED HANGER 2" CA-ND-6123	12-22-81	PK	12-22-81	PK
12	ADDED NOTE FOR MAT. P	2-22-82	PK	2-22-82	PK



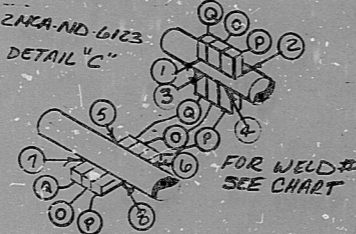
FOR INFORMATION ONLY

SI APERTURE CARD

ITEM	SIZE	DES.	SPEC./GRADE	SPEC./GRADE	SCH./RATE	REMARKS
①	1" x 1/16" x 1/4"	LUG SA-516, GR-70 CS				
②	1/2" x 1/16" x 1/4"	LUG SA-516, GR-70 CS, MAT. P WAS FABRICATED FROM 3/4" STOCK.				
③	1"	LUG SA-516, GR-70 CS				
④	1"	PIPE SA-312 TP-304			40	SMLS OR EFW
⑤	1"	H/ COUPL. SA-182 / F-304	SA-403 / WP-304		3000 #	
⑥	2"	2NVB40 IAL 2NVA459A				
⑦	2"	PIPE SA-312 / TP-304			40	SMLS OR EFW
⑧	2"	H/ COUPL. SA-182 / F-304	SA-403 / WP-304		3000 #	FW. ES.
⑨	2ND 34	2ND 34				
⑩	2ND 18	4D-15				
⑪	2ND 15 B	4D-4				
⑫	8"	WM-RF FLNG SA 182	F 304		600#	20 BORE
⑬	8"	TEE SA 403	WP 304		20	SMLS EFW
⑭	8"	45° ELL SA 403	WP 304		20	SMLS EFW
⑮	8"	90° ELL SA 403	WP 304		20	SMLS EFW
⑯	8"	PIPE SA 312-376	TP 304		20	SMLS EFW

FOR INFOR. ONLY		MANHOURS	
SIZE	SS CS	PIPE	WELD
< 2 1/2"	10		
3" - 6"			
8" - 12"	32		
14" - 24"			
> 24"			
TOTALS	42		
TOTAL RT WELDS		32	
TOTAL PT WELDS		10	

NOTE: THIS SYMBOL \diamond DENOTES FIELD WELD MADE IN FRB SHOP. *RECEIVES FULL INSPECTION



BILL OF MATERIAL QA CONDITION I

LAST WELD NO. 50

DUKE POWER COMPANY
McGUIRE NUCLEAR STATION

LAST FL. NO. 1

NUCLEAR SAFETY RELATED YES NO BUILDING: ZONE:
AUX R-3

PIPE SPEC: 601.2 SYS. SYMBOL: ND SEC. NO: 04, 06 DRAWING NO: MC 2414-04.42.01, 02 EL: 733-0" APPLICABLE CODE: ASME III CLASS: B ISO. NO: MCFI - 2ND 18 REV: 12

89033034

PDR RIDS

