

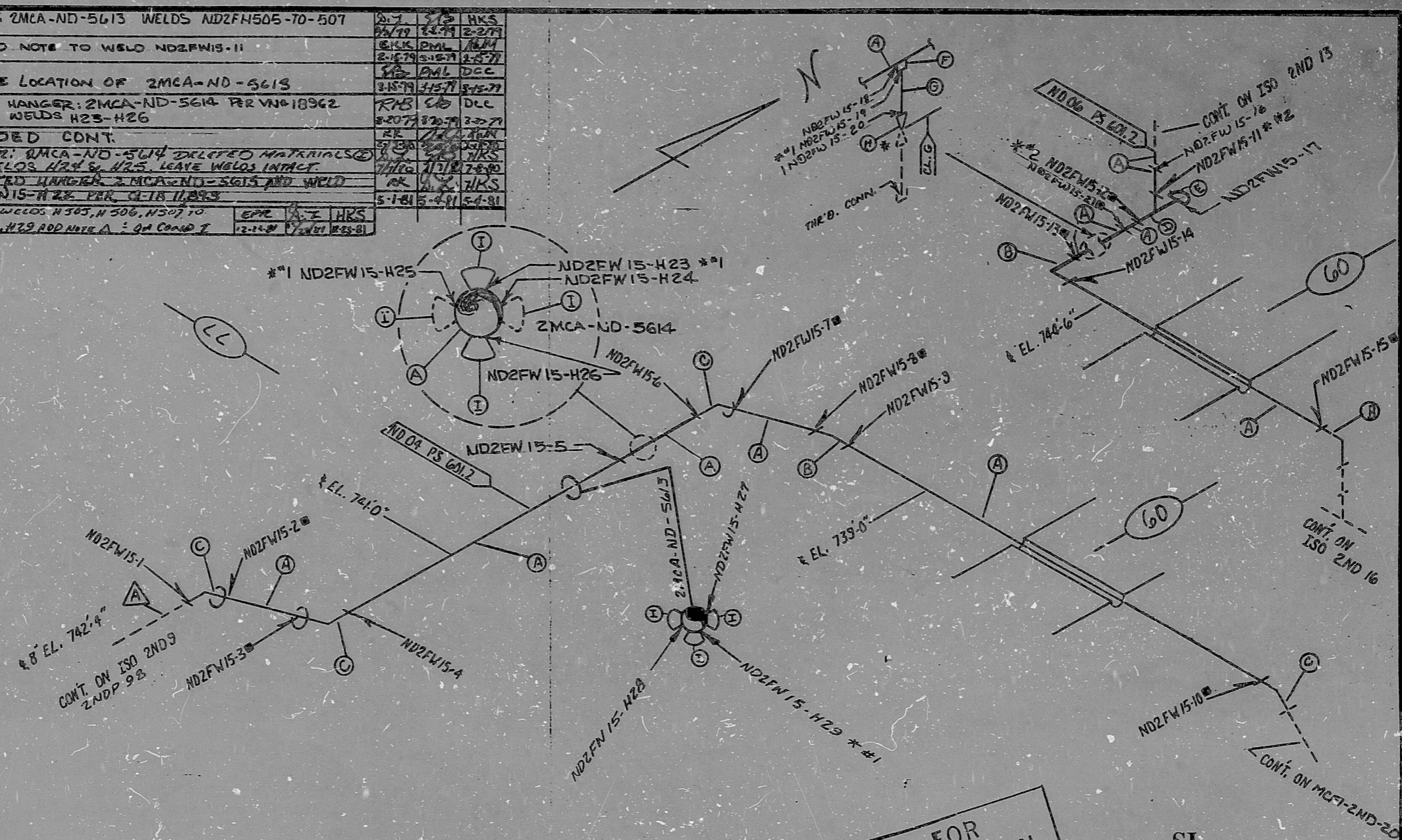
INSERVICES INSPECTION

REV. 1-28-71
 BUILDING: AUX
 ZONE A-3
 ISO. NO.: MCFI - 2ND-15
 DUKE PIPING CLASS: B, ASME III
 SYSTEM SYMBOL: ND, RESIDUAL HEAT REMOVAL
 PIPING SPEC: ND 04.06 PS 601.2 EL. 733'-0"
 DRAWING NO.: MC 2414-04-93-01 REV. 3
 PROJECT: MCGUIRE

NO.	DATE	CHKD	APPR
1	12-27-70	WRS	WRS
2	1-15-71	WRS	WRS
3	1-15-71	WRS	WRS
4	1-15-71	WRS	WRS
5	1-15-71	WRS	WRS
6	1-15-71	WRS	WRS
7	1-15-71	WRS	WRS
8	1-15-71	WRS	WRS
9	1-15-71	WRS	WRS
10	1-15-71	WRS	WRS

ADD NOTE *1 WELDS 18, 19, 20 AND MAT. "F", "G" AND "H" PER V.N. 18155
 UNIBZIG: ADDED MATERIAL @C & WELD ND2FW15-17
 ADD WELD ND2FW15-16
 ADDED RADIATION NOTE
 REL FOR CONSTR.
 REVISION O.A. CONDITION I

9	HANGER: 2MCA-ND-5613 WELDS ND2FW1505-70-507	WRS	WRS	HKS
10	ADDED NOTE TO WELD ND2FW15-11	WRS	WRS	HKS
11	CHANGE LOCATION OF 2MCA-ND-5613	WRS	WRS	HKS
12	ADDED HANGER: 2MCA-ND-5614 PER V.N. 18962 ADDED WELDS H25-H26	WRS	WRS	HKS
13	ADDED CONT.	WRS	WRS	HKS
14	HANGER: 2MCA-ND-5614 DELETED MATERIALS AT WELDS H25 & H26. LEAVE WELDS INTACT	WRS	WRS	HKS
15	DELETED HANGER: 2MCA-ND-5613 AND WELD ND2FW15-H28 PER 04-18-11093	WRS	WRS	HKS
16	CHANGE WELDS H 505, H 506, H 507 TO H 27, H 28, H 29 ADD NOTE A: QA COND 7	WRS	WRS	HKS



FOR INFORMATION ONLY

SI APERTURE CARD

FIELD WELDS MADE IN PIPE FAB SHOP
 THIS SYMBOL DENOTES MATERIALS THAT ARE PART OF PREASSEMBLED SECTIONS. THEY ARE TO BE USED BY INSPECTOR FOR FITUP AND HEAT NO. CHECK ONLY.

LAST WELD NO 29
 NOTES:
 1. THE PIPING ON THIS ISOMETRIC IS LOCATED IN A HIGH RADIATION AREA.
 * DO I.A.W. MDG-ES-1A
 * *1 THESE WELDS REQUIRE FULL INSPECTION
 * *2 BORE END I.A.W. MDG-EL-11

6	ADD WELD ND2FW15-81 BETWEEN WELDS 12 + 13 PER FIELD	WRS	WRS	HKS
5	CHANGE SCH. OF TEE & CAP (V.N. 10349) FROM SCH 20 TO 40 AND ADD NOTE *2	WRS	WRS	HKS

8	ADDED HANGER 2MCA-ND-5615, AND WELD ND2FW15-22	WRS	WRS	HKS
7	FAB SHOP NOTE	WRS	WRS	HKS

ITEM	SIZE	DES.	SPEC/GRADE	SPEC/GRADE	SCH./RATE	REMARKS
(A)	8"	PIPE SADDLE	A-36 C.S.			
(B)	1"	END 89	96-36			
(C)	1"	PIPE	SA-312, TP-304	SA-376, TP-304	SCH. 40	SMLS OR EFW
(D)	1"	H/CAP	SA-182, F-304	SA-103, WP-304	3000"	F.S.S.W
(E)	8"	PIPE CAP	SA-403	WP-304	40	SMLS EFW
(F)	8"	TEE	SA-403	WP-304	40	SMLS EFW
(G)	8"	45° ELL	SA403	WP 304	20	SMLS EFW
(H)	8"	90° ELL	SA 403	WP 304	20	SMLS EFW
(I)	8"	PIPE	SA 312 TP304	SA 376 TP 304	20	SMLS EFW

BILL OF MATERIAL

DUNHAM-PANELL, INC., CHARLOTTE 177

PDR RIDS

53

8903290412

