

INSERVICE INSPECTION

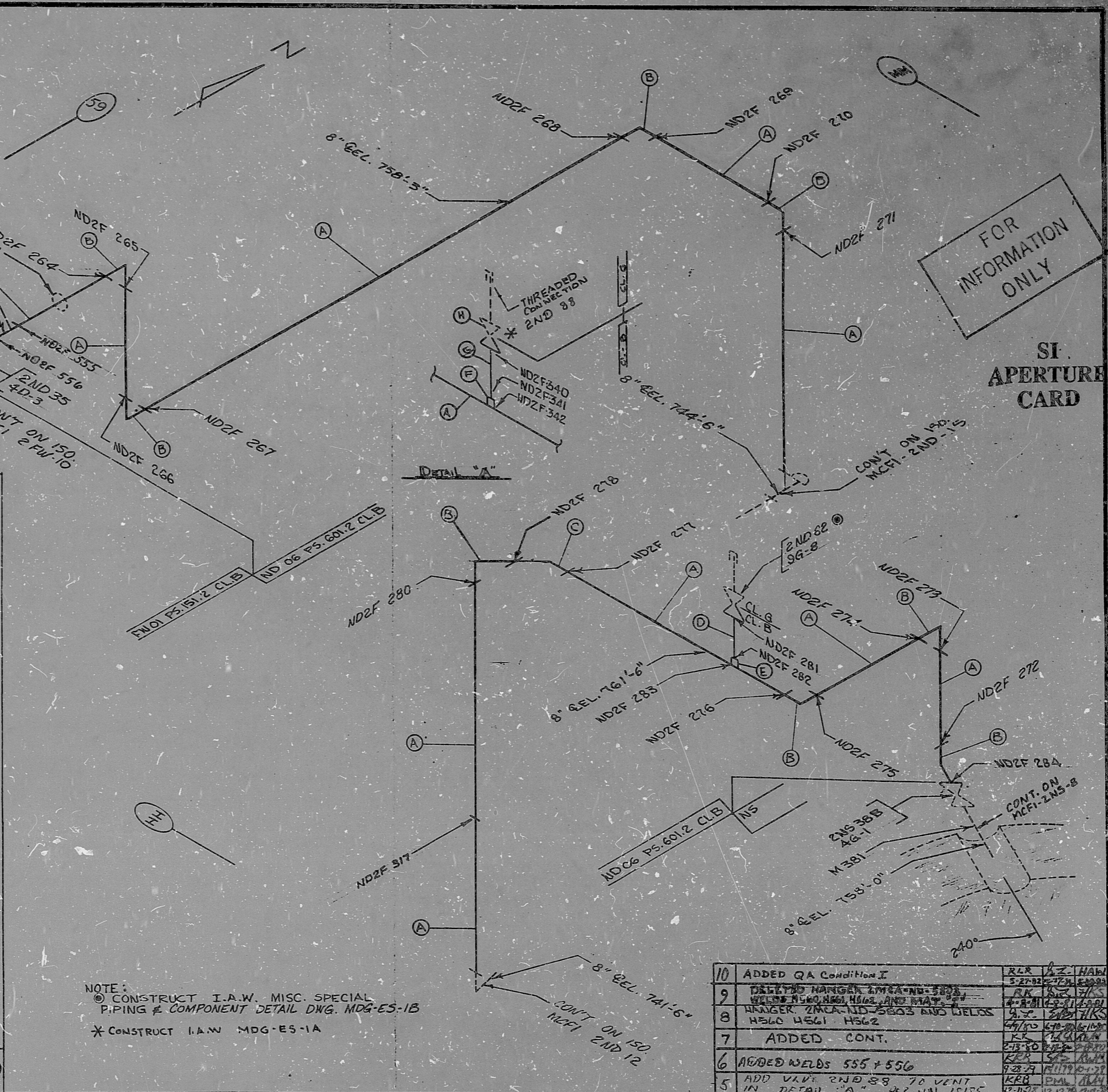
REV. 10,
 ISO NO: MCFI - 2ND 13
 BUILDING: AUXILIARY ZONE 14
 DUKE PIPING CLASS: ASME SECTION III CL.B
 SYSTEM SYMBOL: ND-RESIDUAL HEAT REMOVAL
 PIPING SPEC: ND 06 PS. 601.2
 DRAWING NO: MC 2414-04.43-00 EL. 750'0"
 PROJECT: McGUIRE

NO.	DATE	BY	CHKD	APPR
1	11-17-78	WAV	WAV	WAV
2	11-17-78	WAV	WAV	WAV
3	11-17-78	WAV	WAV	WAV
4	11-17-78	WAV	WAV	WAV

REVISION QA Condition I

4 ~~REVISED CONTINUATION AT ISO-2ND-15~~
 3 ~~ADDED HIGH POINT VENT AND WELDS NDZF-340, 341, 342.~~
 2 ~~ADDED WELD NDZF317~~
 1 ~~DELETE WELD NDZF 279, CHANGE EL. TO 761'-0" PER V.N. 17005~~
 0 ~~RELEASE FOR CONSTRUCTION~~

ITEM	SIZE	DES.	SPEC.	GRADE	OR SPEC.	WELD	OR WELD	OR WELD	MISC.
A	8"	PIPE	SA312	TP304	OR SA376	TP304	SCH. 20	.250" WALL, SMLS OR EFW.	
B	8"	PIPE	SA312	TP304	OR SA376	TP304	SCH. 20	SMLS OR EFW.	
C	8"	PIPE	SA312	TP304	OR SA376	TP304	SCH. 20	SMLS OR EFW.	
D	3/4"	PIPE	SA312	TP304	OR SA376	TP304	SCH. 40	.113" WALL, SMLS OR EFW.	
E	3/4"	W/CP LG.	SA182	F304	OR SA403	WP304	3000#	F.S./SW.	
F	1"	PIPE	SA312	TP304	OR SA376	TP304	SCH. 40	SMLS. OR EFW.	
G	1"	PIPE	SA312	TP304	OR SA376	TP304	SCH. 40	SMLS. OR EFW.	
H	1"	PIPE	SA312	TP304	OR SA376	TP304	SCH. 40	SMLS. OR EFW.	



NOTE:
 ① CONSTRUCT I.A.W. MISC. SPECIAL PIPING & COMPONENT DETAIL DNG. MDG-ES-1B
 * CONSTRUCT I.A.W. MDG-ES-1A

10	ADDED QA Condition I	RLR	WZ	HAW
9	DELETE HANGER 2MCA-NB-583	5-27-82	WZ	HAW
8	DELETE WELDS 555 & 556	4-8-81	WZ	HAW
7	ADDED CONT.	4-2-81	WZ	HAW
6	ADDED WELDS 555 & 556	2-13-80	WZ	HAW
5	ADD WELD 2ND 38 TO VENT IN DETAIL 'A'	7-28-79	WZ	HAW

PDR RIDS

890329 Φ401

