

INSER VICE INSPECTION

REV. 17

ISO. NO.: MCFI-ZND II

DUKE PIPING CLASS: ASME SECTION III D.I.B.

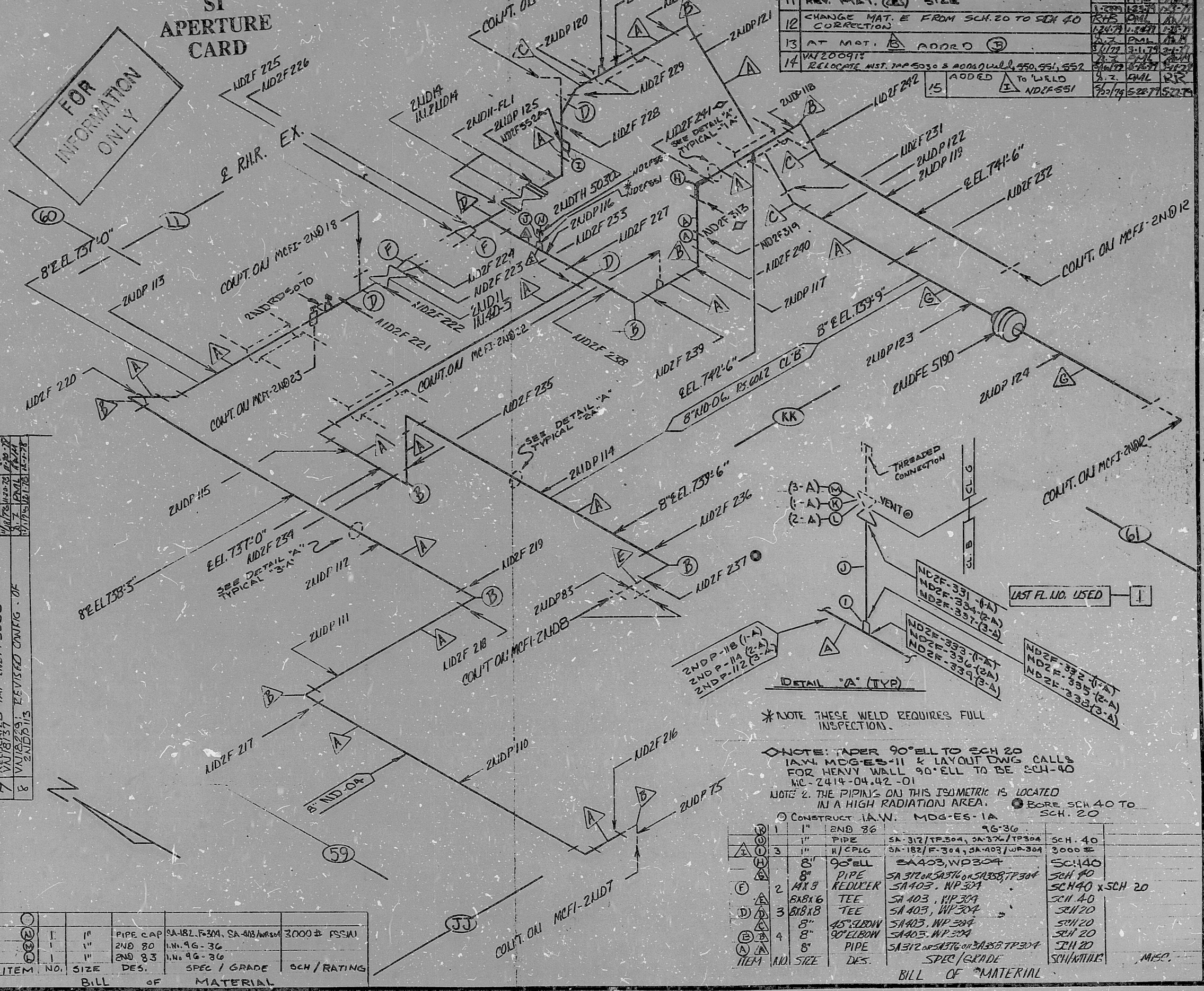
SYSTEM SYMBOL: JLD RESIDUAL HEAT REMOVAL ZONE-AS

PIPING SPEC.: ND-04, 601.2 & ND-06 601.2

DRAWING NO.: 244-04-4200-42-01

PROJECT: MCGUIRE

16	REV. 79 STRENGTH THE LAYER "A" TO WELD NDZF 552 (W/2-A 11,593)	RM	11/21/78
17	ADDED QA Condition I	RM	5-27-85



9	ADD VLV. ZND 80, 83 & 86 FOR VENTS IN DETAIL "A" (TYP) AND ADD ISO CONST.	KRP	PML	11/21/78
10	DELETED INST. TAP ZNDPT500 (W/1-B 11,593)	RM	PML	11/21/78
11	REV. M.D.T. (A) SIZE	RM	PML	11/21/78
12	CHANGE MAT. E FROM SCH. 20 TO SCH. 40 CORRECTION	KRP	PML	11/21/78
13	AT MOT. (B) ADDR0 (5)	KRP	PML	11/21/78
14	RELOCATE INST. TAP 503 & ADD INST. TAP 551, 552 TO WELD NDZF 551	KRP	PML	11/21/78
15	ADDED TO WELD NDZF 551	KRP	PML	11/21/78

NO.	REVISION	DATE	BY	CHKD.	APPR.
1	ADDED WELD NDZF 519 FIELD REASST.	11/21/78	PML	RM	
2	RELOCATED TAP ZNDPT500	11/21/78	PML	RM	
3	VALVES 829, REVISED ORIG. OF ZNDP115	11/21/78	PML	RM	

ITEM	NO.	SIZE	PIPE CAP	SA-181, F-304, SA-403, W/304	3000# FSSM
1	1	1"	2ND 80	1.1, 96-36	
2	1	1"	2ND 83	1.1, 96-36	

*NOTE THESE WELD REQUIRES FULL INSPECTION.

NOTE: TAPER 90° ELL TO SCH 20 IAW MDG-ES-11 & LAYOUT DWG CALLS FOR HEAVY WALL 90° ELL TO BE SCH 40 MC-244-04-42-01

NOTE 2: THE PIPING ON THIS ISOMETRIC IS LOCATED IN A HIGH RADIATION AREA. BORE SCH 40 TO SCH. 20

CONSTRUCT IAW. MDG-ES-1A

ITEM	NO.	SIZE	DES.	SCH/RATING	MISC.
1	1	1"	END 86	96-36	
2	1	1"	PIPE	SA-312/TP304, SA-312/TP304	SCH. 40
3	1	1"	W/CPG	SA-182/F-304, SA-403/W-304	3000#
4	1	8"	90° ELL	SA403, WP304	SCH. 40
5	1	8"	PIPE REDUCER	SA312 or SA312 or SA358/TP304 SA403, WP304	SCH 40 x SCH 20
6	2	8" X 8"	TEE	SA 403, WP 304	SCH 40
7	3	8" X 8"	TEE	SA 403, WP 304	SCH 20
8	4	8"	45° ELBOW	SA403, WP304	SCH 20
9	4	8"	90° ELBOW	SA403, WP304	SCH 20
10	4	8"	PIPE	SA312 or SA312 or SA358/TP304	SCH 20

BILL OF MATERIAL

DUNCAN-PARRELL, INC. CHARLOTTE 1876

PDR RIDS

8103290387

