

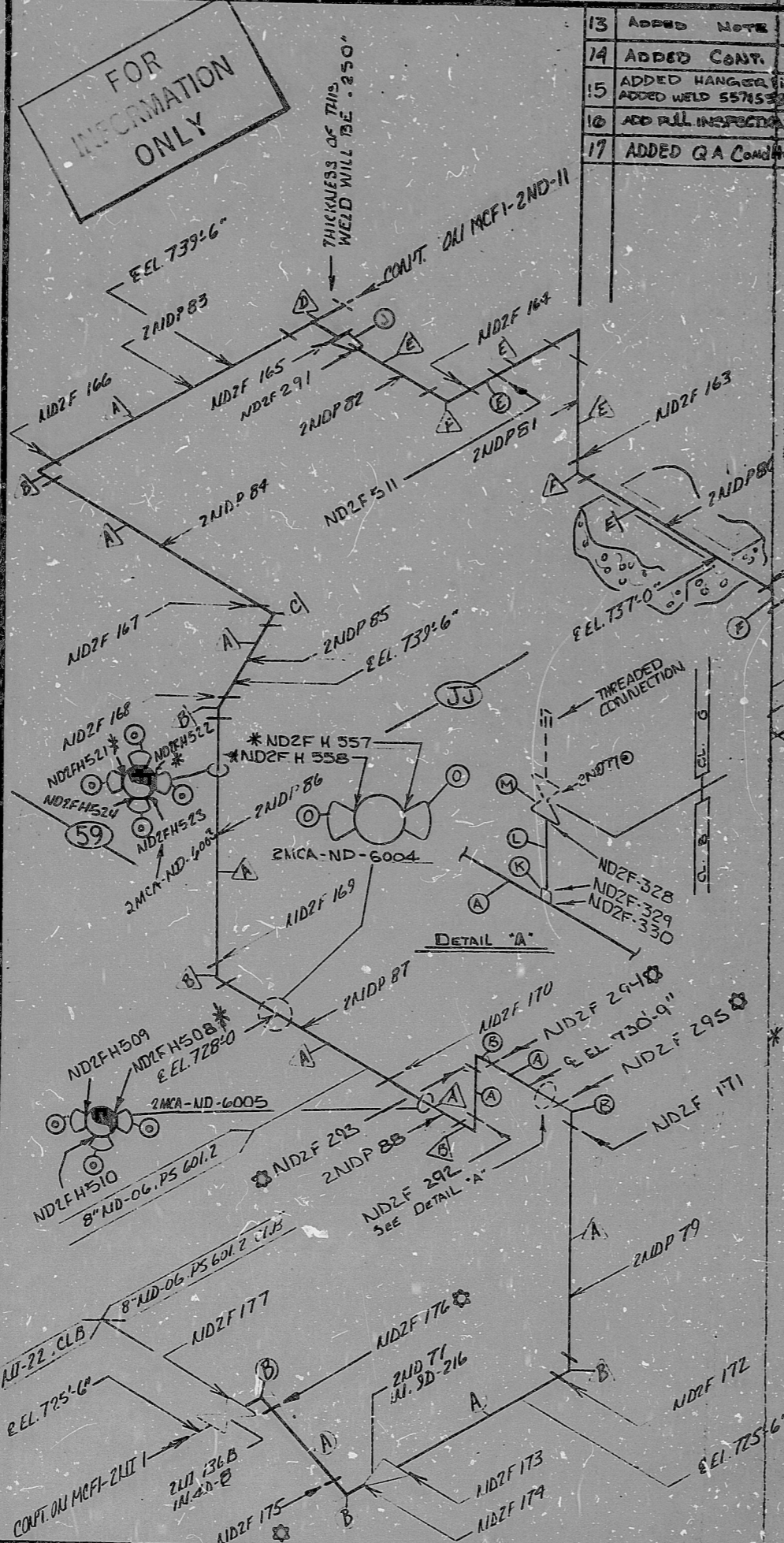
INSERVICE INSPECTION

REV. 17
 ISO NO.: MCFI-2ND 8
 BUILDING: AUX. ZONE A3, A3
 DUKING CLASS: ASME SECTION III CL B
 SYSTEM SYMBOL: NJD RESIDUAL HEAT REMOVAL
 PIPING SPEC.: ND-06, PS 601.2
 DRAWING NO.: Z4H-04-41-00, 4200
 PROJECT: MCGUIRE

FOR INFORMATION ONLY

| NO. | QA Condition I | REVISION | DATE | ORIG. CHKD. | APPR. | DATE |
|-----|----------------|----------|------|-------------|-------|------|
| 7 | | | | | | |
| 6 | | | | | | |
| 5 | | | | | | |
| 4 | | | | | | |
| 3 | | | | | | |
| 2 | | | | | | |
| 1 | | | | | | |
| 0 | | | | | | |

ADDED HIGH POINT VENT
 ADDED WELDS NDZF-328, 329, 370.
 CORRECT PIPING CLASS IN TITLE BLOCK
 ADDED WELDS NDZF 292 THRU 295 PER LAYOUT DWG.
 FIELD: ADDED MAT. "J" AND WELD NDZF 291;
 VNTZ 265
 DELETED NOTE * AND CHANGE 8" ND-06 TEE FROM SEC 20
 TO SEC. 20.X40
 RELEASE FOR CONSTRUCTION



- 13 ADDED NOTE
- 14 ADDED CONT.
- 15 ADDED HANGER 2MCA-ND-6004
- 16 ADDED WELD 557
- 17 ADDED QA Condition I

| ITEM | QTY | SIZE | DES | SPEC/GRADE | SCHEMATIC | WELDS |
|------|-----|---------|-------------|--------------------------------|-----------|----------------|
| 1 | 1 | 8" | PIPE | SA 312 005 SA 376 005 | SCHEM 20 | WALL THK. .250 |
| 2 | 1 | 8" | 90° ELBOW | SA 312 005 SA 376 005 | SCHEM 20 | WALL THK. .250 |
| 3 | 1 | 8" | 45° ELBOW | SA 312 005 SA 376 005 | SCHEM 20 | WALL THK. .250 |
| 4 | 1 | 3" | TEE | SA 403, WP 304 | SCHEM 20 | WALL THK. .216 |
| 5 | 1 | 3" | PIPE | SA 312 005 SA 376 005 | SCHEM 20 | WALL THK. .216 |
| 6 | 1 | 3" | 90° ELBOW | SA 403, WP 304 | SCHEM 20 | WALL THK. .216 |
| 7 | 1 | 3" | 45° ELBOW | SA 403, WP 304 | SCHEM 20 | WALL THK. .216 |
| 8 | 1 | 3" | REDUCER | SA 403, WP 304 | SCHEM 20 | WALL THK. .216 |
| 9 | 1 | 3" | TEE | SA 182, F304, M SA 403, WP 304 | SCHEM 20 | WALL THK. .216 |
| 10 | 1 | 6" x 3" | CONC. RED | SA-403, WP-304 | SCHEM 40 | WALL THK. .216 |
| 11 | 1 | 1" | H/CPLG. | SA-182/F304, SA-403/WP304 | SCHEM 40 | WALL THK. .216 |
| 12 | 1 | 1" | PIPE | SA-182/F304, SA-403/WP304 | SCHEM 40 | WALL THK. .216 |
| 13 | 1 | 2" | 2ND 77 | SA-182/F304, SA-403/WP304 | SCHEM 40 | WALL THK. .216 |
| 14 | 1 | 8" | PIPE SADDLE | A-36 C.S. | SCHEM 40 | WALL THK. .216 |
| 15 | 1 | 8" | SADDLE | A-36 C.S. | SCHEM 40 | WALL THK. .216 |

NOTE: THIS SYMBOL Δ DENOTES MATERIAL THAT IS PART OF A PRE-ASS. SECT. TO BE USED BY INSP. FOR FIT-UP AND HEAT NUMBER CHECK ONLY.

- NOTE 2. \odot CONST. I.A.W. MDG-ES-16
- NOTE 3. THE PIPING ON THIS ISOMETRIC IS LOCATED IN A HIGH RADIATION AREA.
- \odot CONSTRUCT I.A.W. MDG-EL-1A
- * THIS WELD REQUIRES FULL INSPECTION.
- \odot WELDS MADE IN FAB. SHOP...

| | | | |
|----|------------------------------------|-------|---------|
| 12 | HANGER: 2MCA-ND-6003 ADDED | WELDS | PML HKS |
| 11 | ADDED WELDS NDZF 521, 524 | WELDS | PML HKS |
| 10 | ADDED WELDS NDZF 508, 509, 510 | WELDS | PML HKS |
| 9 | ADDED HANGERS 6311, 12, 13, 14, 15 | WELDS | PML HKS |
| 8 | ADD V.V. NO. 2ND 77 TO VENT | WELDS | PML HKS |
| 6 | V.V. IN DETAIL "A" | WELDS | PML HKS |

SI APERTURE CARD

PDR RIDS

8903290361

