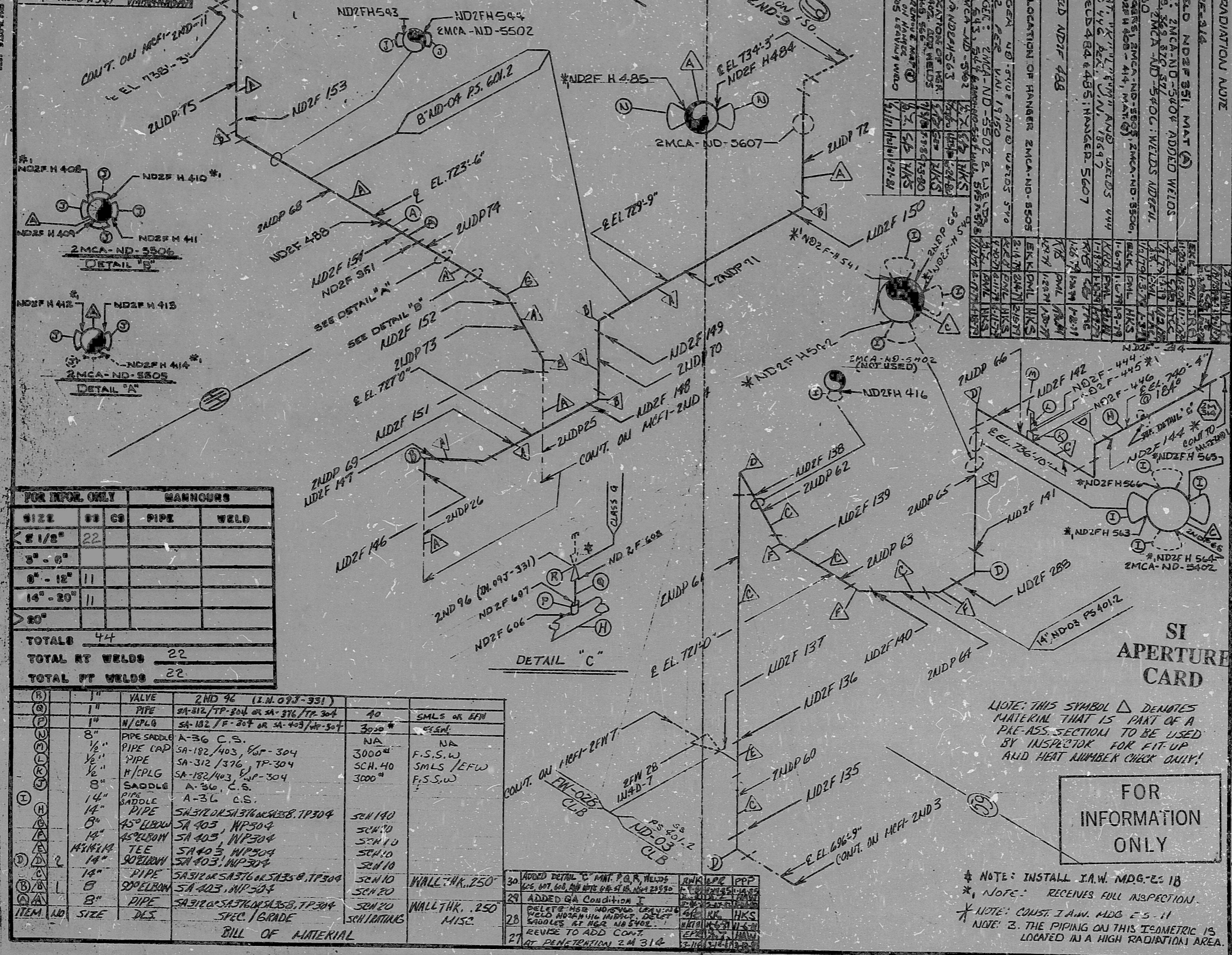


7	ADD NDZF 315 AND MATERIAL (C) 116253	PML	HAW	2/2	22	ADDED CONT.	RE	1/11	1/11
8	AT PENETRATION 2M 314 CHANGE @ 144 TO @ 147 AND DELETE NDZF 315	PML	HAW	2/2	26	DELETE 2MCA-ND-5404 AND WELDS NDZF H 368-971	RE	2-13-80	2-13-80
13	HANGERS: ADDED WELD NDZF H 416 2MCA-ND-5460	PML	HKS	11-10-79					
20	DELETED WELDS H 374 + H 320 + H 575 THRU H 578	DMK	RGG	1-10-79					
21	ADDED WELDS H 579 + H 580 + H 581 + H 582 + H 583 + H 584	PML	HKS	6-27-79					



FOR INFO. ONLY		MANHOURS	
SIZE	WT	PIPE	WELD
2 1/8"	22		
3" - 6"			
6" - 12"	11		
14" - 20"	11		
20"			
<b>TOTALS</b>	<b>44</b>		
<b>TOTAL RT WELDS</b>		<b>22</b>	
<b>TOTAL FT WELDS</b>		<b>22</b>	

ITEM	NO	SIZE	DETS	QTY	UNIT	REMARKS
(R)	1"	VALVE	2ND 96 (I.N. 093-331)	1	VALVE	
(P)	1"	PIPE	SA-312/TP-304 OR SA-316/TP-304	40	SMLS OR EFW	
(C)	1"	H/PLG	SA-182/F-304 OR SA-403/WP-304	3000"	CLB	
(S)	8"	PIPE SADDLE	A-36 C.S.	NA	NA	
(S)	1/2"	PIPE CAP	SA-182/403, WP-304	3000"	F.S.S.W	
(S)	1/2"	PIPE	SA-312/376, TP-304	SCH. 40	SMLS/EFW	
(S)	1/2"	H/PLG	SA-182/403, WP-304	3000"	F.S.S.W	
(L)	8"	SADDLE	A-36 C.S.			
(L)	14"	PIPE SADDLE	A-36 C.S.			
(H)	14"	PIPE	SA-312/SA-316/SA-316/SA-316, TP-304	500	WALL THK. .250	
(H)	8"	45° ELBOW	SA-403, WP-304	500	WALL THK. .250	
(H)	14"	45° ELBOW	SA-403, WP-304	500	WALL THK. .250	
(H)	14"	TEE	SA-403, WP-304	500	WALL THK. .250	
(H)	14"	90° ELBOW	SA-403, WP-304	500	WALL THK. .250	
(H)	14"	PIPE	SA-312/SA-316/SA-316/SA-316, TP-304	500	WALL THK. .250	
(H)	8"	90° ELBOW	SA-403, WP-304	500	WALL THK. .250	
(H)	8"	PIPE	SA-312/SA-316/SA-316/SA-316, TP-304	500	WALL THK. .250	
<b>BILL OF MATERIAL</b>						

30	ADDED DETAIL 'C' MNT. P.A.R. WELDS	RE	1/11	1/11
29	ADDED GA CONDITION I	RE	1/11	1/11
28	DELETE HSR NO. 5404 LEAVING WELD NO. 5404. DELETE SADDLES AT HSR NO. 5404. REVISE TO ADD CONT.	RE	1/11	1/11
27	AT PENETRATION 2M 314	RE	1/11	1/11

NO.	REVISION	DATE	BY	CHKD	APPD
1	RELEASE FOR CONSTRUCTION				
2	CHANGE CONFIGURATION AND ADDED NDZF 288				
3	DELETE 2NDP 67 AND NDZF 145				
4	ADD WELD NDZF 144				
5	CORRECT PIPING CLASS IN TITLE BLOCK				
6	ADD WELD NDZF 351, MAT (C)				
7	ADD WELD NDZF 351, MAT (C)				
8	ADD WELD NDZF 351, MAT (C)				
9	ADD WELD NDZF 351, MAT (C)				
10	ADD WELD NDZF 351, MAT (C)				
11	ADD WELD NDZF 351, MAT (C)				
12	ADD WELD NDZF 351, MAT (C)				
13	ADD WELD NDZF 351, MAT (C)				
14	ADD WELD NDZF 351, MAT (C)				
15	ADD WELD NDZF 351, MAT (C)				
16	ADD WELD NDZF 351, MAT (C)				
17	ADD WELD NDZF 351, MAT (C)				
18	ADD WELD NDZF 351, MAT (C)				
19	ADD WELD NDZF 351, MAT (C)				
20	ADD WELD NDZF 351, MAT (C)				
21	ADD WELD NDZF 351, MAT (C)				
22	ADD WELD NDZF 351, MAT (C)				
23	ADD WELD NDZF 351, MAT (C)				
24	ADD WELD NDZF 351, MAT (C)				
25	ADD WELD NDZF 351, MAT (C)				

NO.	REVISION	DATE	BY	CHKD	APPD
1	RELEASE FOR CONSTRUCTION				
2	CHANGE CONFIGURATION AND ADDED NDZF 288				
3	DELETE 2NDP 67 AND NDZF 145				
4	ADD WELD NDZF 144				
5	CORRECT PIPING CLASS IN TITLE BLOCK				
6	ADD WELD NDZF 351, MAT (C)				
7	ADD WELD NDZF 351, MAT (C)				
8	ADD WELD NDZF 351, MAT (C)				
9	ADD WELD NDZF 351, MAT (C)				
10	ADD WELD NDZF 351, MAT (C)				
11	ADD WELD NDZF 351, MAT (C)				
12	ADD WELD NDZF 351, MAT (C)				
13	ADD WELD NDZF 351, MAT (C)				
14	ADD WELD NDZF 351, MAT (C)				
15	ADD WELD NDZF 351, MAT (C)				
16	ADD WELD NDZF 351, MAT (C)				
17	ADD WELD NDZF 351, MAT (C)				
18	ADD WELD NDZF 351, MAT (C)				
19	ADD WELD NDZF 351, MAT (C)				
20	ADD WELD NDZF 351, MAT (C)				
21	ADD WELD NDZF 351, MAT (C)				
22	ADD WELD NDZF 351, MAT (C)				
23	ADD WELD NDZF 351, MAT (C)				
24	ADD WELD NDZF 351, MAT (C)				
25	ADD WELD NDZF 351, MAT (C)				

NOTE: THIS SYMBOL Δ DENOTES MATERIAL THAT IS PART OF A PRE-ASS. SECTION TO BE USED BY INSPECTOR FOR FIT UP AND HEAT NUMBER CHECK ONLY!

FOR INFORMATION ONLY

\* NOTE: INSTALL I.A.W. MDG-ES 18  
 \* NOTE: RECEIVES FULL INSPECTION.  
 \* NOTE: CONST. I.A.W. MDG E-5 11  
 \* NOTE: 3. THE PIPING ON THIS ISOMETRIC IS LOCATED IN A HIGH RADIATION AREA.

INSERVICE INSPECTION

REV. 30

ISO NO:	MCF-2UD 7
DUKE PIPING CLASS:	ASME SECTION III CLASS 2
SYSTEM SYMBOL:	NU RESONANT HEAT REMOVAL (A1/A2/A3)
PIPING SPEC:	AID-03-04 4012, 6012
DRAWING NO.:	2414 04 10-00 42-00 41-00
PROJECT:	MEASURE

PDR RIDS

8903290357

