

INSERVICE INSPECTION

ISO NO: MCFI-2ND5

DUKE PIPING CLASS: ASME SECTION III CLB

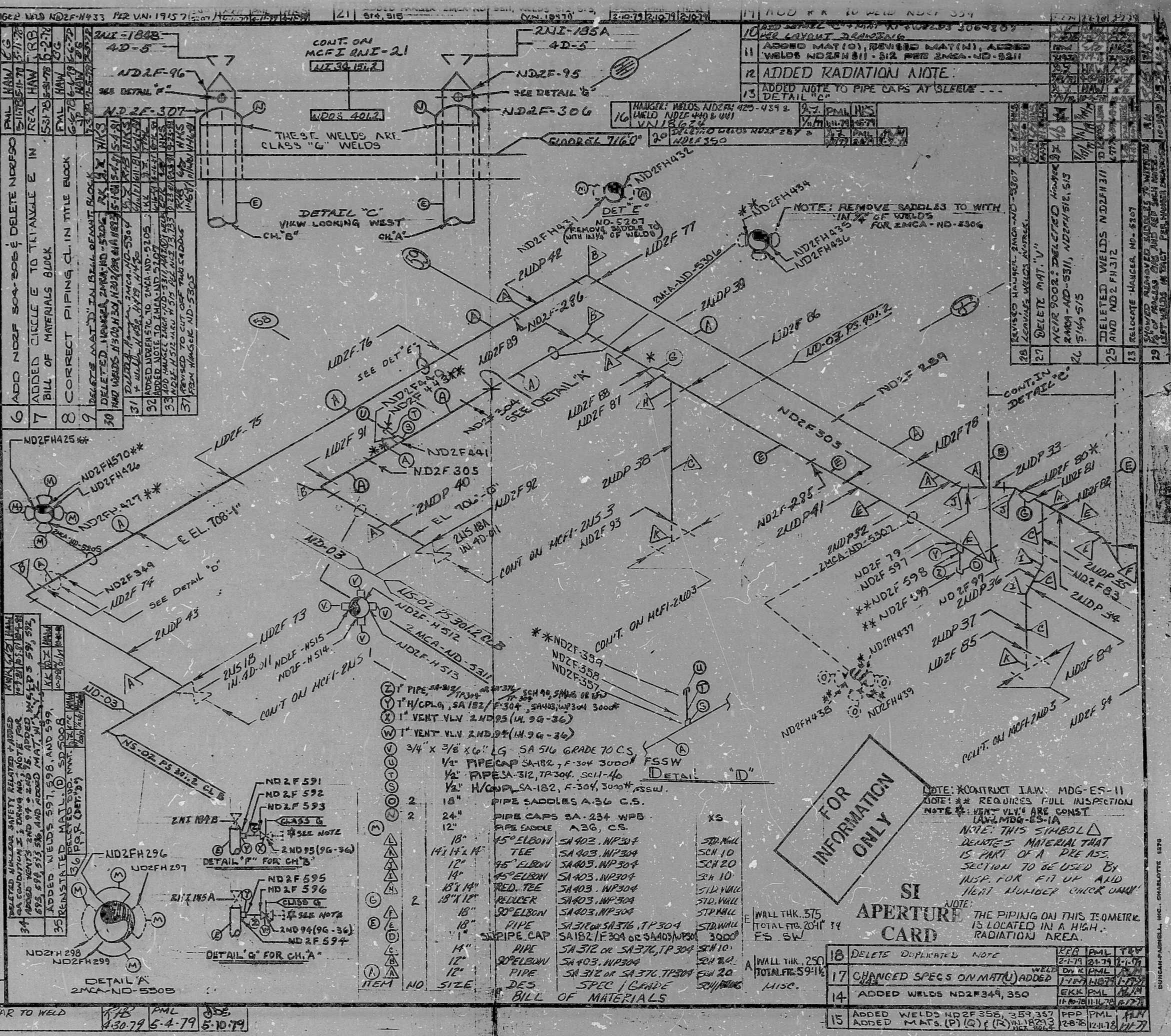
SYSTEM SYMBOL: RESIDUAL HEAT REMOVAL AID

PIPING SPEC: ND-03, PS. 401.2

DRAWING NO.: 2414-04.40-00; 2414-04.41-00

PROJECT: MCGUIRE

REV.	DATE	BY	CHKD.	APPR.	DATE
1	4-10-78	WMS			
2	7-17-78	WMS			
3	7-17-78	WMS			
4	7-17-78	WMS			
5	7-17-78	WMS			



FOR INFORMATION ONLY

SI APERTURE CARD

NOTE: CONTRACT I.A.W. MDG-ES-11
 NOTE: ** REQUIRES FULL INSPECTION
 NOTE: ** VENT VLV'S ARE CONST
 I.A.W. MDG-ES-1A
 NOTE: THIS SYMBOL Δ
 DENOTES MATERIAL THAT
 IS PART OF A PRE ASS.
 SECTION TO BE USED BY
 INSP. FOR FIT UP AND
 HEAT NUMBER CHECK ONLY

THE PIPING ON THIS ISOMETRIC
 IS LOCATED IN A HIGH-
 RADIATION AREA.

18	DELETED DUPLICATED NOTE	KFR	PML	TRV
17	CHANGED SPECS ON MAT'L ADDED	WEL	ON E	PML
14	ADDED WELDS NDZF 349, 350	EKK	PML	H/A
15	ADDED WELDS NDZF 356, 359, 357 ADDED MATS. (P) (Q) (R) (S) (T) (U) (V) (W) (X) (Y) (Z)	FPD	PML	H/A

NO.	REVISION	DATE	BY	CHKD.	APPR.
5	ADDED WELD NDZF 303, CUT OUT REWELD NDZF 285	5-1-78	WMS		
4	ADD HANGER ATTACHMENTS 2MCA-ND-5305, 5206 AND WELDS NDZF 286-302 (PER V.I.'S 14-506, 14-508)	4-10-78	WMS		
3	ADDED WELD NDZF 289	7-17-78	WMS		
2	ADDED WELDS NDZF-285, 286, 287 REVISED TO CHANGE MAT (Q) TO MAT (E) AT VALVES 2M1 18418 AND 2M1 18514 ALSO, TOTAL FTG. AND WALL THK. OF MAT (Q) AND (E) IN BILL OF MATERIAL	7-17-78	WMS		
1	REL. FOR CONST.	7-17-78	WMS		
0					

REV.	DATE	BY	CHKD.	APPR.	DATE
6					
7					
8					
9					
10					
11					
12					
13					
16					
20					
28					
27					
26					
25					
23					
22					
21					
20					
19					
18					
17					
16					
15					
14					
13					
12					
11					
10					
9					
8					
7					
6					
5					
4					
3					
2					
1					

PDR RIDS

8903290355

