

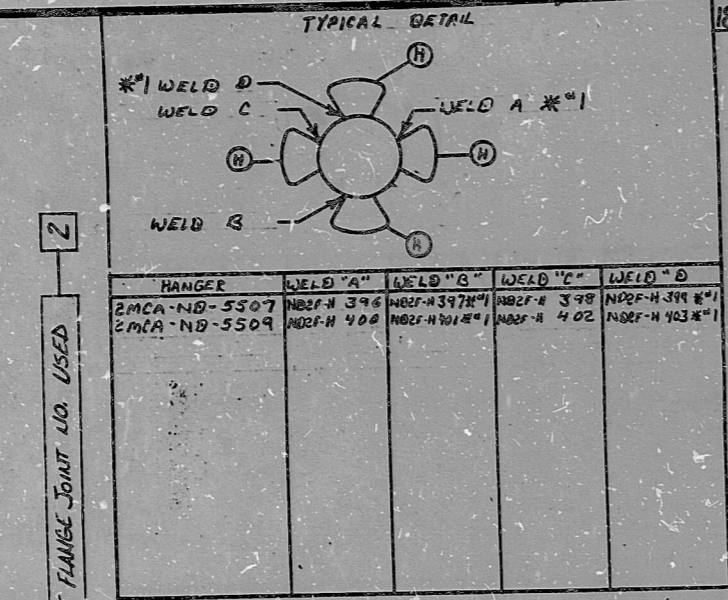
INSERVICE INSPECTION

REV. 24  
 ISO. NO.: MD1-210-4  
 BUILDING: AUXILIARY (ZONE-A1)  
 DUKE PIPING CLASS: ASME SECTION II  
 SYSTEM SYMBOL: LLD RESIDUAL HEAT REMOVAL  
 PIPING SPEC.: MD-04, PS. 601.2  
 DRAWING NO.: MD-04-01-0-00  
 PROJECT: MC GAINE

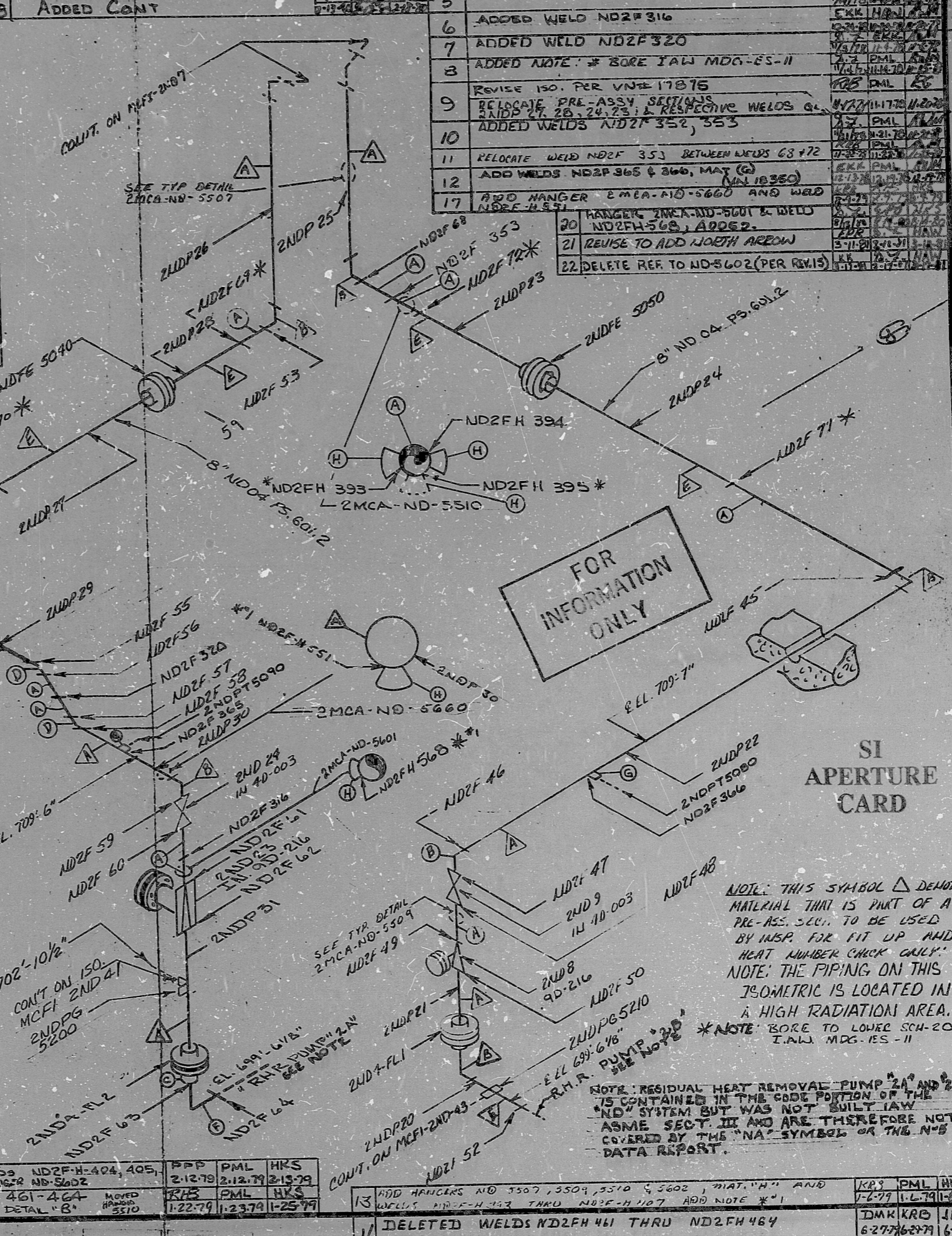
REV.	DATE	BY	CHKD.	APPR.
1	8-1-78	DMK	KRB	JDM
2	8-1-78	DMK	KRB	JDM
3	8-1-78	DMK	KRB	JDM
4	8-1-78	DMK	KRB	JDM
5	8-1-78	DMK	KRB	JDM
6	8-1-78	DMK	KRB	JDM
7	8-1-78	DMK	KRB	JDM
8	8-1-78	DMK	KRB	JDM
9	8-1-78	DMK	KRB	JDM
10	8-1-78	DMK	KRB	JDM
11	8-1-78	DMK	KRB	JDM
12	8-1-78	DMK	KRB	JDM
13	8-1-78	DMK	KRB	JDM
14	8-1-78	DMK	KRB	JDM
15	8-1-78	DMK	KRB	JDM
16	8-1-78	DMK	KRB	JDM
17	8-1-78	DMK	KRB	JDM
18	8-1-78	DMK	KRB	JDM
19	8-1-78	DMK	KRB	JDM
20	8-1-78	DMK	KRB	JDM
21	8-1-78	DMK	KRB	JDM
22	8-1-78	DMK	KRB	JDM

NO.	REVISION	QA CONDITION I
1	REVISED TO CHANGE MAT. IN. 2NDP20	
2	CORRECT SPECS OF MATERIAL F	
3	REVISED ITEM NOS OF VALVES 2NDP2 & 2NDP23 (V.N. 16613)	
4	DELETED WELDS ND2FH 405, 406 & ADDED RADIATION NOTE	

ITEM	NO.	SIZE	DES.	STRENGTH	MISC.
1	1	8"	PIPE	SCH 40	SHLS OR EFW
2	2	8"	FLG.	SCH 40	SHLS OR EFW
3	3	8"	FLG.	SCH 40	SHLS OR EFW
4	4	8"	FLG.	SCH 40	SHLS OR EFW
5	5	8"	FLG.	SCH 40	SHLS OR EFW
6	6	8"	FLG.	SCH 40	SHLS OR EFW
7	7	8"	FLG.	SCH 40	SHLS OR EFW
8	8	8"	FLG.	SCH 40	SHLS OR EFW
9	9	8"	FLG.	SCH 40	SHLS OR EFW
10	10	8"	FLG.	SCH 40	SHLS OR EFW
11	11	8"	FLG.	SCH 40	SHLS OR EFW
12	12	8"	FLG.	SCH 40	SHLS OR EFW
13	13	8"	FLG.	SCH 40	SHLS OR EFW
14	14	8"	FLG.	SCH 40	SHLS OR EFW
15	15	8"	FLG.	SCH 40	SHLS OR EFW
16	16	8"	FLG.	SCH 40	SHLS OR EFW
17	17	8"	FLG.	SCH 40	SHLS OR EFW
18	18	8"	FLG.	SCH 40	SHLS OR EFW
19	19	8"	FLG.	SCH 40	SHLS OR EFW
20	20	8"	FLG.	SCH 40	SHLS OR EFW
21	21	8"	FLG.	SCH 40	SHLS OR EFW
22	22	8"	FLG.	SCH 40	SHLS OR EFW
23	23	8"	FLG.	SCH 40	SHLS OR EFW
24	24	8"	FLG.	SCH 40	SHLS OR EFW



HANGER	WELD "A"	WELD "B"	WELD "C"	WELD "D"
EMCA-ND-5507	ND2FH 396	ND2FH 397	ND2FH 398	ND2FH 399
EMCA-ND-5509	ND2FH 400	ND2FH 401	ND2FH 402	ND2FH 403



13	ADD HANGERS NO 5507, 5509, 5510 & 5602, MAT. "H" AND WELDS ND2FH 403 THRU ND2FH 407 ADD NOTE *1	KRB	PML	HKS
14	DELETED WELDS ND2FH 404, 405, 406, 407. HANGER ND-5602	DMK	KRB	JDM
15	ADDED WELDS 461-464	DMK	KRB	JDM
16	ADDED HANGER DETAIL "B"	DMK	KRB	JDM
17	ADDED WELDS ND2FH 352, 353	DMK	KRB	JDM
18	ADDED CONT	DMK	KRB	JDM
19	DELETED WELDS ND2FH 461 THRU ND2FH 464	DMK	KRB	JDM
20	RELOCATE WELD ND2FH 353 BETWEEN WELDS 63 & 72	DMK	KRB	JDM
21	ADD WELDS ND2FH 365 & 366, MAT. "G" (MIN 18350)	DMK	KRB	JDM
22	DELETE REF TO ND-5602 (PER REV. 15)	DMK	KRB	JDM

SI APERTURE CARD

NOTE: THIS SYMBOL  $\Delta$  DENOTES MATERIAL THAT IS PART OF A PRE-ASS. SECT. TO BE USED BY INSP. FOR FIT UP AND HEAT NUMBER CHECK ONLY. NOTE: THE PIPING ON THIS ISOMETRIC IS LOCATED IN A HIGH RADIATION AREA. \*NOTE: BORE TO LOWER SCH-20 T.I.W. MDG-1ES-11

NOTE: RESIDUAL HEAT REMOVAL PUMP "2A" AND "2B" IS CONTAINED IN THE CODE PORTION OF THE "ND" SYSTEM, BUT WAS NOT BUILT IAW ASME SECT. III AND ARE THEREFORE NOT COVERED BY THE "NA" SYMBOLS OF THE "ND" DATA REPORT.

DUNHAM-PAL, S.L. INC., CHARLOTTE 1878



DR RIDS

8903290352

