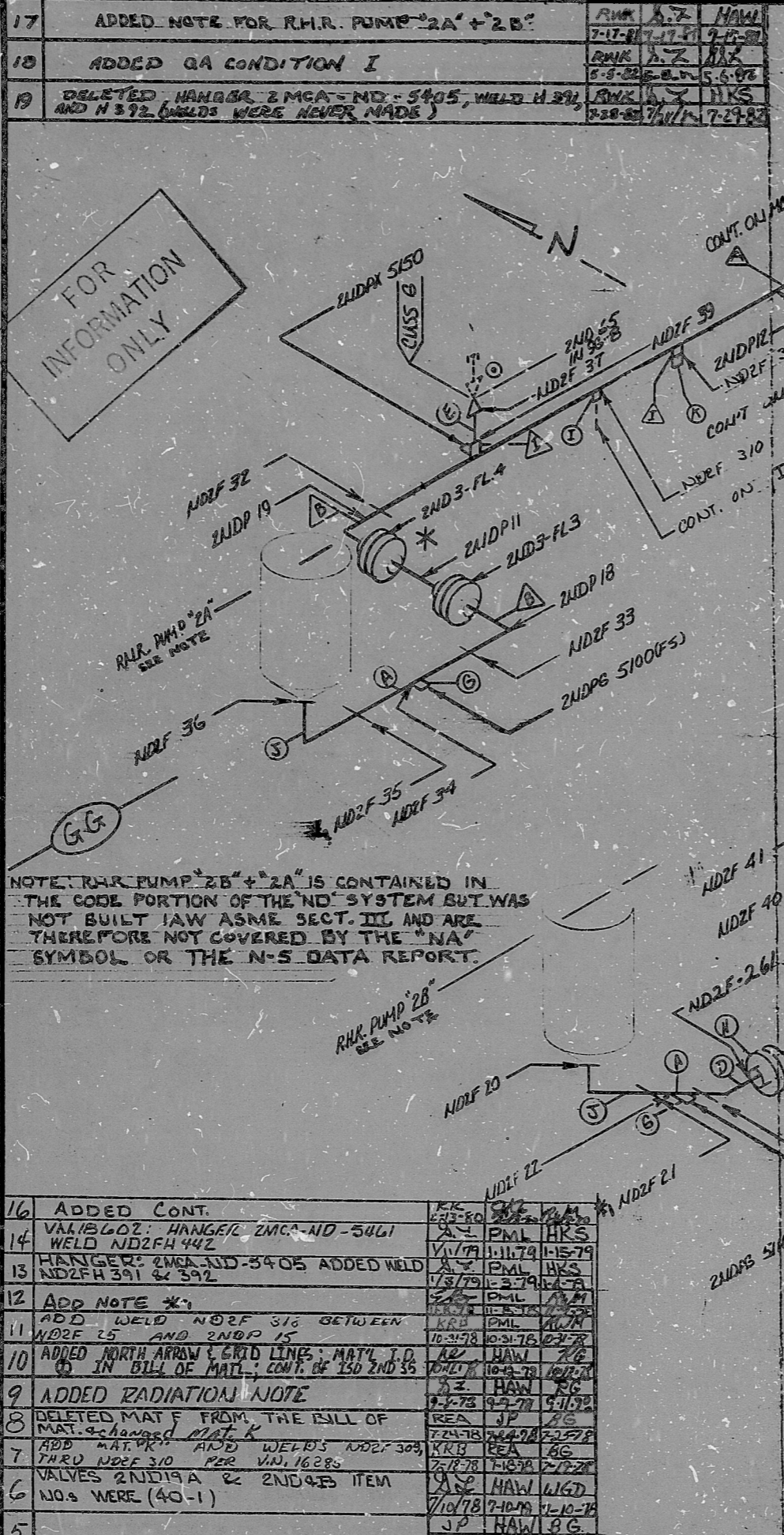


INSPECTION
 INSERVICE

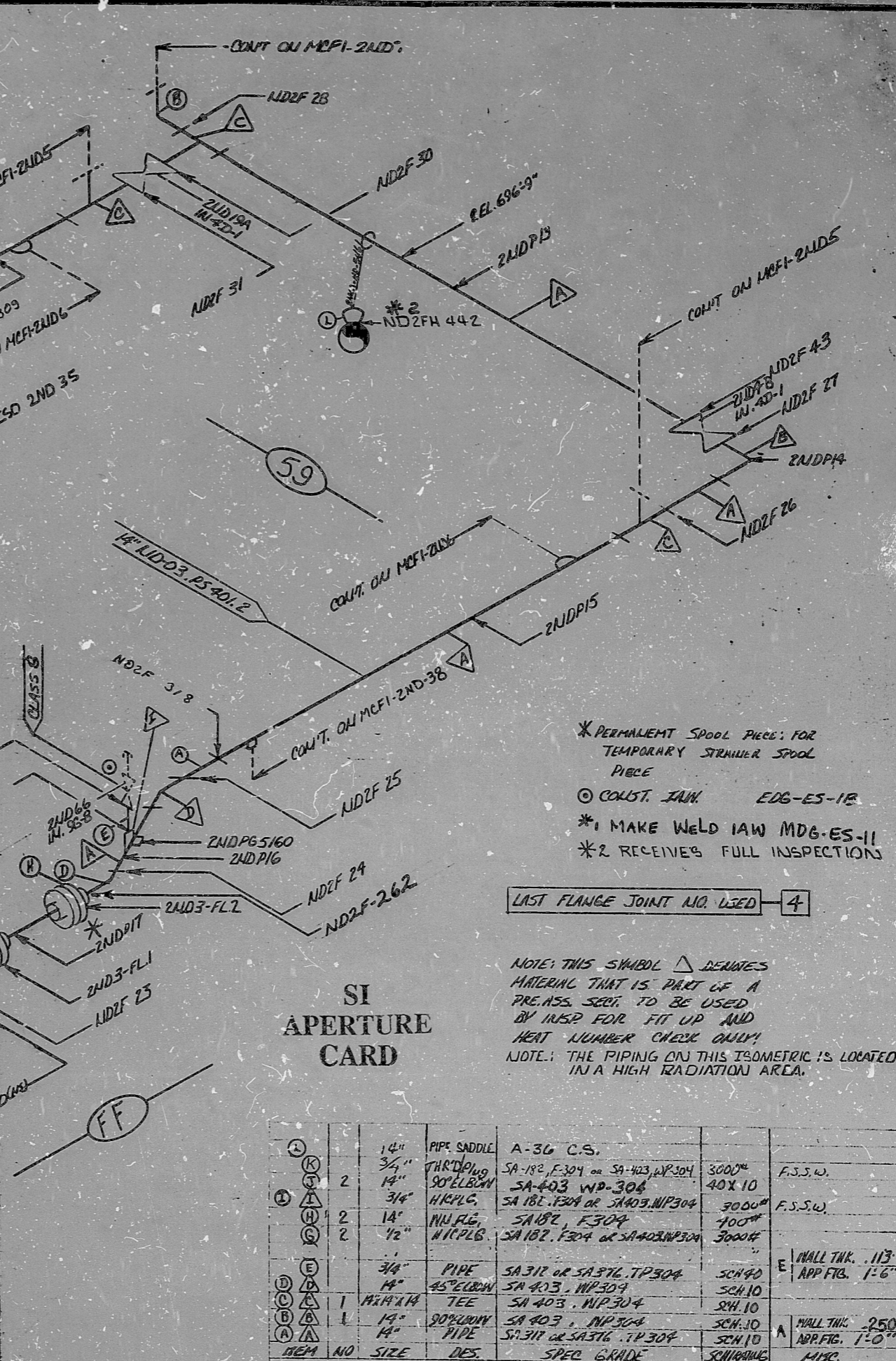
REV. 19
 BUILDING: AUX (A-1)
 ISO NO.: MCFI-21D3
 DUKE PIPING CLASS: ASME SECTION III CLASS
 SYSTEM SYMBOL: RESIDUAL ABT REMAIN 21D
 PIPING SPEC: LD-03, DS401.2
 DRAWING NO.: 2114-04 10-00
 PROJECT: MEASURE

NO.	DATE	DESCRIPTION
17	7-17-79	AWK A.Z HAW
18	7-17-79	AWK A.Z HAW
19	7-29-79	AWK A.Z HAW

NO.	DATE	DESCRIPTION
16	7-24-79	AWK A.Z HAW
14	7-17-79	AWK A.Z HAW
13	7-17-79	AWK A.Z HAW
12	7-17-79	AWK A.Z HAW
11	7-17-79	AWK A.Z HAW
10	7-17-79	AWK A.Z HAW
9	7-17-79	AWK A.Z HAW
8	7-17-79	AWK A.Z HAW
7	7-17-79	AWK A.Z HAW
6	7-17-79	AWK A.Z HAW
5	7-17-79	AWK A.Z HAW
15	7-17-79	AWK A.Z HAW



NOTE: RHR PUMP "2B" + "2A" IS CONTAINED IN THE CODE PORTION OF THE ND SYSTEM BUT WAS NOT BUILT IAW ASME SECT. III AND ARE THEREFORE NOT COVERED BY THE "NA" SYMBOL OR THE N-S DATA REPORT.



SI APERTURE CARD

ITEM	NO	SIZE	DES.	MATERIAL	QUANTITY	REMARKS
Ⓚ	2	1 1/4"	PIPE SADDLE	A-36 C.S.		
Ⓚ	2	3/4"	THRO' PIPING	SA-192, F-304 or SA-403, WP-304	3000"	F.S.S.W.
Ⓚ	2	1 1/4"	90° ELBOW	SA-403 WP-304	40X10	
Ⓚ	2	3/4"	HICPLC	SA-182, F304 or SA-403, WP-304	3000"	F.S.S.W.
Ⓚ	2	1 1/4"	NIP FLG	SA-182, F304	400"	
Ⓚ	2	1/2"	NIP FLG	SA-182, F304 or SA-403, WP-304	3000"	
Ⓚ	1	3/4"	PIPE	SA-312 or SA-376, TP-304	SCH 40	
Ⓚ	1	1 1/4"	45° ELBOW	SA-403, WP-304	SCH 10	
Ⓚ	1	1 1/4"	TEE	SA-403, WP-304	SCH 10	
Ⓚ	1	1 1/4"	90° ELBOW	SA-403, WP-304	SCH 10	
Ⓚ	1	1 1/4"	PIPE	SA-312 or SA-376, TP-304	SCH 10	
Ⓚ	1	1 1/4"	TEE	SPEC GRADE	SCH 10	

BILL OF MATERIAL

* PERMANENT SPOOL PIECE; FOR TEMPORARY STRAINER SPOOL PIECE
 Ⓚ CONST. JAW EDG-ES-1E
 *1 MAKE WELD IAW MDG-ES-11
 *2 RECEIVES FULL INSPECTIONS

LAST FLANGE JOINT NO. USED 4

NOTE: THIS SYMBOL Δ DENOTES MATERIAL THAT IS PART OF A PRE-ASS. SECT. TO BE USED BY INSP FOR FIT UP AND HEAT NUMBER CHECK ONLY!
 NOTE: THE PIPING ON THIS ISOMETRIC IS LOCATED IN A HIGH RADIATION AREA.

PDR RIDS

8903290350

