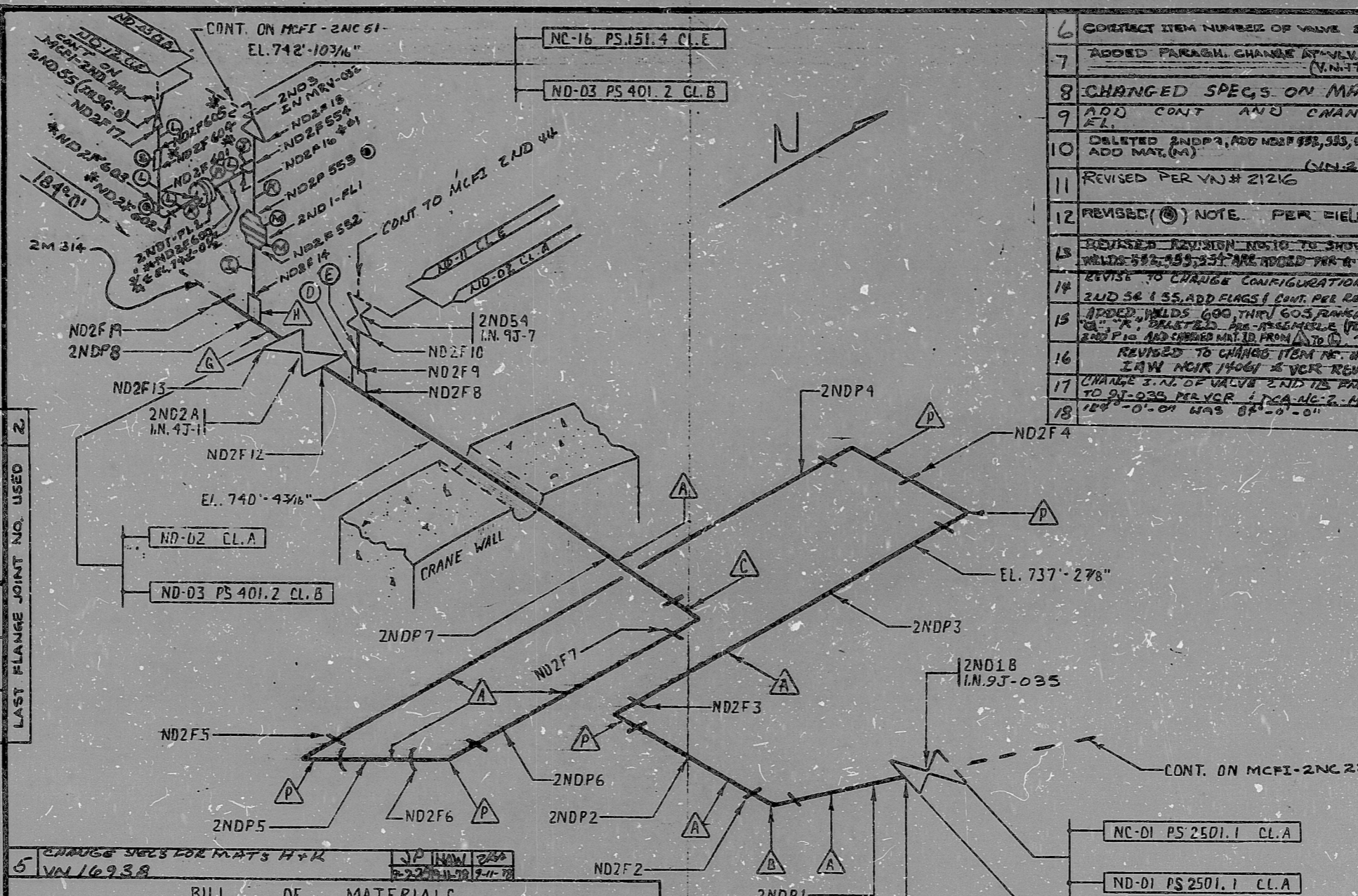


INSERVICE INSPECTION

REV. 18  
 ISO. NO.: MCFI-2ND-1  
 BUILDING: REACTOR  
 DUKE PIPING CLASS: ACME SECT III CL.A & B  
 SYSTEM SYMBOL: ND RESIDUAL HEAT REMOVAL SYS. R-22 & R-23  
 PIPING SPEC: ND-01, ND-02 PS2501.1 / ND-03 PS 401.2  
 DRAWING NO.: MC-2414-04-20-00, 01  
 PROJECT: MCGUIRE

REV.	DATE	BY	CHKD.	APPR.
18	12-11-79	JK	JK	JK
17	12-11-79	JK	JK	JK
16	12-11-79	JK	JK	JK
15	12-11-79	JK	JK	JK
14	12-11-79	JK	JK	JK
13	12-11-79	JK	JK	JK
12	12-11-79	JK	JK	JK
11	12-11-79	JK	JK	JK
10	12-11-79	JK	JK	JK
9	12-11-79	JK	JK	JK
8	12-11-79	JK	JK	JK
7	12-11-79	JK	JK	JK
6	12-11-79	JK	JK	JK

NO.	REVISION	QA CONDITION	DATE	BY	CHKD.	APPR.
0	RELEASED FOR CONSTRUCTION					
1	DELETED WELD # ND2F11 AND MAT. (F), ADDED FLAG AT VLV. 2ND54					
2	CHANGE CALL OUT FOR MAT. (A) FROM SA-403, WP-316 TO SA-403, WP-316					
3	ADD SA-376, TP-316 TO CALL OUT OF MAT. (A) CORRECT SYSTEM SYMBOL SECONDARY NO. AT VALVE 2ND54					
4	DELETE MAT. (M), (N) & WELD ND2F18 AND ADD NOTE #					



BILL OF MATERIALS

CLASS	DESCRIPTION	QTY	REMARKS
(R)	3/4" FLANGE, SA-182/F-304, 600#, RF/SW		
(S)	3/4" 90° ELL, SA-182/F-304 OR SA-403/WP-304, SCH 3000#, FS/SW		
A	(P) 14" 90° ELL SA-403 WP 316 SCH. 140 - 1.25"		
A	(M) 4" FLANGE; SA-182, F-304, R.F. W.N., 300#, SCH. 40 .237" WL.		
A	(S) 3/4" FULL COUPLING SA-182/F-304 OR SA-403/WP-304, SCH. 3000# FS/SW		
B	(L) 3/4" PIPE SA-312 OR SA-376 TP304 SCH. 40 - .237"		
B	(K) 4" PIPE SA-312 OR SA-376 TP304 SCH. 80 - .337"		
B	(T) 3/4" H/COUPL SA-182 F304 3000# OR SA-403 WP304 S.W.		
B	(+ ) 4" PIPE SA-312 OR SA-376 TP304 SCH. 40 - .237"		
B	(H) 14" x 4" SWEEPLET SA-182 F-304 SCH. 10 - .250" x SCH. 40 - .237"		
B	(G) 14" PIPE SA-358 CL.1 OR SA-312 OR SA-376, TP-304 OR TP-316, SCH. 140, 1.25"		
A	(E) 3/4" PIPE SA-376 OR SA-312 SMLS, TP304, SCH. 160 - .219"		APPROX. 12"
A	(D) 3/4" WELDING BOSS SA-182 F304 6000# OR SA-403 WP 304 S.W.		1 REQD.
A	(C) 14" 86° ELL SA-403 WP316 SCH. 140 - 1.25"		
A	(B) 14" 68° ELL SA-403 WP316 SCH. 140 - 1.25"		
A	(A) 14" PIPE SA-376 TP316 SCH. 140 - 1.25"		

REV.	DESCRIPTION	DATE	BY	CHKD.	APPR.
6	CORRECT ITEM NUMBER OF VALVE 2ND54	9-22-78	JK	JK	JK
7	ADDED PARAGRAPH CHANGE AT VALVE 2ND54, (V.N. 17755)	10-18-78	JK	JK	JK
8	CHANGED SPECS. ON MAT. H	11-27-78	JK	JK	JK
9	ADD CONT. AND CHANGE	1-7-79	JK	JK	JK
10	DELETED 2NDP1, ADD ND2F55, 55A, 55B, AND ADD MAT. (M)	9-21-79	JK	JK	JK
11	REVISED PER V.N. # 21216	10-8-79	JK	JK	JK
12	REVISED (C) NOTE PER FIELD	10-8-79	JK	JK	JK
13	REVISED REVISION NOTE TO SHOW THAT WELDS 55A, 55B, 55C ARE ADDED PER V.N. # 21216	1-3-81	JK	JK	JK
14	REVISE TO CHANGE CONFIGURATION AT VALVE 2ND 54 & 55, ADD FLAGS & CONT. PER REV LAYOUT	11-27-81	JK	JK	JK
15	ADDED WELDS 600, 710, 603, 604, 605, 606, 607, 608, 609, 610, 611, 612, 613, 614, 615, 616, 617, 618, 619, 620, 621, 622, 623, 624, 625, 626, 627, 628, 629, 630, 631, 632, 633, 634, 635, 636, 637, 638, 639, 640, 641, 642, 643, 644, 645, 646, 647, 648, 649, 650, 651, 652, 653, 654, 655, 656, 657, 658, 659, 660, 661, 662, 663, 664, 665, 666, 667, 668, 669, 670, 671, 672, 673, 674, 675, 676, 677, 678, 679, 680, 681, 682, 683, 684, 685, 686, 687, 688, 689, 690, 691, 692, 693, 694, 695, 696, 697, 698, 699, 700, 701, 702, 703, 704, 705, 706, 707, 708, 709, 710, 711, 712, 713, 714, 715, 716, 717, 718, 719, 720, 721, 722, 723, 724, 725, 726, 727, 728, 729, 730, 731, 732, 733, 734, 735, 736, 737, 738, 739, 740, 741, 742, 743, 744, 745, 746, 747, 748, 749, 750, 751, 752, 753, 754, 755, 756, 757, 758, 759, 760, 761, 762, 763, 764, 765, 766, 767, 768, 769, 770, 771, 772, 773, 774, 775, 776, 777, 778, 779, 780, 781, 782, 783, 784, 785, 786, 787, 788, 789, 790, 791, 792, 793, 794, 795, 796, 797, 798, 799, 800, 801, 802, 803, 804, 805, 806, 807, 808, 809, 810, 811, 812, 813, 814, 815, 816, 817, 818, 819, 820, 821, 822, 823, 824, 825, 826, 827, 828, 829, 830, 831, 832, 833, 834, 835, 836, 837, 838, 839, 840, 841, 842, 843, 844, 845, 846, 847, 848, 849, 850, 851, 852, 853, 854, 855, 856, 857, 858, 859, 860, 861, 862, 863, 864, 865, 866, 867, 868, 869, 870, 871, 872, 873, 874, 875, 876, 877, 878, 879, 880, 881, 882, 883, 884, 885, 886, 887, 888, 889, 890, 891, 892, 893, 894, 895, 896, 897, 898, 899, 900, 901, 902, 903, 904, 905, 906, 907, 908, 909, 910, 911, 912, 913, 914, 915, 916, 917, 918, 919, 920, 921, 922, 923, 924, 925, 926, 927, 928, 929, 930, 931, 932, 933, 934, 935, 936, 937, 938, 939, 940, 941, 942, 943, 944, 945, 946, 947, 948, 949, 950, 951, 952, 953, 954, 955, 956, 957, 958, 959, 960, 961, 962, 963, 964, 965, 966, 967, 968, 969, 970, 971, 972, 973, 974, 975, 976, 977, 978, 979, 980, 981, 982, 983, 984, 985, 986, 987, 988, 989, 990, 991, 992, 993, 994, 995, 996, 997, 998, 999, 1000				
16	REVISED TO CHANGE ITEM NO. OF VALVE 2ND 53	12-13-82	JK	JK	JK
17	CHANGE I.D. OF VALVE 2ND 53 FROM 1.315" TO 1.315" PER V.N. # 21216	1-3-81	JK	JK	JK
18	14" 0" ON WAS 84" 0" 0"	1-3-81	JK	JK	JK

NOTE: (A) THIS SYMBOL DENOTES MATERIALS THAT ARE PARTS OF PREASSEMBLED SECTIONS. IT IS TO BE USED BY INSPECTOR FOR FIT-UP AND HEAT NUMBER CHECK.

\* 20 I.A.W. MDG-ES-16  
 \*# THESE WELDS RECEIVE FULL INSPECTION

SI APERTURE CARD  
 FOR INFORMATION ONLY

PDR RIDS

8903290348

