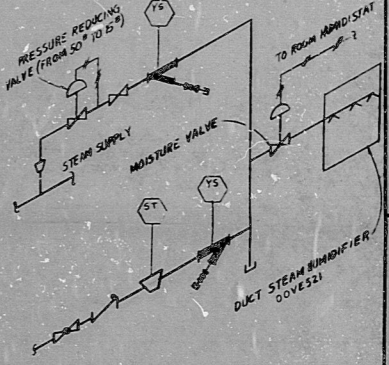


- NOTES:**
- REDUCERS IN HORIZONTAL STEAM LINES SHALL BE ECCENTRIC TYPE - FLAT ON BOTTOM.
  - SEE SHEET TABLE B FOR THE LOCATION OF THE TEMPERATURE CONTROLLER.
  - USE GATE VALVE FOR ALL STEAM SHUTOFF AND CONDENSATE LINES 8" OR LARGER. USE GLOBE VALVE FOR CONDENSATE LINES 2" OR SMALLER.
  - CAPS ON SCALE POCKETS SHALL BE SCREWED FITTINGS (THIS IS AN EXCEPTION TO THE PIPE CLASS REQ. SPECIFICATION).
  - THE PUMP'S ALTERNATOR SWITCH (X-5-3025) INCLUDES HIGH, LOW AND HIGH HIGH FLOAT LEAD SWITCH CONTACTS (SEE REFERENCES # 16, 15 AND 16 ON SHEET 1). AUTOMATIC AIR VENTS SHALL BE ARMSTRONG TYPE 30 AIR INT. OR EQUIVALENT FIELD PURCHASES.



**BECHTEL**  
SAN FRANCISCO  
PLANT HEATING  
M-96-0 6 OF 6

**RIDS**

8307270196

