

△ - DENOTES MATERIAL THAT IS PART OF A PRE-ASSEMBLED SECTION TO BE USED BY INSPECTOR FOR FIT UP & HEAT NOX CHECK ONLY.

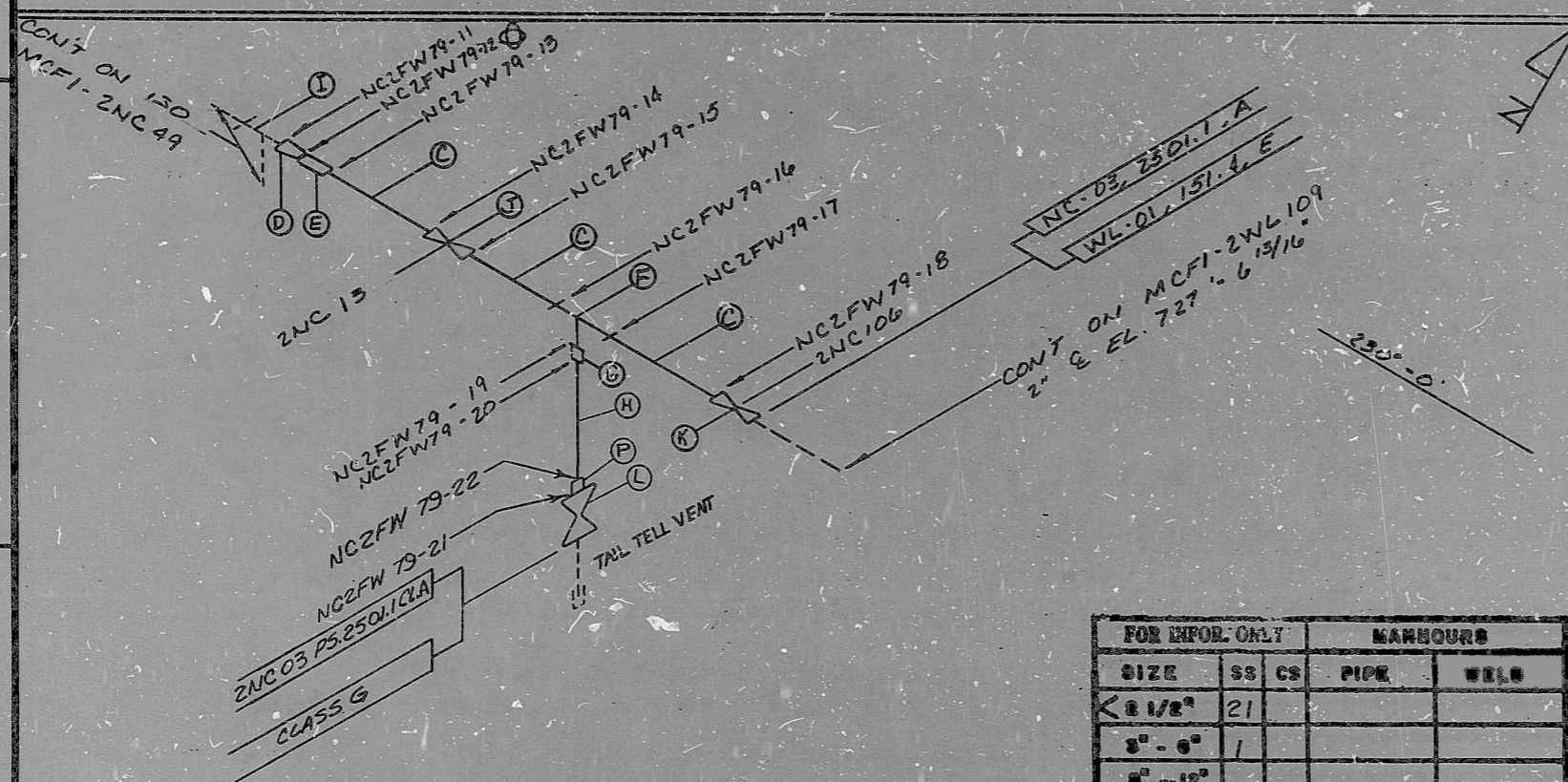
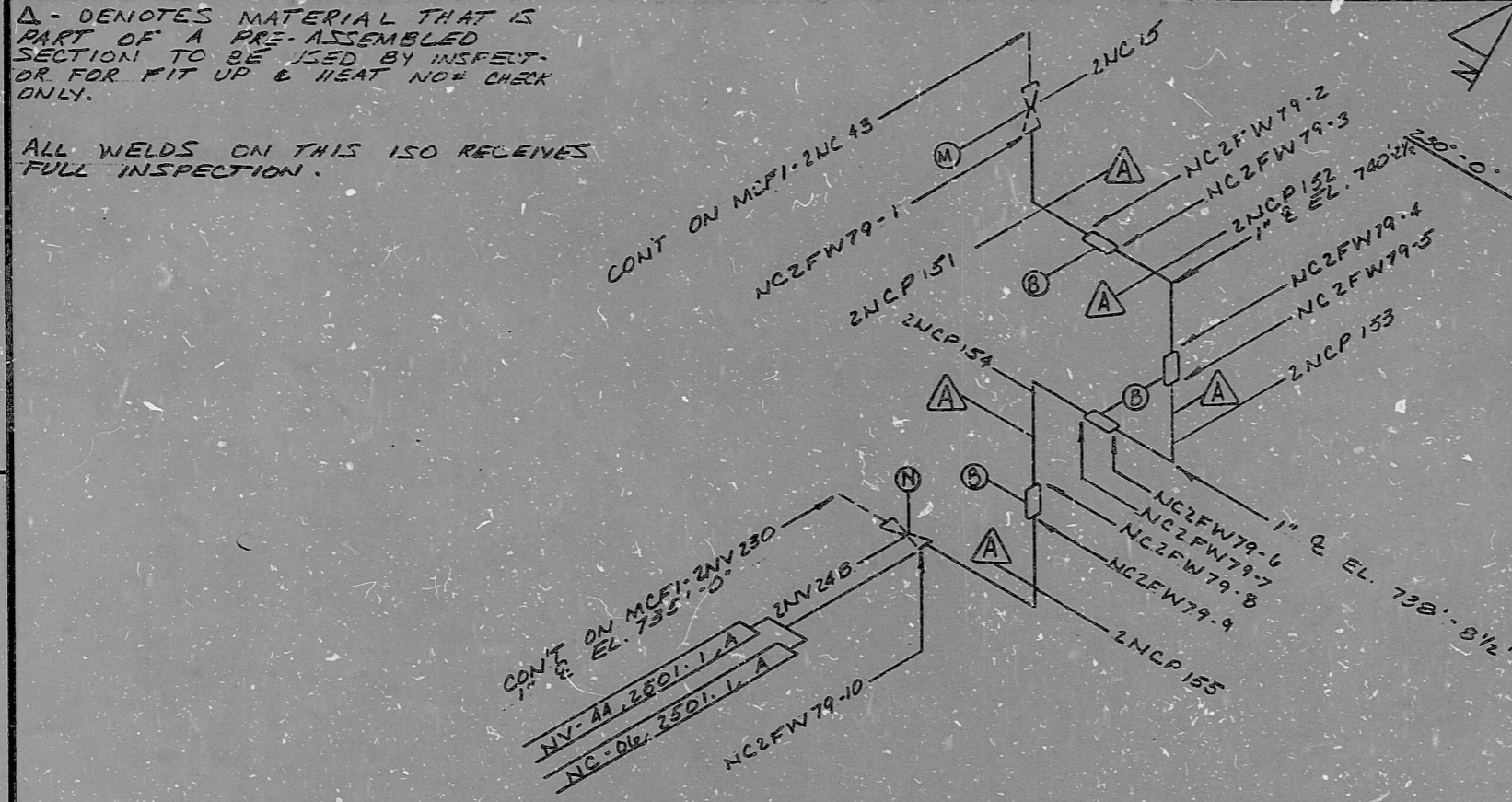
ALL WELDS ON THIS ISO RECEIVES FULL INSPECTION.

D

C

B

A



TELL-TALE TO BE INSTALLED I.A.W. MDG-ES-10  
 ALL WELDS ON THIS ISO RECEIVES FULL INSPECTION.  
 ⊙ - DENOTES WELD TO BE MADE I.A.W. MDG-ES-16

FOR INFOR. ONLY		MANHOURS	
SIZE	SS CS	PIPE	WELD
< 8 1/2"	21		
8" - 6"	1		
6" - 12"			
14" - 20"			
> 20"			
TOTALS		22	
TOTAL RT WELDS		1	
TOTAL PT WELDS		21	

INSERVICE INSPECTION

REVISIONS BLOCK				
GRID	REV. NO.	DESCRIPTION	DATE	APPROV. DATE
	0	REL. FOR CONSTRUCTION	TCD	7-30-79
	1	CHANGE SPECS FOR MAT(H)	SEL	1-4-80
	2	ADDED MAT. "P" & WELD 22	RFB	1-8-80
	3	ADDED Q.A. CONDITION I AND TAIL TELL VENT TO VALVE 2NC-115	RLR	7-28-82

FOR INFORMATION ONLY

SI APERTURE CARD

ITEM	SIZE	DES.	SPEC./GRADE	SCH./RATE	REMARKS
(P)	1 1/2"	RED. INS.	SA-182/F-304	SA-403/WP304	6000 # F.S.S.W.
(N)	1"	VLV.	2NV 24 B	IN. 9J-38	
(M)	1"	VLV.	2NC 15	IN. 9J-38	
(L)	1/2"	VLV.	2NC 115	IN. 9J-26	
(K)	2"	VLV.	2NC106	IN. 9J-16	
(J)	2"	VLV.	2NC 13	IN. 9J-16	
(I)	3"	TEE	SA-403/WP304	SCH. 160	SMLS
(H)	1/2"	PIPE	SA-312, TP-304	SA-376, TP-304	SCH. 160 SMLS
(G)	2" X 1/2"	RED. INS.	SA-182 IF-304	SA-403/WP304	6000 # FS. SW
(F)	2"	TEE	SA-182 IF-304	SA-403/WP304	6000 # FS. SW
(E)	2"	FULL CLPG	SA-182 IF-304	SA-403/WP304	6000 # FS. SW
(D)	3" X 2"	CON. PED.	SA-403/WP304	SCH. 160	SMLS
(C)	2"	PIPE	SA-312 TP304	SA-376/TP304	SCH. 160 SMLS
(B)	1"	FULL CLPG	SA-182 IF-304	SA-403/WP304	6000 # FS. SW
(A)	1"	PIPE	SA-312 TP304	SA-376/TP304	SCH. 160 SMLS

BILL OF MATERIAL Q.A. Condition I

LAST WELD NO. 22 DUKE POWER COMPANY McGUIRE NUCLEAR STATION LAST FL. NO. NA

NUCLEAR SAFETY RELATED YES NO BUILDING: REACTOR ZONE: R-22

PIPE SPEC: 2501.1 SYS. SYMBOL: NC SEC. NO: 03 #06 DRAWING NO: 805 MC-2414-03, 20-02 EL: 735' C

APPLICABLE CODE: ASME SECT. III CLASS: A ISO. NO: MCF1-2NC79 REV: 3

PDR RIDS

8903290342

