

22"

17"

11"

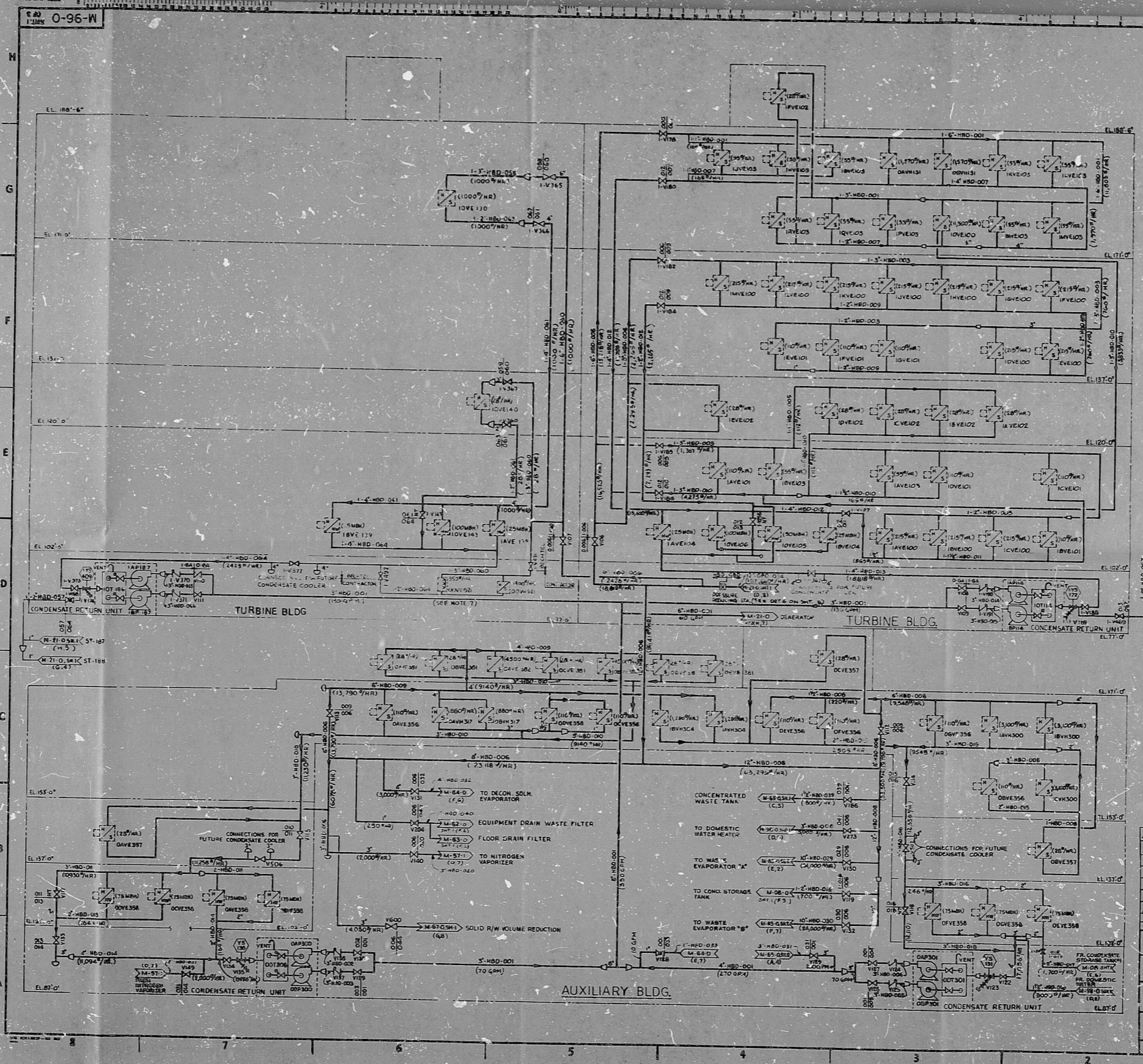
8.5"

8.5"

11"

17"

22"



SYSTEM GA

REFERENCE DRAWINGS	CONTROL SYSTEM
1 CONDENSATE RETURN UNIT	M-64-D
2 CONDENSATE RETURN UNIT	M-63-D
3 CONDENSATE RETURN UNIT	M-62-D
4 AUXILIARY STEAM	M-210
5 AUX. BLDG. SERVICE AREA CONTROL	M-850
6 CONTINUOUS AIR CONTROL	M-570
7 LIQUID RADIATION WASTE PROCESS	M-660
8 LIQUID RADIATION WASTE PROCESS	M-850
9 TURBINE BLDG. SUPPLY CONTROL	M-851
10 REACTOR BLDG. SUPPLY CONTROL	M-851
11 AUX. BLDG. SERVICE AREA CONTROL	M-850
12 LIQUID RADIATION WASTE PROCESS	M-850
13 LIQUID RADIATION WASTE PROCESS	M-850
14 LIQUID RADIATION WASTE PROCESS	M-850
15 LIQUID RADIATION WASTE PROCESS	M-850
16 LIQUID RADIATION WASTE PROCESS	M-850
17 LIQUID RADIATION WASTE PROCESS	M-850
18 LIQUID RADIATION WASTE PROCESS	M-850
19 LIQUID RADIATION WASTE PROCESS	M-850
20 LIQUID RADIATION WASTE PROCESS	M-850
21 LIQUID RADIATION WASTE PROCESS	M-850
22 LIQUID RADIATION WASTE PROCESS	M-850
23 LIQUID RADIATION WASTE PROCESS	M-850
24 LIQUID RADIATION WASTE PROCESS	M-850
25 LIQUID RADIATION WASTE PROCESS	M-850
26 LIQUID RADIATION WASTE PROCESS	M-850
27 LIQUID RADIATION WASTE PROCESS	M-850
28 LIQUID RADIATION WASTE PROCESS	M-850
29 LIQUID RADIATION WASTE PROCESS	M-850
30 LIQUID RADIATION WASTE PROCESS	M-850
31 LIQUID RADIATION WASTE PROCESS	M-850
32 LIQUID RADIATION WASTE PROCESS	M-850
33 LIQUID RADIATION WASTE PROCESS	M-850
34 LIQUID RADIATION WASTE PROCESS	M-850
35 LIQUID RADIATION WASTE PROCESS	M-850
36 LIQUID RADIATION WASTE PROCESS	M-850
37 LIQUID RADIATION WASTE PROCESS	M-850
38 LIQUID RADIATION WASTE PROCESS	M-850
39 LIQUID RADIATION WASTE PROCESS	M-850
40 LIQUID RADIATION WASTE PROCESS	M-850
41 LIQUID RADIATION WASTE PROCESS	M-850
42 LIQUID RADIATION WASTE PROCESS	M-850
43 LIQUID RADIATION WASTE PROCESS	M-850
44 LIQUID RADIATION WASTE PROCESS	M-850
45 LIQUID RADIATION WASTE PROCESS	M-850
46 LIQUID RADIATION WASTE PROCESS	M-850
47 LIQUID RADIATION WASTE PROCESS	M-850
48 LIQUID RADIATION WASTE PROCESS	M-850
49 LIQUID RADIATION WASTE PROCESS	M-850
50 LIQUID RADIATION WASTE PROCESS	M-850
51 LIQUID RADIATION WASTE PROCESS	M-850
52 LIQUID RADIATION WASTE PROCESS	M-850
53 LIQUID RADIATION WASTE PROCESS	M-850
54 LIQUID RADIATION WASTE PROCESS	M-850
55 LIQUID RADIATION WASTE PROCESS	M-850
56 LIQUID RADIATION WASTE PROCESS	M-850
57 LIQUID RADIATION WASTE PROCESS	M-850
58 LIQUID RADIATION WASTE PROCESS	M-850
59 LIQUID RADIATION WASTE PROCESS	M-850
60 LIQUID RADIATION WASTE PROCESS	M-850
61 LIQUID RADIATION WASTE PROCESS	M-850
62 LIQUID RADIATION WASTE PROCESS	M-850
63 LIQUID RADIATION WASTE PROCESS	M-850
64 LIQUID RADIATION WASTE PROCESS	M-850
65 LIQUID RADIATION WASTE PROCESS	M-850
66 LIQUID RADIATION WASTE PROCESS	M-850
67 LIQUID RADIATION WASTE PROCESS	M-850
68 LIQUID RADIATION WASTE PROCESS	M-850
69 LIQUID RADIATION WASTE PROCESS	M-850
70 LIQUID RADIATION WASTE PROCESS	M-850
71 LIQUID RADIATION WASTE PROCESS	M-850
72 LIQUID RADIATION WASTE PROCESS	M-850
73 LIQUID RADIATION WASTE PROCESS	M-850
74 LIQUID RADIATION WASTE PROCESS	M-850
75 LIQUID RADIATION WASTE PROCESS	M-850
76 LIQUID RADIATION WASTE PROCESS	M-850
77 LIQUID RADIATION WASTE PROCESS	M-850
78 LIQUID RADIATION WASTE PROCESS	M-850
79 LIQUID RADIATION WASTE PROCESS	M-850
80 LIQUID RADIATION WASTE PROCESS	M-850
81 LIQUID RADIATION WASTE PROCESS	M-850
82 LIQUID RADIATION WASTE PROCESS	M-850
83 LIQUID RADIATION WASTE PROCESS	M-850
84 LIQUID RADIATION WASTE PROCESS	M-850
85 LIQUID RADIATION WASTE PROCESS	M-850
86 LIQUID RADIATION WASTE PROCESS	M-850
87 LIQUID RADIATION WASTE PROCESS	M-850
88 LIQUID RADIATION WASTE PROCESS	M-850
89 LIQUID RADIATION WASTE PROCESS	M-850
90 LIQUID RADIATION WASTE PROCESS	M-850
91 LIQUID RADIATION WASTE PROCESS	M-850
92 LIQUID RADIATION WASTE PROCESS	M-850
93 LIQUID RADIATION WASTE PROCESS	M-850
94 LIQUID RADIATION WASTE PROCESS	M-850
95 LIQUID RADIATION WASTE PROCESS	M-850
96 LIQUID RADIATION WASTE PROCESS	M-850
97 LIQUID RADIATION WASTE PROCESS	M-850
98 LIQUID RADIATION WASTE PROCESS	M-850
99 LIQUID RADIATION WASTE PROCESS	M-850
100 LIQUID RADIATION WASTE PROCESS	M-850

- ### NOTES:
- DRAINS AND VENTS NOT SHOWN ON THIS SHEET, SEE SHEET #2 FOR TABULATION.
 - LOW POINT AND END OF MAIN DRIPS NOT SHOWN ON THIS SHEET, SEE SHEET #3 FOR TABULATION.
 - ALL HEATING COILS AND UNIT HEATERS ARE SIZED WITH THEIR RESPECTIVE AREA HVAC SYSTEM.
 - FLOW RATES INDICATED ON THIS P&ID REPRESENT MAXIMUM REQUIREMENTS.
 - THIS P&ID CONTAINS SYSTEMS OF PORTIONS OF SYSTEMS:
 - TC - TURBINE BLDG. SOLID R/W AREA
 - GA - PLANT HEATING
 - GC - TURBINE BLDG. HVAC
 - GH - AUX. BLDG. WASTE AREA HVAC
 - GI - AUX. BLDG. CONTROL AREA HVAC
 - GL - AUX. BLDG. WASTE AREA HVAC
 - GR - REACTOR BUILDING HVAC
 - GS - TURBINE BLDG. HVAC
 - GT - GUARDHOUSE
 - GA - AUXILIARY STEAM
 - GC - ADMINISTRATION FACILITY
 - FOR TYPICAL INSTALLATION DETAILS SEE SHT 3 AND FOR SPECIFIC PIPE SIZES SEE SHT 2.
 - ALL PIPE, VALVES & COMPONENTS ASSOCIATED WITH CONDENSATE RETURN UNIT ARE TO BE PROVIDED AND INSTALLED BY ADMINISTRATION FACILITY CONTRACTOR.

PRO APERTURE CARD

REVISIONS		DATE	BY	CHKD	APP'D
1	ADD ODDVES2 & NOTE 7				
2	REVISOR COMMENTS				
3	REVISOR COMMENTS				
4	REVISOR COMMENTS				
5	REVISOR COMMENTS				
6	REVISOR COMMENTS				
7	REVISOR COMMENTS				
8	REVISOR COMMENTS				
9	REVISOR COMMENTS				
10	REVISOR COMMENTS				
11	REVISOR COMMENTS				
12	REVISOR COMMENTS				
13	REVISOR COMMENTS				
14	REVISOR COMMENTS				
15	REVISOR COMMENTS				
16	REVISOR COMMENTS				
17	REVISOR COMMENTS				
18	REVISOR COMMENTS				
19	REVISOR COMMENTS				
20	REVISOR COMMENTS				
21	REVISOR COMMENTS				
22	REVISOR COMMENTS				
23	REVISOR COMMENTS				
24	REVISOR COMMENTS				
25	REVISOR COMMENTS				
26	REVISOR COMMENTS				
27	REVISOR COMMENTS				
28	REVISOR COMMENTS				
29	REVISOR COMMENTS				
30	REVISOR COMMENTS				
31	REVISOR COMMENTS				
32	REVISOR COMMENTS				
33	REVISOR COMMENTS				
34	REVISOR COMMENTS				
35	REVISOR COMMENTS				
36	REVISOR COMMENTS				
37	REVISOR COMMENTS				
38	REVISOR COMMENTS				
39	REVISOR COMMENTS				
40	REVISOR COMMENTS				
41	REVISOR COMMENTS				
42	REVISOR COMMENTS				
43	REVISOR COMMENTS				
44	REVISOR COMMENTS				
45	REVISOR COMMENTS				
46	REVISOR COMMENTS				
47	REVISOR COMMENTS				
48	REVISOR COMMENTS				
49	REVISOR COMMENTS				
50	REVISOR COMMENTS				
51	REVISOR COMMENTS				
52	REVISOR COMMENTS				
53	REVISOR COMMENTS				
54	REVISOR COMMENTS				
55	REVISOR COMMENTS				
56	REVISOR COMMENTS				
57	REVISOR COMMENTS				
58	REVISOR COMMENTS				
59	REVISOR COMMENTS				
60	REVISOR COMMENTS				
61	REVISOR COMMENTS				
62	REVISOR COMMENTS				
63	REVISOR COMMENTS				
64	REVISOR COMMENTS				
65	REVISOR COMMENTS				
66	REVISOR COMMENTS				
67	REVISOR COMMENTS				
68	REVISOR COMMENTS				
69	REVISOR COMMENTS				
70	REVISOR COMMENTS				
71	REVISOR COMMENTS				
72	REVISOR COMMENTS				
73	REVISOR COMMENTS				
74	REVISOR COMMENTS				
75	REVISOR COMMENTS				
76	REVISOR COMMENTS				
77	REVISOR COMMENTS				
78	REVISOR COMMENTS				
79	REVISOR COMMENTS				
80	REVISOR COMMENTS				
81	REVISOR COMMENTS				
82	REVISOR COMMENTS				
83	REVISOR COMMENTS				
84	REVISOR COMMENTS				
85	REVISOR COMMENTS				
86	REVISOR COMMENTS				
87	REVISOR COMMENTS				
88	REVISOR COMMENTS				
89	REVISOR COMMENTS				
90	REVISOR COMMENTS				
91	REVISOR COMMENTS				
92	REVISOR COMMENTS				
93	REVISOR COMMENTS				
94	REVISOR COMMENTS				
95	REVISOR COMMENTS				
96	REVISOR COMMENTS				
97	REVISOR COMMENTS				
98	REVISOR COMMENTS				
99	REVISOR COMMENTS				
100	REVISOR COMMENTS				

22"

17"

11"

8.5"

8.5"

11"

17"

22"

RIDS

Q307270191

