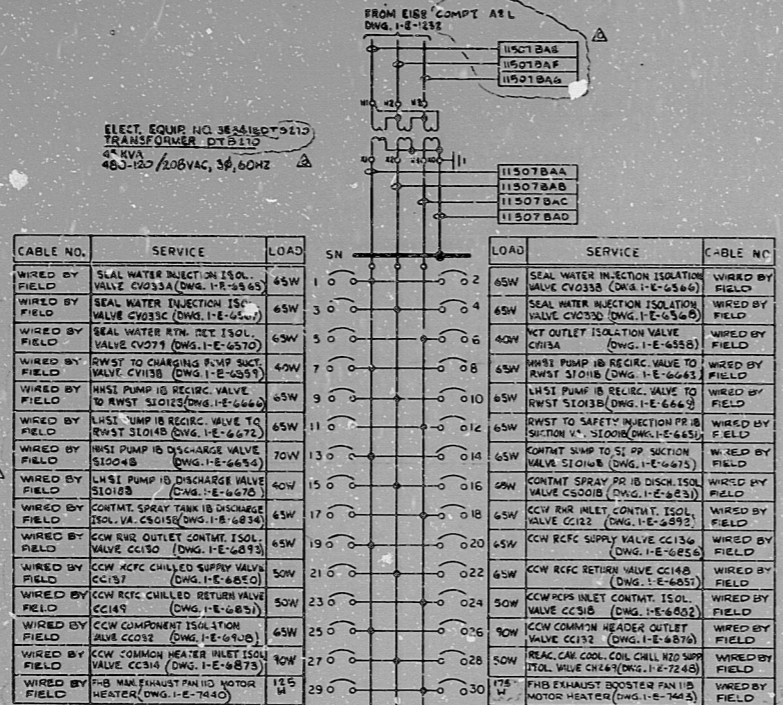
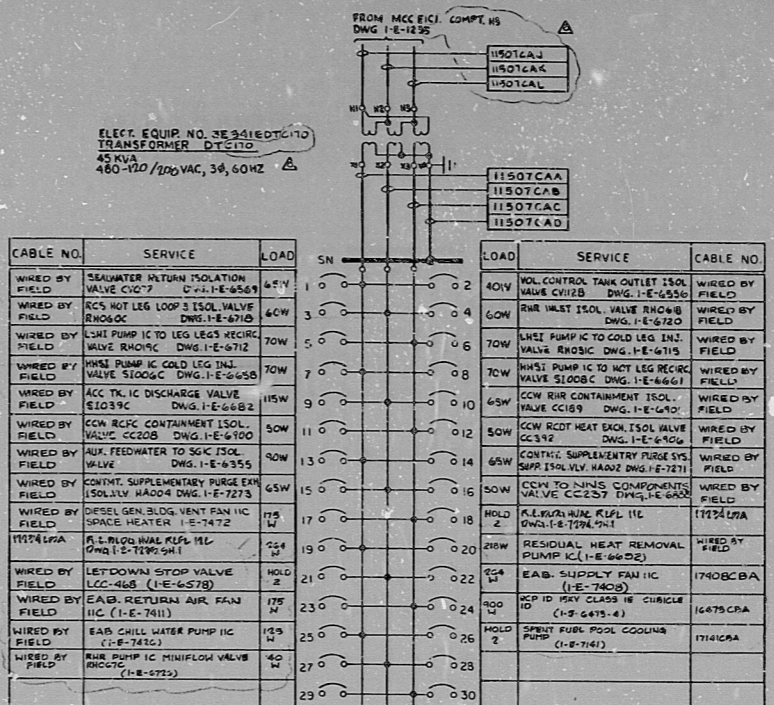


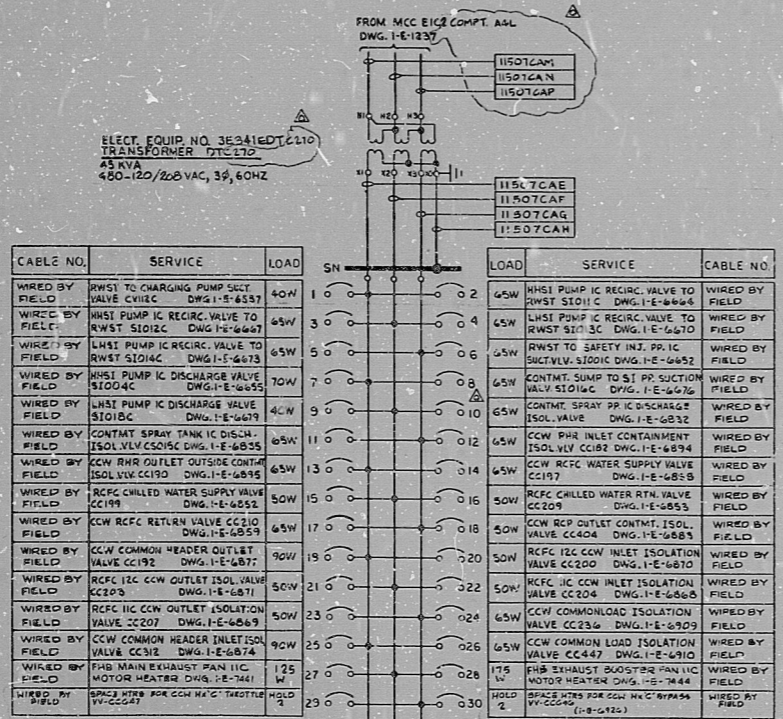
0-2091-3-1



CABLE NO.	SERVICE	LOAD	SN	LOAD	SERVICE	CABLE NO.
WIRED BY FIELD	SEAL WATER INJECTION ISOL. VALVE CV033A (DWG. 1-E-6563)	45W	1 0	0 2	SEAL WATER INJECTION ISOLATION VALVE CV033B (DWG. 1-E-6564)	WIRED BY FIELD
WIRED BY FIELD	SEAL WATER INJECTION ISOL. VALVE CV033C (DWG. 1-E-6565)	45W	3 0	0 4	SEAL WATER INJECTION ISOLATION VALVE CV033D (DWG. 1-E-6566)	WIRED BY FIELD
WIRED BY FIELD	SEAL WATER RTN. RET. ISOL. VALVE CV037 (DWG. 1-E-6570)	60W	5 0	0 6	WT OUTLET ISOLATION VALVE CV038 (DWG. 1-E-6568)	WIRED BY FIELD
WIRED BY FIELD	RWST TO CHARGING PUMP SUCT. VALVE CV103B (DWG. 1-E-6585)	40W	7 0	0 8	WT1 PUMP IC RECIRC. VALVE TO RWST S1014B (DWG. 1-E-6643)	WIRED BY FIELD
WIRED BY FIELD	WT1 PUMP IC RECIRC. VALVE TO RWST S1012 (DWG. 1-E-6642)	40W	9 0	0 10	WT1 PUMP IC RECIRC. VALVE TO RWST S1013B (DWG. 1-E-6644)	WIRED BY FIELD
WIRED BY FIELD	WT1 PUMP IC DISCHARGE VALVE TO RWST S1014C (DWG. 1-E-6645)	40W	11 0	0 12	RWST TO SAFETY INJECTION PP. ISOL. VALVE CV039 (DWG. 1-E-6586)	WIRED BY FIELD
WIRED BY FIELD	WT1 PUMP IC DISCHARGE VALVE TO RWST S1014D (DWG. 1-E-6646)	40W	13 0	0 14	WT1 PUMP TO ST. PP. SUCTION VALVE S1014R (DWG. 1-E-6673)	WIRED BY FIELD
WIRED BY FIELD	WT1 PUMP IC DISCHARGE VALVE TO RWST S1014E (DWG. 1-E-6647)	40W	15 0	0 16	CONTAM. SPRAY PP. ISOL. VALVE CV040 (DWG. 1-E-6587)	WIRED BY FIELD
WIRED BY FIELD	CONTAM. SPRAY TANK ISOL. VALVE CV041 (DWG. 1-E-6588)	65W	17 0	0 18	CCW RTR. INLET CONTAM. ISOL. VALVE CC192 (DWG. 1-E-6871)	WIRED BY FIELD
WIRED BY FIELD	CCW RTR. OUTLET CONTAM. ISOL. VALVE CC193 (DWG. 1-E-6872)	65W	19 0	0 20	CCW RTR. SUPPLY VALVE CC197 (DWG. 1-E-6875)	WIRED BY FIELD
WIRED BY FIELD	CCW RTR. CHILLED WATER SUPPLY VALVE CC198 (DWG. 1-E-6876)	50W	21 0	0 22	CCW RTR. RETURN VALVE CC199 (DWG. 1-E-6877)	WIRED BY FIELD
WIRED BY FIELD	CCW RTR. CHILLED RETURN VALVE CC199 (DWG. 1-E-6877)	50W	23 0	0 24	CCW COMMON HEATER INLET ISOL. VALVE CC201 (DWG. 1-E-6879)	WIRED BY FIELD
WIRED BY FIELD	CCW COMMON HEATER ISOL. VALVE CC202 (DWG. 1-E-6880)	65W	25 0	0 26	CCW COMMON HEATER OUTLET ISOL. VALVE CC203 (DWG. 1-E-6881)	WIRED BY FIELD
WIRED BY FIELD	CCW COMMON HEATER ISOL. VALVE CC204 (DWG. 1-E-6882)	65W	27 0	0 28	F1B MAIN EXHAUST PAN IC MOTOR HEATER (DWG. 1-E-7440)	WIRED BY FIELD
WIRED BY FIELD	F1B MAIN EXHAUST PAN IC MOTOR HEATER (DWG. 1-E-7440)	125 W	29 0	0 30	F1B EXHAUST BOOSTER PAN IC MOTOR HEATER (DWG. 1-E-7441)	WIRED BY FIELD



CABLE NO.	SERVICE	LOAD	SN	LOAD	SERVICE	CABLE NO.
WIRED BY FIELD	SEAWATER RETURN ISOLATION VALVE CV07 (DWG. 1-E-6569)	45W	1 0	0 2	WT1 PUMP IC TO HOT LEG RECIRC. VALVE S1008C (DWG. 1-E-6461)	WIRED BY FIELD
WIRED BY FIELD	RCS HOT LEG LOOP 3 ISOL. VALVE EN006C (DWG. 1-E-6749)	60W	3 0	0 4	WT1 PUMP IC TO HOT LEG RECIRC. VALVE S1008D (DWG. 1-E-6462)	WIRED BY FIELD
WIRED BY FIELD	WT1 PUMP IC TO HOT LEG RECIRC. VALVE S1008E (DWG. 1-E-6463)	60W	5 0	0 6	WT1 PUMP IC TO HOT LEG RECIRC. VALVE S1008F (DWG. 1-E-6464)	WIRED BY FIELD
WIRED BY FIELD	WT1 PUMP IC TO HOT LEG RECIRC. VALVE S1008G (DWG. 1-E-6465)	60W	7 0	0 8	WT1 PUMP IC TO HOT LEG RECIRC. VALVE S1008H (DWG. 1-E-6466)	WIRED BY FIELD
WIRED BY FIELD	WT1 PUMP IC TO HOT LEG RECIRC. VALVE S1008I (DWG. 1-E-6467)	60W	9 0	0 10	WT1 PUMP IC TO HOT LEG RECIRC. VALVE S1008J (DWG. 1-E-6468)	WIRED BY FIELD
WIRED BY FIELD	WT1 PUMP IC TO HOT LEG RECIRC. VALVE S1008K (DWG. 1-E-6469)	60W	11 0	0 12	WT1 PUMP IC TO HOT LEG RECIRC. VALVE S1008L (DWG. 1-E-6470)	WIRED BY FIELD
WIRED BY FIELD	WT1 PUMP IC TO HOT LEG RECIRC. VALVE S1008M (DWG. 1-E-6471)	60W	13 0	0 14	WT1 PUMP IC TO HOT LEG RECIRC. VALVE S1008N (DWG. 1-E-6472)	WIRED BY FIELD
WIRED BY FIELD	WT1 PUMP IC TO HOT LEG RECIRC. VALVE S1008O (DWG. 1-E-6473)	60W	15 0	0 16	WT1 PUMP IC TO HOT LEG RECIRC. VALVE S1008P (DWG. 1-E-6474)	WIRED BY FIELD
WIRED BY FIELD	WT1 PUMP IC TO HOT LEG RECIRC. VALVE S1008Q (DWG. 1-E-6475)	60W	17 0	0 18	WT1 PUMP IC TO HOT LEG RECIRC. VALVE S1008R (DWG. 1-E-6476)	WIRED BY FIELD
WIRED BY FIELD	WT1 PUMP IC TO HOT LEG RECIRC. VALVE S1008S (DWG. 1-E-6477)	60W	19 0	0 20	WT1 PUMP IC TO HOT LEG RECIRC. VALVE S1008T (DWG. 1-E-6478)	WIRED BY FIELD
WIRED BY FIELD	WT1 PUMP IC TO HOT LEG RECIRC. VALVE S1008U (DWG. 1-E-6479)	60W	21 0	0 22	WT1 PUMP IC TO HOT LEG RECIRC. VALVE S1008V (DWG. 1-E-6480)	WIRED BY FIELD
WIRED BY FIELD	WT1 PUMP IC TO HOT LEG RECIRC. VALVE S1008W (DWG. 1-E-6481)	60W	23 0	0 24	WT1 PUMP IC TO HOT LEG RECIRC. VALVE S1008X (DWG. 1-E-6482)	WIRED BY FIELD
WIRED BY FIELD	WT1 PUMP IC TO HOT LEG RECIRC. VALVE S1008Y (DWG. 1-E-6483)	60W	25 0	0 26	WT1 PUMP IC TO HOT LEG RECIRC. VALVE S1008Z (DWG. 1-E-6484)	WIRED BY FIELD
WIRED BY FIELD	WT1 PUMP IC TO HOT LEG RECIRC. VALVE S1009 (DWG. 1-E-6485)	60W	27 0	0 28	WT1 PUMP IC TO HOT LEG RECIRC. VALVE S1010 (DWG. 1-E-6486)	WIRED BY FIELD
WIRED BY FIELD	WT1 PUMP IC TO HOT LEG RECIRC. VALVE S1011 (DWG. 1-E-6487)	60W	29 0	0 30		



CABLE NO.	SERVICE	LOAD	SN	LOAD	SERVICE	CABLE NO.
WIRED BY FIELD	RWST TO CHARGING PUMP SUCT. VALVE CV103C (DWG. 1-E-6585)	40W	1 0	0 2	WT1 PUMP IC RECIRC. VALVE TO RWST S1011C (DWG. 1-E-6644)	WIRED BY FIELD
WIRED BY FIELD	WT1 PUMP IC RECIRC. VALVE TO RWST S1011B (DWG. 1-E-6643)	40W	3 0	0 4	WT1 PUMP IC RECIRC. VALVE TO RWST S1011D (DWG. 1-E-6645)	WIRED BY FIELD
WIRED BY FIELD	WT1 PUMP IC RECIRC. VALVE TO RWST S1011E (DWG. 1-E-6646)	40W	5 0	0 6	WT1 PUMP IC RECIRC. VALVE TO RWST S1011F (DWG. 1-E-6647)	WIRED BY FIELD
WIRED BY FIELD	WT1 PUMP IC RECIRC. VALVE TO RWST S1011G (DWG. 1-E-6648)	40W	7 0	0 8	WT1 PUMP IC RECIRC. VALVE TO RWST S1011H (DWG. 1-E-6649)	WIRED BY FIELD
WIRED BY FIELD	WT1 PUMP IC RECIRC. VALVE TO RWST S1011I (DWG. 1-E-6650)	40W	9 0	0 10	WT1 PUMP IC RECIRC. VALVE TO RWST S1011J (DWG. 1-E-6651)	WIRED BY FIELD
WIRED BY FIELD	WT1 PUMP IC RECIRC. VALVE TO RWST S1011K (DWG. 1-E-6652)	40W	11 0	0 12	WT1 PUMP IC RECIRC. VALVE TO RWST S1011L (DWG. 1-E-6653)	WIRED BY FIELD
WIRED BY FIELD	WT1 PUMP IC RECIRC. VALVE TO RWST S1011M (DWG. 1-E-6654)	40W	13 0	0 14	WT1 PUMP IC RECIRC. VALVE TO RWST S1011N (DWG. 1-E-6655)	WIRED BY FIELD
WIRED BY FIELD	WT1 PUMP IC RECIRC. VALVE TO RWST S1011O (DWG. 1-E-6656)	40W	15 0	0 16	WT1 PUMP IC RECIRC. VALVE TO RWST S1011P (DWG. 1-E-6657)	WIRED BY FIELD
WIRED BY FIELD	WT1 PUMP IC RECIRC. VALVE TO RWST S1011Q (DWG. 1-E-6658)	40W	17 0	0 18	WT1 PUMP IC RECIRC. VALVE TO RWST S1011R (DWG. 1-E-6659)	WIRED BY FIELD
WIRED BY FIELD	WT1 PUMP IC RECIRC. VALVE TO RWST S1011S (DWG. 1-E-6660)	40W	19 0	0 20	WT1 PUMP IC RECIRC. VALVE TO RWST S1011T (DWG. 1-E-6661)	WIRED BY FIELD
WIRED BY FIELD	WT1 PUMP IC RECIRC. VALVE TO RWST S1011U (DWG. 1-E-6662)	40W	21 0	0 22	WT1 PUMP IC RECIRC. VALVE TO RWST S1011V (DWG. 1-E-6663)	WIRED BY FIELD
WIRED BY FIELD	WT1 PUMP IC RECIRC. VALVE TO RWST S1011W (DWG. 1-E-6664)	40W	23 0	0 24	WT1 PUMP IC RECIRC. VALVE TO RWST S1011X (DWG. 1-E-6665)	WIRED BY FIELD
WIRED BY FIELD	WT1 PUMP IC RECIRC. VALVE TO RWST S1011Y (DWG. 1-E-6666)	40W	25 0	0 26	WT1 PUMP IC RECIRC. VALVE TO RWST S1011Z (DWG. 1-E-6667)	WIRED BY FIELD
WIRED BY FIELD	WT1 PUMP IC RECIRC. VALVE TO RWST S1012 (DWG. 1-E-6668)	40W	27 0	0 28	WT1 PUMP IC RECIRC. VALVE TO RWST S1013 (DWG. 1-E-6669)	WIRED BY FIELD
WIRED BY FIELD	WT1 PUMP IC RECIRC. VALVE TO RWST S1013 (DWG. 1-E-6670)	40W	29 0	0 30		

INFORMATION
THIS DOCUMENT IS
SUBJECT TO REVISION
WITHOUT NOTIFICATION
TO THE USER OF THIS
COPY

NOTES
1 ALL BREAKERS ARE 20 AMP UNLESS OTHERWISE NOTED.

REFERENCE DWGS
G-E-0105 WIRING STANDARDS & SYMBOLS

TERA APERTURE CARD

NUCLEAR SAFETY RELATED
CLASS I E

PKG:024 SUFF:102 ACT:581

REV.	DATE	DESCRIPTION	BY	CHKD	APP'D
0	02-27	REVISED FOR CONSTRUCTION	RM	HT	HT
1	10-30-79	ISSUED FOR USE	RLA	HT	HT

Brown & Root, Inc.
SOUTH TEXAS PROJECT
ELECTRICAL
PANELBOARD SCHEDULES
MCC SPACE HEATERS & MOTOR HEATERS
MCC-E1B2, E1C1, E1C2

CONTRACT NO. CR-0241 SCALE NONE
DRAWING NO. 4-E-51
1-E-1507-0

INFORMATION PRELIMINARY REVIEW USE CONSTRUCTION



BROWN & ROOT INC.
MICROFILM SERVICES

8.5"

11"

17"

8.5"

11"

17"

RIDS

8112210099

