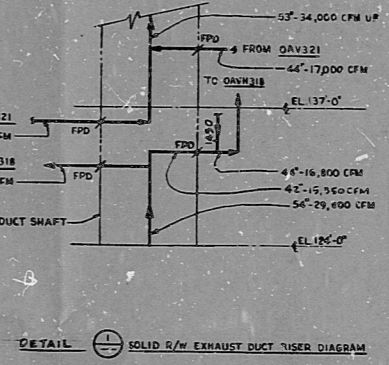


SYSTEM GH	
REFERENCE DRAWING	DECTEL PSEIG
1. AUX. BLDG. RADWASTE CONTROL DIAG. M-91-0-0	10-37-B-1
2. AUX. BLDG. RADWASTE AREA AIR FLOW DIAG. M-91-0-0	
3. AUX. BLDG. RADWASTE AREA AIR FLOW DIAG. M-91-0-0	
4. AUX. BLDG. RADWASTE AREA AIR FLOW DIAG. M-91-0-0	
5. AUX. BLDG. RADWASTE AREA AIR FLOW DIAG. M-91-0-0	

NOTES:

1. ALL DUCT IDENTIFICATION HAS THE SYSTEM DESIGNATOR O-GH UNLESS OTHERWISE NOTED.
2. THIS P410 CONTAINS SYSTEMS OR PORTIONS OF SYSTEMS:
 GH-AUXILIARY BUILDING (RADWASTE AREA) HVAC
 GH-AUXILIARY BUILDING (SERVICE AREA) HVAC
 NC-SOLID RADWASTE PROCESSING
3. FAN/BLUR USAGE IS INTERMITTENT; ITS FLOW EXHAUST FLOWER WILL RUN WHEN THE BLDG IS BEING OPERATED.
4. ALL PRESSURE CLASSIFICATION ASSIGNED TO DUCTWORK WILL BE VERIFIED WHEN FAN PERFORMANCE DATA IS MADE AVAILABLE BY SUPPLIER.



PRO
APERTURE
CARD

DECTEL SAN FRANCISCO PUBLIC SERVICE ELECTRIC AND GAS COMPANY HOPE CREEK GENERATING STATION P410 AUX BLDG RADWASTE AREA AIR FLOW DIAGRAM SHEET NO. M-91-0-0 SHEET 3 OF 3			

RIDS

8307270167

