

INSERVICE INSPECTION

REV. 6
 ISO. NO.: MCFI 2NC 16
 BUILDING: REACTOR ZONE R-22
 DUKE PIPING CLASS. ASME B*PV CODE SECT. III
 SYSTEM SYMBOL: NC - REACTOR COOLANT
 PIPING SPEC.: NC 01 PS.2501.1
 DRAWING NO.: MC 2414-03.20-00;04;06 (EL. L.C.)
 PROJECT: MC GJIRE

NO.	REVISION	DATE	DATE	DATE	DATE
4	REVISE TO CHANGE FLAGS AT VALUES 2NC 00 & 2NC 157 PER LAYOUT	2-10-81	2-10-81	3-9-81	
3	REVISED TO ADD CONTINUATION	2-10-81	2-10-81	2-10-81	
2	ADDED FAB SHOP NOTE	2-10-81	2-10-81	2-10-81	
1	DELETE WELDS 2 & 5	1-17-81	1-17-81	1-17-81	
0	RELEASE FOR CONSTRUCTION	8-27-80	8-27-80	8-27-80	

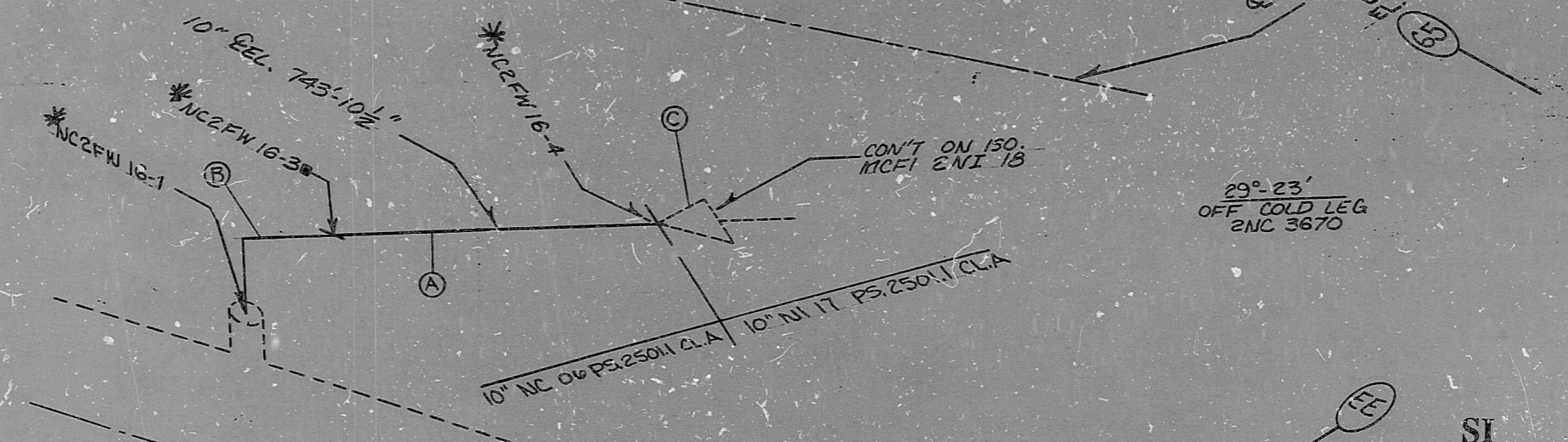
BILL OF MATERIAL

ITEM	SIZE	DES.	SPEC./GRADE	SPEC./GRADE	SCH./RATE	MISC.
(2)	10"	PIPE	SA-376/TP316	N/A	140	1,000' WL., SMLS.
(2)	10"	90° ELBOW	SA-403/WR316	N/A	140	1,000' WL., SMLS.
(2)	10"	VALVE	2 NI 60	ITEM #4J-G	NA	N/A
(2)	6"	PIPE	SA-376/TP304	N/A	160	.719" WL., SMLS.
(2)	6"	45° ELBOW	SA-403/WR304	N/A	160	.719" WL., SMLS.
(2)	6"	68° ELBOW	SA-403/WR304	N/A	160	.719" WL., SMLS.
(2)	6"	VALVE	2 NI 157	ITEM #4J-D8	N/A	N/A

*FIELD WELD MADE IN FAB SHOP
 *DENOTES THAT THE FLUSH WELDS ARE MADE IN AW CP-891

LAST WELD NO. USED 9

REACTOR COOLANT
 LEG TO LEG
 10" - 740' - 22"



29° 23'
 OFF COLD LEG
 2NC 3670

FOR INFORMATION ONLY

NO.	REVISION	DATE	DATE	DATE
6	ADDED NOTE FOR WELD 1, 3, & 4 R/WK 122 EDT FOR CP-891	10-2-81	10-2-81	10-2-81
5	REVISED TO SHOW MAT. (6)	8-27-80	8-27-80	8-27-80
	DOTTED IN ADD QA. CONDITION I	10-2-81	10-2-81	10-2-81

PDR RIDS

8903290240

