

5	ADDED	CCNT	2 NC 15	INSERVICE	INSPECTION	REV. 11
4	REVISE	NOTE (FAB SHOP WELD) FROM WELD 17	ISO NO: MCFI-2 NC 15	BUILDING: REACTOR ZONE R-22		
3	ADD	SYMBOL TO FIELD WELDS MADE IN FAB SHOP	DUKE PIPING CLASS: A-ASME B.P.V. CODE SECT. III	SYSTEM SYMBOL: NC-REACTOR COOLANT		
2	REVISED	SPECS ON MAT. 'F' PER PIPING SPEC.	PIPING SPEC: NC 06 PS-2501.1	DRAWING NO: MC 2414-03.20-00; 01 EL. 725'-0"		
1	DELETE	WELD NCFW 15-24 PER LAYOUT	PROJECT	MCGUIRE		
0	RELEASE	FAR CONSTRUCTION VU # 16717	ORIG. CHKO. APPR.	DATE		
NO	REVISION	G.A. CONDITION 1	DATE	DATE		

ITEM	SIZE	DESC.	SPEC./GRADE	SPEC./GRADE	SCH./RATE	MISC.
A	6"	PIPE	SA-316/TP304	NA	SCH. 160	.719" WL. THK., SMLS.
B	6"	90° ELL.	SA-316/TP304	NA	SCH. 160	.719" WL. THK., SMLS.
C	6"	TEE	SA-403/MP304	NA	SCH. 160	.719" WL. THK., SMLS.
D	6" x 4"	CONC. RED.	SA-403/MP304	NA	SCH. 160	.719" x .531" WL. THK., SMLS.
E	4"	PIPE	SA-316/TP304	NA	SCH. 160	.531" WL. THK., SMLS.
F	4"	90° ELL.	SA-403/MP304	NA	SCH. 160	.531" WL. THK., SMLS.
G	6" x 3"	RED. TEE	SA-403/MP304	NA	SCH. 160	.719" x .488" WL. THK., SMLS.
H	3" x 2"	CONC. RED.	SA-403/MP304	NA	SCH. 160	.488" x .344" WL. THK., SMLS.
I	3/4"	H/CPLG.	SA-182/F304	NA	SCH. 160	F-SS.W. - .315" BORE
J	1"	H/CPLG.	SA-182/F304	NA	SCH. 160	F-SS.W.
K	4"	VALVE	SA-182/F304	NA	SCH. 160	F-SS.W.
L	2"	PIPE	SA-312/TP304	NA	SCH. 160	F-SS.W.
M	2"	90° ELL.	SA-182/F304	NA	SCH. 160	F-SS.W.
N	2"	VLV.	2NV22	NA	SCH. 160	F-SS.W.

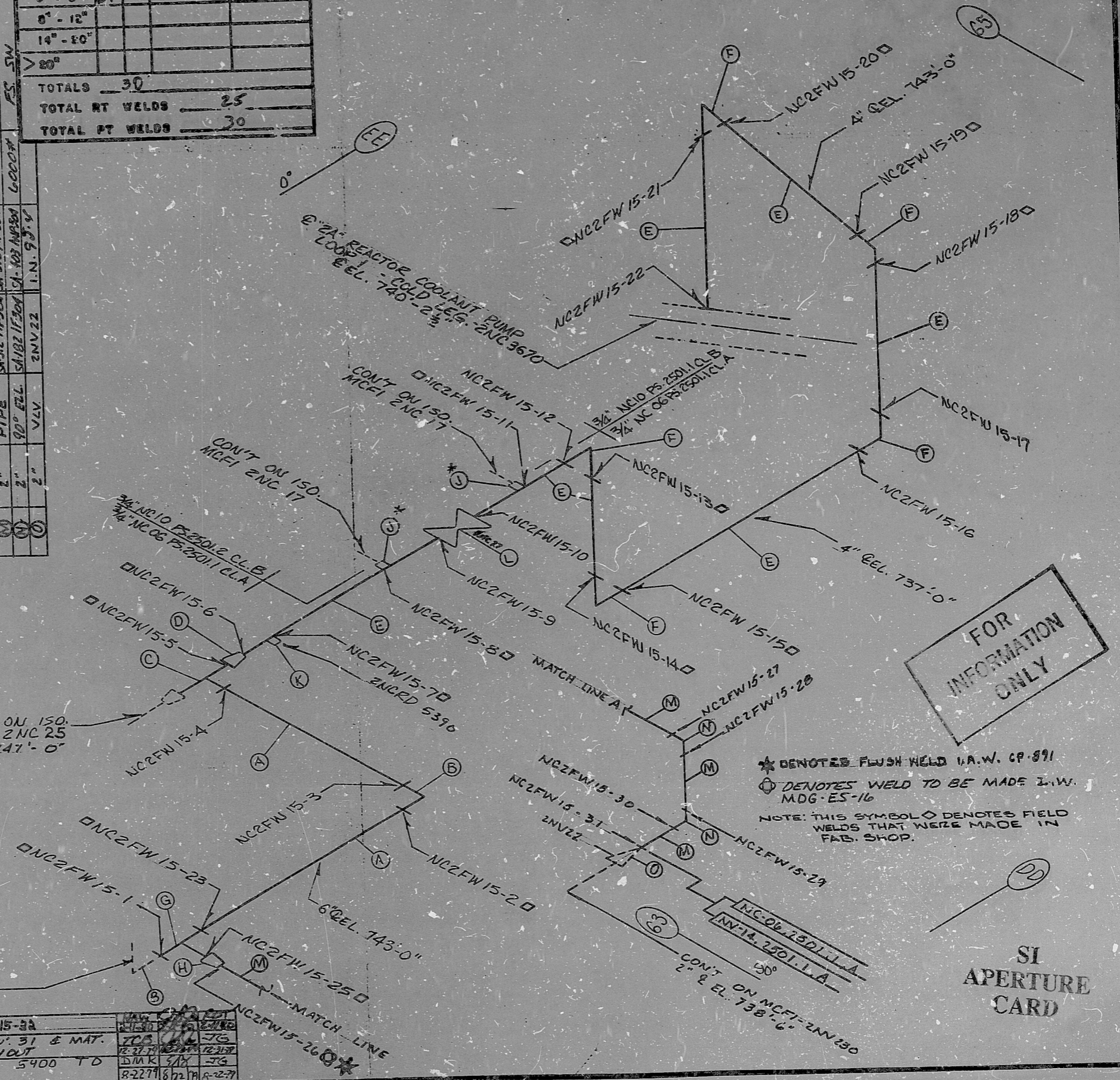
MANHOURS	
PIPE	WELD
< 2 1/2"	9
3" - 6"	21
6" - 12"	
14" - 18"	
> 18"	
TOTALS	30
TOTAL RT WELDS	25
TOTAL FT WELDS	30

- 9 DELETED WELD NO. NCFW 15-32
- 10 DELETE SEC. 01 FROM TITLE BLOCK
- 11 ADDED NOTE FOR FLUSH WELDS

LAST WELD NO. USED 32
 * TO BE DRILLED TO .375" BORE

CON'T ON ISO. MCFI 2 NC 25
 4" & EL. 747'-0"

CON'T ON ISO. MCFI 2 NC 13



PDR RIDS

8903290236

