

INSERVICE INSPECTION

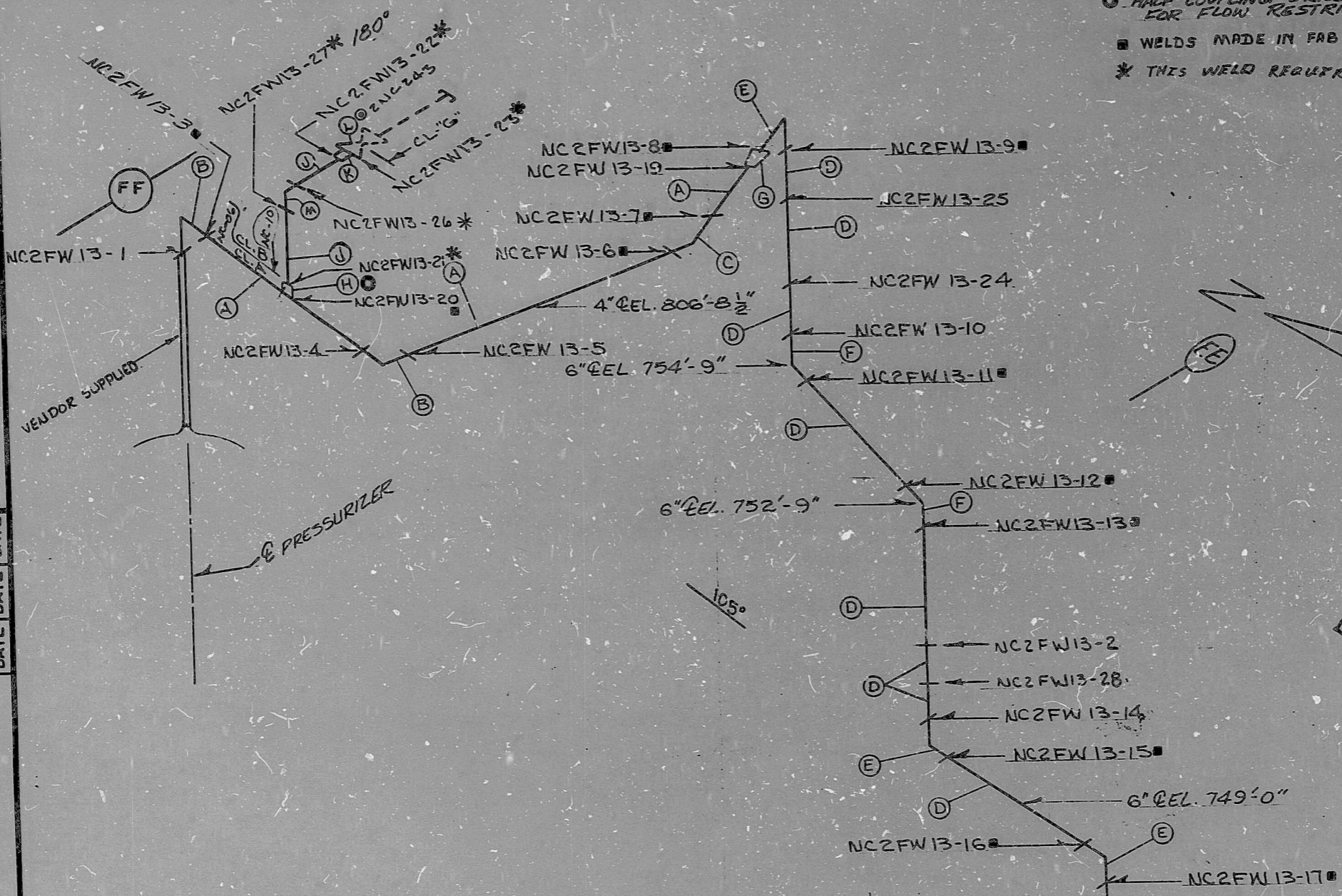
REV. 6
 BUILDING: REACTOR
 ZONE R-26
 ISO. NO.: MCFI-2NC-13
 DUKE PIPING CLASS: A8ASME B&PV CODE SECT. III
 SYSTEM SYMBOL: NC- REACTOR COOLANT
 PIPING SPEC.: NC 06 PS. 2501.1 NC-10 PS 2501.2
 DRAWING NO.: MC 2414-03.20-01; 07 EL. 778'-0"

REV.	DATE	BY	CHK	APPR.
1	11/16/64	WJ	WJ	WJ
2	11/16/64	WJ	WJ	WJ
3	10/23/64	WJ	WJ	WJ
4	10/23/64	WJ	WJ	WJ
5	10/23/64	WJ	WJ	WJ
6	10/23/64	WJ	WJ	WJ

NO.	REVISION	QA. CONDITION
1	ADDED FRB SHOP NOTE	
2	REVISED CONFIG OF VENT ENCL 283	
3	ADDED SEC. NC-10 AND PIPE SPEC. 2501.2	
4	MOVED WELD #12; ADDED WELD #28	

5 ADDED ASTRISK TO WELD 21, 22, 23, AND 27
 6 DELETED SYMBOL AT WELD #6 DUE TO CUT OUT & REWELD

REV. 6	DATE 10/23/64	BY WJ	CHK WJ	APPR. WJ
--------	---------------	-------	--------	----------



NOTE:
 1. CONSTRUCT I.A.M. MISC. SPECIAL PIPING
 2. COMPONENT DETAIL DRAWING MDG-ES-10
 3. HALF COUPLING, DRILL TO .375" I.D. FOR FLOW RESTRICTION.
 ■ WELDS MADE IN FRB SHOP
 * THIS WELD REQUIRES FULL INSPECTION

FOR INFORMATION ONLY

SI APERTURE CARD

ITEM	SIZE	DES.	SPEC./GRADE	SPEC./GRADE	SCH./RATE	MISC.
(M)	3/4"	90° EL	SA-182/F-304	SA-403/WP-304	6000 #	F.S.S.W.
(L)	1" VALVE	2NC 243	ITEM # 9J-27			
(K)	1 3/4"	RED. INS.	SA-182/F-304	SA-403/WP304	6000 #	F.S.S.W. (CL.B)
(J)	3/4"	PIPE	SA-376/TP-304	N/A	SCH. 160	.219" WL. THK., SMLS. (CL.B)
(H)	3/4"	H/CPLG.	SA-182/F-304	SA-403/WP-304	6000 #	F.S.S.W. (DRILLED TO .375)
(G)	6" x 4"	CONC. RED.	SA-403/WP-304	N/A	SCH. 160	.719" x .531" WL. THK., SMLS.
(F)	6"	45° ELBOW	SA-403/WP304	N/A	SCH. 160	.719" WL. THK., SMLS.
(E)	6"	90° ELBOW	SA-403/WP304	N/A	SCH. 160	.719" WL. THK., SMLS.
(D)	6"	PIPE	SA-376/TP304	N/A	SCH. 160	.719" WL. THK., SMLS.
(C)	4"	45° ELBOW	SA-403/WP304	N/A	SCH. 160	.531" WL. THK., SMLS.
(B)	4"	90° ELBOW	SA-403/WP304	N/A	SCH. 160	.531" WL. THK., SMLS.
(A)	4"	PIPE	SA-376/TP304	N/A	SCH. 160	.531" WL. THK., SMLS.

BILL OF MATERIAL

LAST WELD NO. USED 28

PDR RIDS

89032 90233

