

INSERVICE INSPECTION

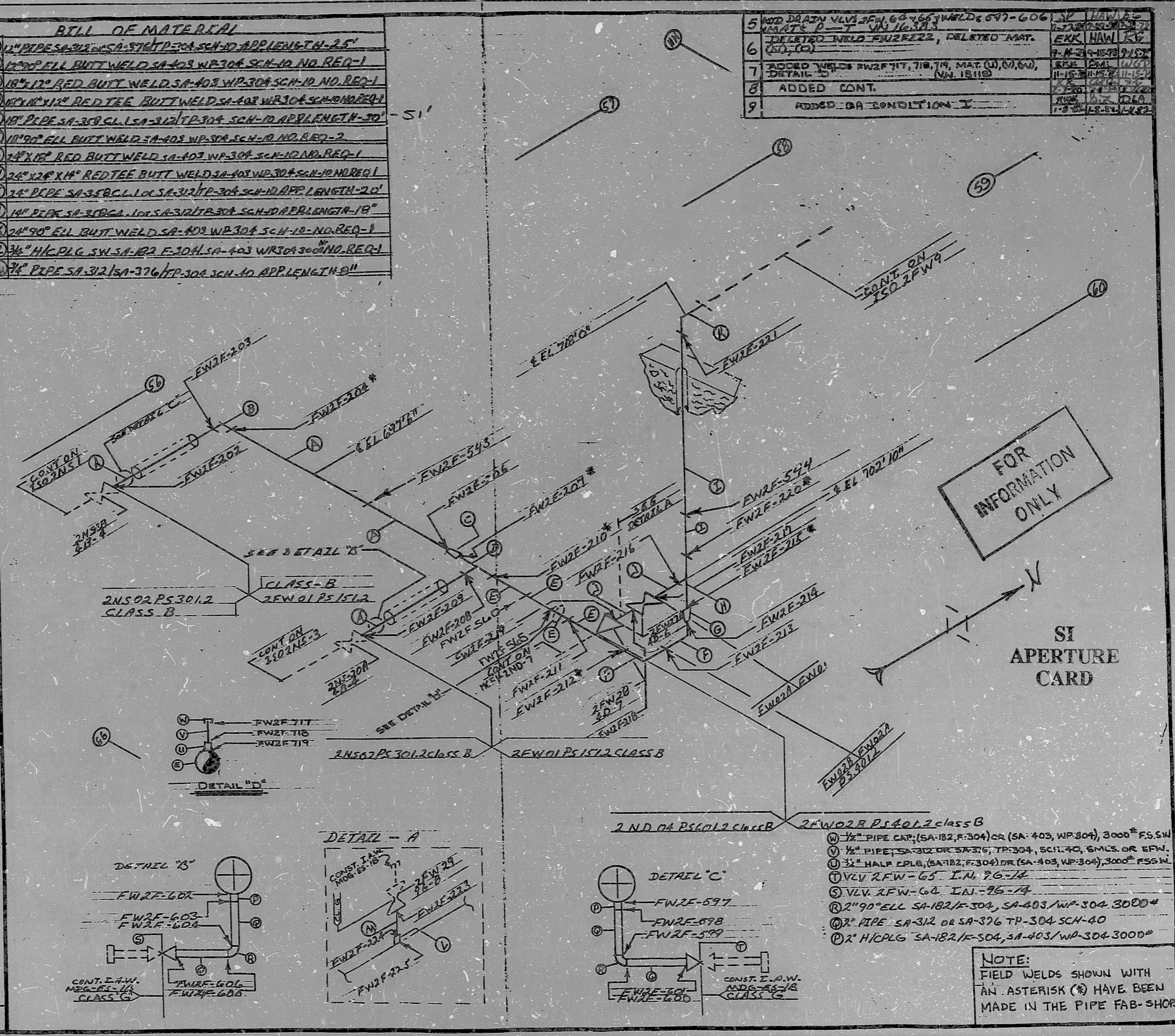
REV. 9  
BUILDING ZONE C1  
AUX  
ISO. NO.: MC-FI-2FW-7  
DUKE PIPING CLASS: ASME SEC III CLASS B  
SYSTEM SYMBOL: FW, 01, 02A, 02B  
PIPING SPEC: PS 151.2  
DRAWING NO.: MC-2406-23.40-00  
PROJECT: MSQUIRE

**BILL OF MATERIAL**

(A)	1" PIPE SA-312/SA-376 TP-304 SCH-40 APP. LENGTH 1'-2 1/2"
(B)	12" 90° ELL BUTT WELD SA-403 WP-304 SCH-40 NO. REQ-1
(C)	18" 12" RED BUTT WELD SA-403 WP-304 SCH-40 NO. REQ-1
(D)	12" 90° RED TEE BUTT WELD SA-403 WP-304 SCH-40 NO. REQ-1
(E)	18" PIPE SA-309 CL. 1 SA-312 TP-304 SCH-40 APP. LENGTH 30' - 51'
(F)	12" 90° ELL BUTT WELD SA-403 WP-304 SCH-40 NO. REQ-2
(G)	14" 18" RED BUTT WELD SA-403 WP-304 SCH-40 NO. REQ-1
(H)	24" 12" X 14" RED TEE BUTT WELD SA-403 WP-304 SCH-40 NO. REQ-1
(I)	24" PIPE SA-358 CL. 1 SA-312 TP-304 SCH-40 APP. LENGTH 20'
(J)	14" PIPE SA-309 CL. 1 SA-312 TP-304 SCH-40 APP. LENGTH 18"
(K)	24" 90° ELL BUTT WELD SA-403 WP-304 SCH-40 NO. REQ-1
(L)	3/4" H/C PLG SW SA-182 F-304 SA-403 WP-304 3000# NO. REQ-1
(M)	3/4" PIPE SA-312/SA-376 TP-304 SCH-40 APP. LENGTH 8"

REV.	DATE	BY	CHKD.	APPR.	DATE	DESCRIPTION
1	1-3-78	BC				ADDED NOTE LOCATING FIELD WELDS MADE IN FAB SHOP, ADDED ZONE, ADDED NUCLEAR SAFETY RELATED
2	1-3-78	BC				ADDED WELD FWZF-560
3	1-3-78	BC				ADDED WELDS FWZF-543 & 544
4	1-3-78	BC				REL FOR CONST

REVISION: QA CONDITION I



5	ADD DRAIN VALV 2FW-66 & 667 WELDS 697-606	BY HAW
6	DELETE WELD FWZF-222, DELETE MAT. (SI), (C)	EKK HAW
7	ADDED WELDS FWZF-717, 718, 719, MAT. (W), (V), (C), (SI), (C)	BY HAW
8	ADDED CONT.	BY HAW
9	ADDED GA CONDITION I	BY HAW

FOR INFORMATION ONLY

SI APERTURE CARD

**NOTE:**  
FIELD WELDS SHOWN WITH AN ASTERISK (\*) HAVE BEEN MADE IN THE PIPE FAB-SHOP

12/15/78

PDR RIDS

8903290204

