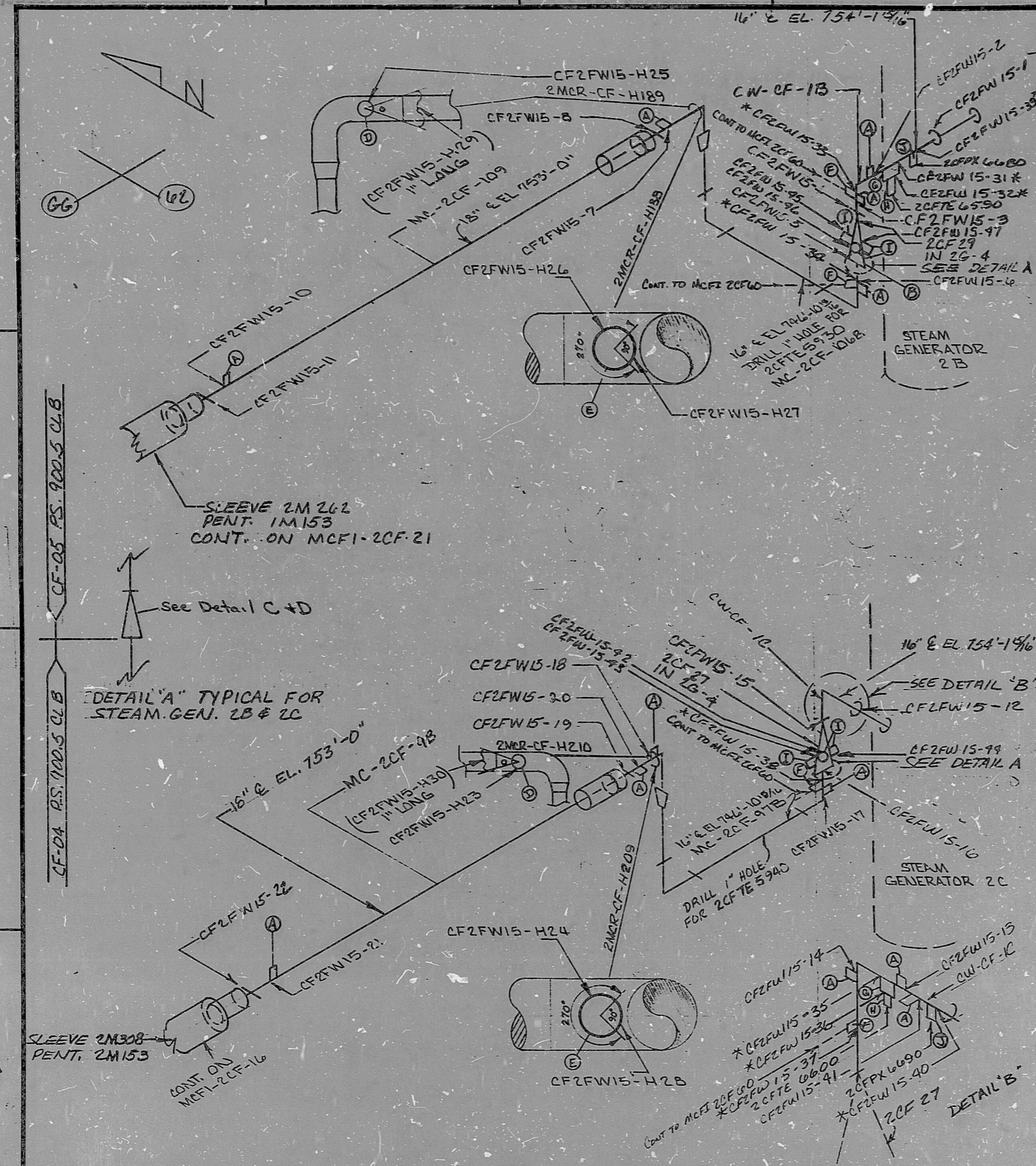


INSERVICE INSPECTION



REVISIONS BLOCK					
GRID	REV. NO.	DESCRIPTION	ORIG. DATE	CHKD. DATE	APPROV. DATE
	0	RELEASE FOR CONSTRUCTION	6-20-77	6-20-77	6-20-77
D-3	1	DELETE WELD 15-9	2-20-77	2-21-77	2-21-77
	2	REVISED CONT.	5-28-78	5-31-78	5-31-78
	3	REVERSE VALVES 2CF27 AND 2CF29	1-19-79	2-14-79	2-14-79
	4	CHANGE MAT B, C	7/15/79	8-15-79	9-15-79
	5	HANGER: 188, 189, 209, 210 WELDS 23, 24, 25, 26 ADD	8-10-79	8-14-79	7-26-79
	6	ADD MATERIAL SPECS TO PIECE A (FIELD REQUEST)	7/10/79	12/12/79	12/12/79
	7	ADDED LOCATION OF 2CFTE 5940	5-30-80	5/30/80	5/30/80
	8	DELETE MAT G CHANGE SCH OF MAT E (REVISED HGR. SECT 11)	6-23-81	6-23-81	6-23-81
	9	DELETE MAT F	9-30-81	9-30-81	10-1-81
D-4	10	CW-CF-1B WAS MC-2CF-106A, CW-CF-1C WAS MC-2CF-97A	7-2	7-2	7-2
B-3	11	HANGER: 2MCR-CF-H189 ADD WELD H29	10-15-81	10-15-81	10-15-81
B-2	12	HANGER: 2MCR-CF-H210 ADD WELD H30	10/21/81	10/21/81	10-22-81
	13	DELETED H DESIGNATION ON WELD CF2FW15-7	12-2-81	12-2-81	12-3-81
	14	ADD WELDS B1 THRU B8, ADD MAT L (E) ADD 2CFTE 6900 & 6000 (NSM 20073)	1/17/83	1/17/83	1-18-83
	15	ADD WELDS 33 & 40; DETAILS FOR INSPECTION PER NSM MG 2-562 PER NSM 20179	7/5/83	7-6-83	7-6-83
	16	ADD WELD # 41 PER U.I. 29528	7/8/83	7-11-83	7-11-83
	17	SEAL WELDS HYDRO PUMP AND HINGE PIN PLUGS (EXISTING IN HANGAR BODY) PER U.I. # NSM 2513, ADD WELD # 42 THRU 47	7/19/83	7-19-83	7-19-83
	18	ADD MAT. L PER NSM MG-20179	12-28-83	1-4-84	1-4-84
	19	REVISION 1	1-2-84	1-2-84	1-2-84
		ADD MAT. L, DETAIL C+D WELDS 48 THRU 51 PER NSM MG 2-562	1-2-84	1-2-84	1-2-84
		Delete Mat. L, Detail C+D WELDS 48 THRU 51 PER NSM MG 2-562	9-24-85	9-24-85	9-24-85

FOR INFORMATION ONLY
SI APERTURE CARD

ITEM	SIZE	DES.	SPEC./GRADE	SPEC./GRADE	SCH./RATE	REMARKS
①	1"	HALF/CPLG.	SA182/304	SA182/304	6000#	FSSW
②		THREADED HYDRO AND HINGE PIN PLUGS - (EXISTING) C.S.	SA-105			FSSW
③	1"	THERM WELL	SA 479/TP304	PART NO. 200-456-2		STAINLESS
④	3/4"	HALF/CPLG.	SA 105	SA 234/WPB	3000#	FSSW
⑤	1"	HALF/CPLG.	SA 105	SA 234/WPB	3000#	FSSW
⑥	10"	PIPE C.S.	SA 106, B		.80	HANGER ATTACH.
⑦	8"	PIPE C.S.	SA 106, B		140	HANGER ATTACH.
⑧	16"	V.L.V.	2CF 27, IN 2G-4			
⑨	16"	V.L.V.	2CF 29, IN 2G-4			
⑩	1 1/8"	ACCESS PLUGS	SA-105 C.S.	BY GRINNELL		

BILL OF MATERIAL QA. CONDITION 1					
LAST WELD NO.		DUKE POWER COMPANY		LAST FL. NO.	
47		McGUIRE NUCLEAR STATION		NA	
NUCLEAR SAFETY RELATED			YES	NO	
			<input type="checkbox"/>	<input type="checkbox"/>	
			BUILDING:	ZONE:	
			REACTOR	R-24	
PIPE SPEC:	SYS. SYMBOL:	SEC. NO.	DRAWING NO.	EL:	
PS 900.5	CF	05 E 04	MC-2403-06.20-20	NA	
APPLICABLE CODE:		CLASS:	ISO. NO.	REV:	
ASME III		B	MCF1-2CF-15	19	

NOTE 1: FOR GUARD PIPE DETAIL SEE MCF1-2CF-21. FOR RUB PAD DETAIL SEE MCF1-2CF-27

NOTE 2: 1 1/8" ACCESS PLUGS INSTALLED IAW. MDC-ES-4

NOTE * WELDS TO RECEIVE FULL INSPECTION

PDR RIDS

8903290180

