

DATE	DESCRIPTION	BY	CHK	PROJ. ENGR.	PROJ. MGR.	DATE	DESCRIPTION	BY	CHK	PROJ. ENGR.	PROJ. MGR.
	REDRAWN & ISSUED FOR USE	HH	NOR								

BROWN & ROOT INC.
ENGINEERS-CONSTRUCTORS
HOUSTON, TEXAS

SOUTH TEXAS PROJECT

NUCLEAR SAFETY RELATED CLASS 1E

PKG: 032A | SUFF: 102 | ACT: 581

DRAWING TITLE	CONTRACT NO/SCALE
ELECTRICAL	CR-0241 NONE
ELEMENTARY DIAGRAM	DRAWING NO 4-E-15
SIBY DIESEL GENERATOR	I-E-4061-B
NO. 13 416 KV FDR. BKR.	

INFORMATION PRELIMINARY REVIEW USE CONSTRUCTION

CS-MB (CP-003) 3576

CONTACTS (HANDLE END)	POSITION		TRIP	PULL TO LOCK	USE
	CLOSE	NORM AFTER CLOSE			
1 IC 2C 2 1	X				CONT
2 HO 2HO 2 2	X				SP
3 3C 4C 4 3				X	CONT
4 HO 2HO 4 4				X	SP
5 5C 6C 6 5	X	X			ALARM
6 HO 2HO 6 6	X	X			ALARM
7 7C 8C 8 7	X	X	X		ALARM
8 HO 2HO 8 8	X	X	X		ALARM

SPRING RETURN TO CENTER X-DENOTES CONTACT CLOSE QE 58M

CS/TEST

CONTACTS (HANDLE END)	POSITION		TRIP	USE
	CLOSE	NORM		
1 IC 2C 2 1				CONT
2 HO 2HO 2 2	X			CONT

SPRING RETURN TO NORMAL X-DENOTES CONTACT CLOSE QE 58M

55-MB (CP-003) 35122

CONTACTS (HANDLE END)	POSITION		TRIP	USE
	ON	OFF		
1 1C 2C 1 1	X			CONT
2 HO 2HO 2 2	X			CONT
3 3C 4C 3 3	X			SYNC
4 HO 2HO 4 4	X			SYNC
5 5C 6C 5 5	X			SYNC
6 HO 2HO 6 6	X			SYNC

MAINTAINED CONTACT X-DENOTES CONTACT CLOSE REMOVABLE KEYS HANDLE QE 58M

INFORMATION
THIS DOCUMENT IS SUBJECT TO REVISION WITHOUT NOTIFICATION TO THE USER OF THIS COPY

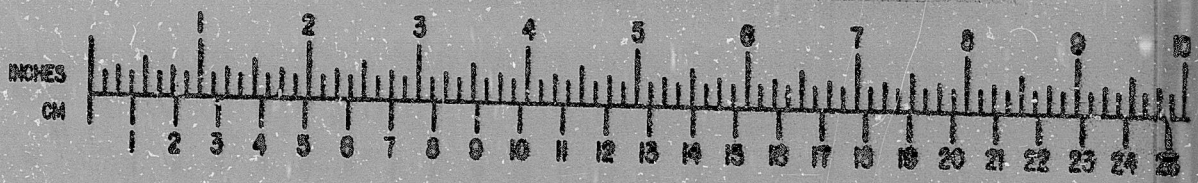
TERA APERTURE CARD

LEGEND
3ERMXX - ENG. IN REMOTE MODE RELAY AT ZLP-106
43GBNX - GEN. BKR. SEL. SW. NORM. RELAY AT ZLP-106
3ELMX4 - ENG. IN LOCAL MODE RELAY AT ZLP-106

REFERENCE DRAWINGS
O-E-0105 ELECT. WIRING STANDARDS & SYMBOLS
I-E-7176 SIBY DIESEL GEN. SW. DEVELOPMENTS SH.1
I-E-6061 CWD SIBY DIESEL GEN. NO. 13 416 KV FOR BKR.
I-E-1112 416 KV ESE SWGR. EIC ONE LINE DIAGRAM
I-E-7176 CWD DG 13 CONTROLS & INST.
I-E-7187 CWD DG 13 CONTROLS & INST.
GE-553-137 CONTROL SCHEMATIC-ENG. SH.10911

LEGEND
43CM - UNIT CONTROL MODE SELECTOR SW. AT ZLP-106
ZLP-105 - DIESEL GEN. NO. GEN. CONTROL PNL.
ZLP-106 - DIESEL GEN. NO. ENG. CONTROL PNL.
55-MB - SYNCHRONIZING SWITCHES MB-CP003
86B - LOCKOUT RELAY FOR BUS EIC DIFF. RELAY
86D - LOCKOUT RELAY FOR BUS EIC DIFF. RELAY
86G - LOCKOUT RELAY FOR GEN. DIFF. SHUTDOWN SIG. AT ZLP-105
S15 - S15 SIGNAL FROM WESTINGHOUSE CABINET.
S15 SEQ - S15 SIGNAL FROM SEQUENCER LOGIC

NOTES
1. ALL BKR. POSITION INDICATING LIGHTS EXCEPT THE GREEN LIGHTS AT THE SWGR. SHALL MONITOR THE TRIP COIL.
2. DIESEL ENG. CONTROL CABINET SEE DWG. I-E-7176 SH.18 FOR CIRCUIT DETAILS.



BROWN & ROOT INC. MICROFILM SERVICES

THURSDAY, SEPT. 6 1975

RIDS

8112180314

