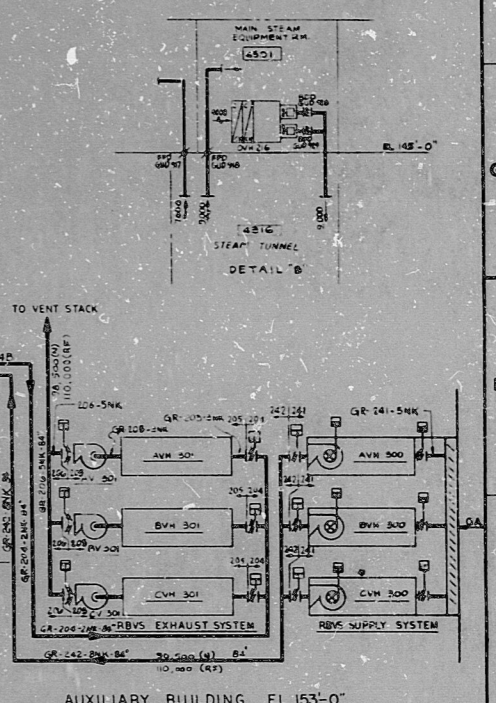


SYSTEM GR	
REFERENCE DRAWINGS	DATE
1. REACTOR BLDG. AIR FLOW DIAG. W-66-1	11-2-66
2. REACTOR BLDG. REC'D CONTROL SYS. W-66-1	11-2-66
3. REACTOR BLDG. EXHAUST SYSTEM W-66-1	11-2-66



- NOTES:
1. ALL DUCT IDENTIFICATION HAS THE PREFIX "GR" UNLESS SHOWN TO BE "DU" OR "ST".
 2. SOME OF THE BALANCE AND FIRE PROTECTION DAMPERS ARE NOT SHOWN IN THIS FIELD FOR COMPLETE LISTING AND LOCATION OF ALL DAMPERS SEE HVAC AREA DRAWINGS.
 3. FOR DUCT LINE NUMBERS SEE HVAC AREA DRAWINGS.
 4. THE SUPPLY AND EXHAUST AIR QUANTITIES ARE BASED ON STANDARD AIR.
 5. THE SUPPLY AIR QUANTITIES ARE 10% LESS THAN EXHAUST DURING NORMAL OPERATION TO MAINTAIN THE BUILDING AT A NEGATIVE PRESSURE.
 6. FIRE PROTECTION DAMPERS LOCATED WITHIN SYSTEMS SERVING AREAS PROTECTED WITH A VULNERABLE ARRANGEMENT SHALL HAVE ELECTRIC THERMAL SET POINTS (ETSP).
 7. HVAC CONTAINS SYSTEMS OR PORTIONS OF SYSTEMS:
 - GR - REACTOR BUILDING HVAC
 - ST - DOWNWELL VENTILATION
 - GU - FILTRATION RECIRCULATION & MITIGATION

PRO APERTURE CARD

REVISION	DATE	BY	CHKD
1	11-2-66	JAV	
2	11-2-66	JAV	
3	11-2-66	JAV	
4	11-2-66	JAV	

RECHTEL
SAN FRANCISCO

PUBLIC SERVICE ELECTRIC AND GAS COMPANY
HOPE CREEK GENERATING STATION

PAID
REACTOR BUILDING
AIR FLOW DIAGRAM

JOB NO.	DESIGNER NO.
W-66-1	M-76-1
4	

22"
17"
11"
8.5"
11"
17"
22"

22"
17"
11"
8.5"
11"
17"
22"

RIDS

8307270100

