

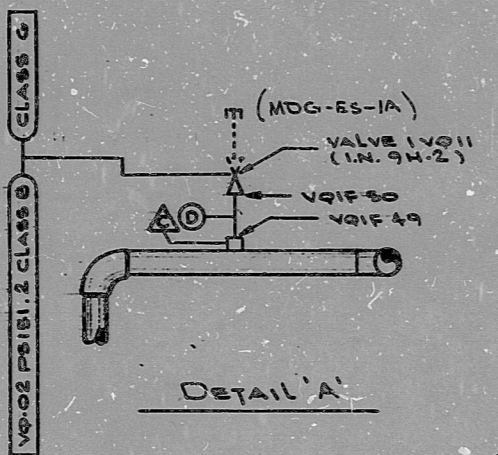
# INSERVICE INSPECTION

REV. 12	ISO. NO.: MCFI - IVQ4	DUKE PIPING CLASS: B ASME SECT. III	BUILDING: REACTOR R7
REVISED TO ADD VENT VALVE DETAIL 'A' AND DELETE SUBASSEMBLY IVQ15 PER VN 11071	DUKE PIPING CLASS: B ASME SECT. III	SYSTEM SYMBOL: CONTAINMENT AIR REL. AND ADDITION	
REVISED TO ADD WELD VQIF 58		PIPING SPEC: VQ 02 PSI 51.2	
REVISED TO CHANGE MAT (E) TO 24"		DRAWING NO.: MC-1422-17.20-00	
REVISIONED TO ADD MATERIAL (E)		PROJECT: MCGUIRE	
ADD 90° ELL TO IVQP 14			
REL. FOR CONST. VN. 8310			
NO.	ORIG. CHKD. APPR.	DATE	DATE

NUCLEAR SAFETY RELATED

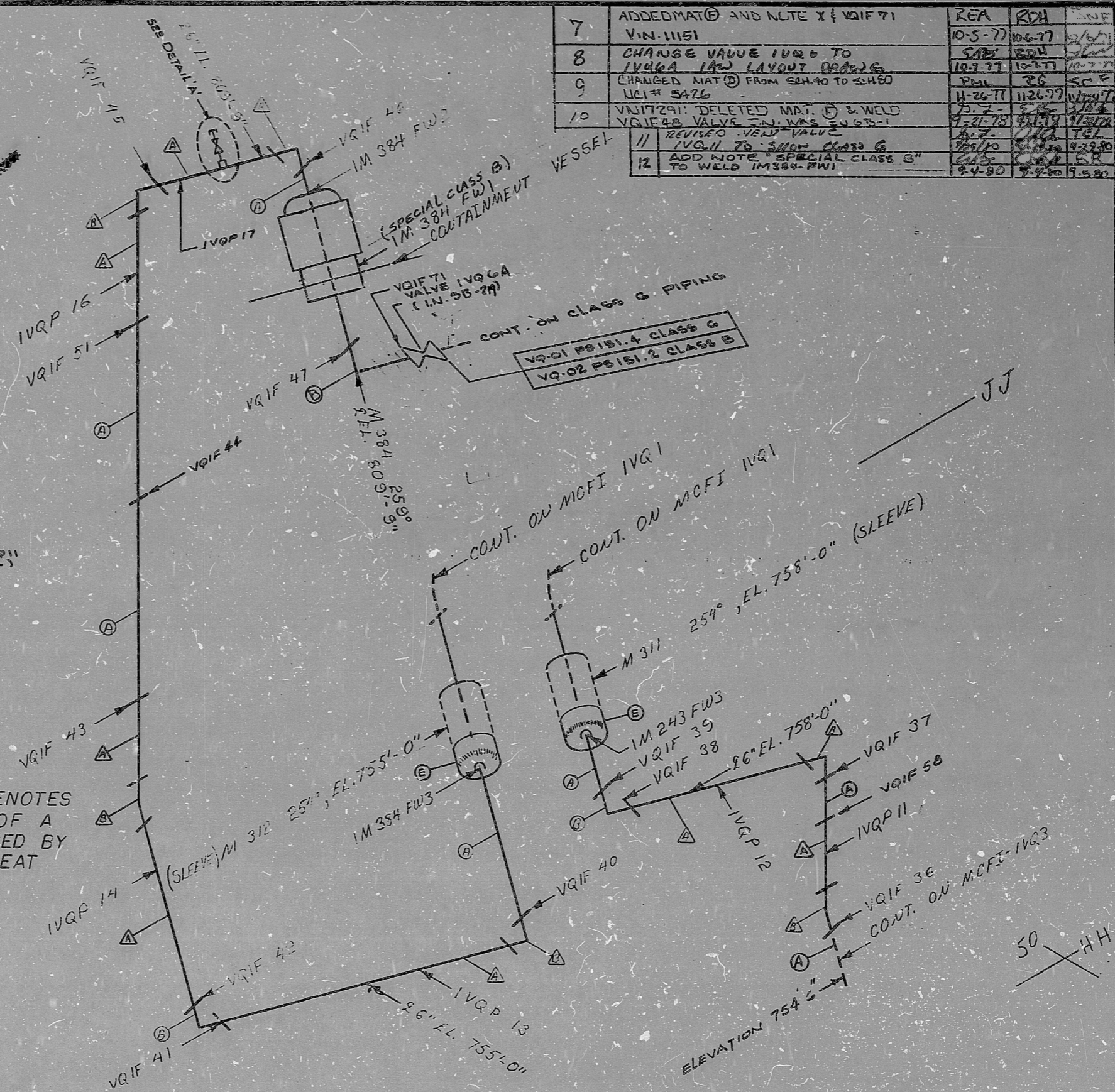
**FOR INFORMATION ONLY**

**SI APERTURE CARD**



NOTE: Δ THIS SYMBOL DENOTES MATERIAL THAT IS PART OF A PRE-ASS. SECT. TO BE USED BY INSP. FOR FIT UP AND HEAT NUMBER CHECK ONLY!

DESCRIPTION	NC. REQ.
⑥ 6" PIPE SA 312 SA 376 TP 304 SCH. 40 280" WALL	
① 8" PIPE (SA 312) (SA 376) TP 304, SCH. 10, 124" WALL, APP. 56'-5"	9
② 8" 90° ELL SA-303, WP-304, SCH. 10	1
③ 34" S.W. HALF COUP. (SA-182, F-304) (SA-303, WP-304), 3000"	1
④ 1/4" PIPE (SA-312) (SA 376) TP 304, SCH. 80, 11" WALL, APP. 6"	1
⑤ 24" CS PIPE CAPS A-234 WPB .500" WALL	2



7	ADDED MAT ⑥ AND NLTE X & VQIF 71	REA	RDH	SNF
8	CHANGE VALVE 1VQ6 TO 1VQ6A IN LAYOUT DRAWING	10-5-77	10-6-77	10-7-77
9	CHANGED MAT ⑥ FROM SCH. 40 TO SCH. 80	10-7-77	10-7-77	10-7-77
10	VQIF 291: DELETED MAT. ⑥ & WELD VQIF 48. VALVE 1VQ6 WAS ENG. 2-1	11-26-77	11-26-77	11-26-77
11	REVISED VQIF VALVE 1VQ11 TO SHOW CLASS G	1-22-78	1-22-78	1-22-78
12	ADD NOTE "SPECIAL CLASS B" TO WELD 1M384-FW1	2-4-80	2-4-80	2-4-80



8903280389

PDR RIDS

