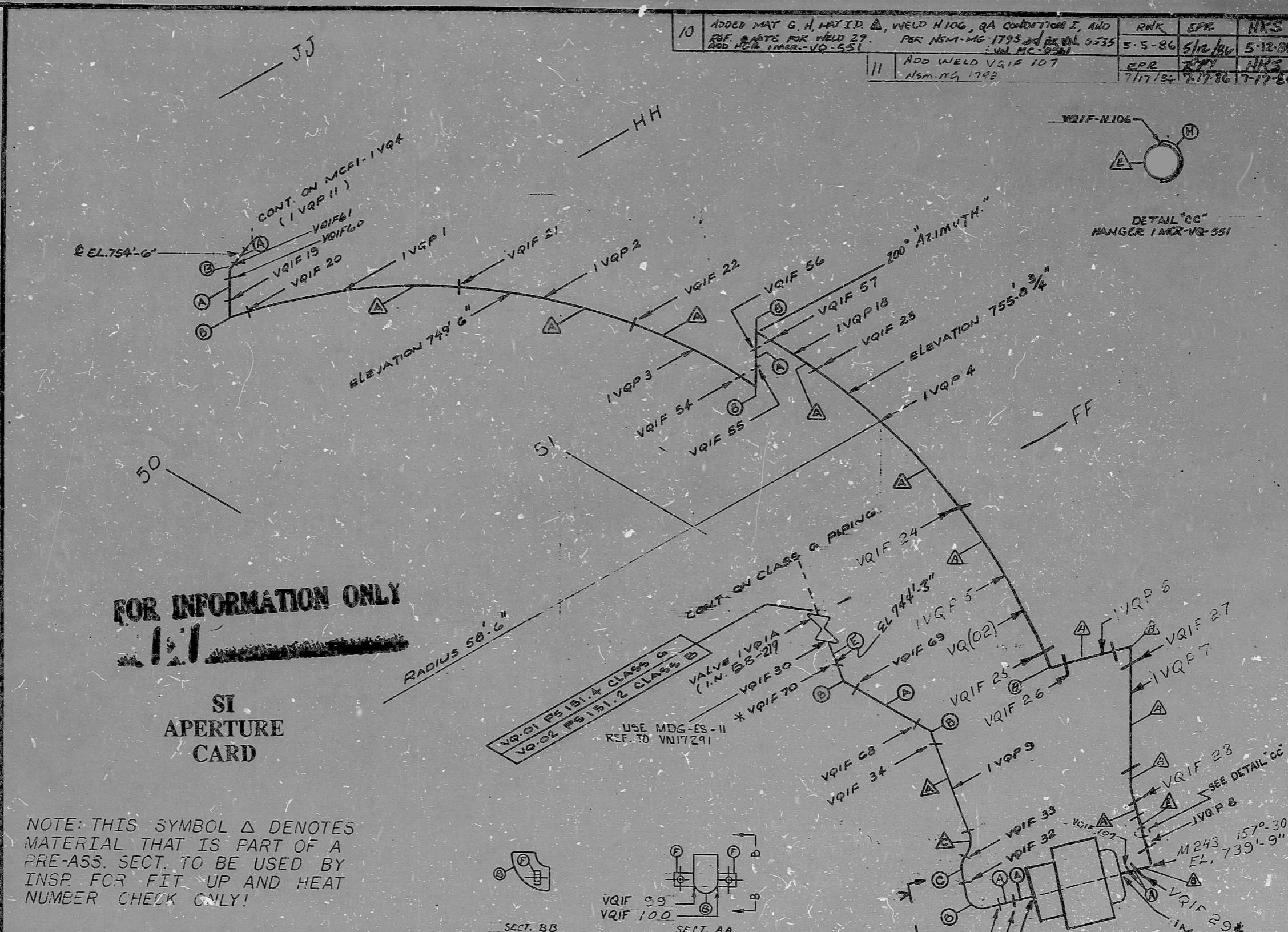


INSERVICE INSPECTION

| | |
|-----------------------|---|
| REV. 11 | ISO. NO: MCFI-1VQ3 |
| BUILDING: REACTOR R-7 | DUKE PIPING CLASS: B ASME SECT. III |
| | SYSTEM SYMBOL: CONTAINMENT AIR REL AND ADDITION |
| | PIPING SPEC: VQ(02)PS151.2 GA CONDITION I |
| | DRAWING NO.: MC-1422-17.20-00 |

| KEY | DATE | BY | REV |
|---------|------|----|-----|
| 10-507 | 047 | GA | A |
| 9-23-77 | 047 | GA | A |
| 9-23-77 | 047 | GA | A |
| 9-23-77 | 047 | GA | A |
| 9-23-77 | 047 | GA | A |
| 9-23-77 | 047 | GA | A |
| 9-23-77 | 047 | GA | A |

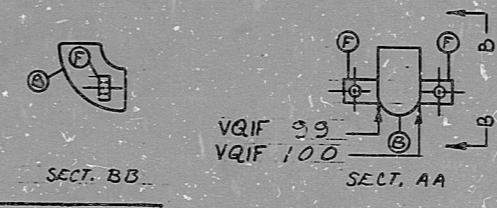
| NO. | REVISION |
|-----|---|
| 0 | REL. FOR CONST. V.N.8310 |
| 1 | REVISID TO ADD WELDS VQIF 54, VQIF 57 (VN 9741) |
| 2 | ADD NOTE AT WELDS VQIF 61 AND CORRECT EC. TO HEAD 754'-6" VQE 153'-6" AND ADD ELEC. TAG - V.N. 10033 |
| 3 | REVISED TO CHANGE CONFIGURATION AND ADD WELDS VQIF 68, VQIF 70 AS PER V.N. 11151 |
| 4 | ADDED MAT. G. H. MAT. ID. Δ, WELD N10G, QA CONDITION I, AND REF. NOTE FOR WELD 27. ADD WELD IM243-VQ-551. |



NOTE: THIS SYMBOL Δ DENOTES MATERIAL THAT IS PART OF A PRE-ASS. SECT. TO BE USED BY INSP. FOR FIT UP AND HEAT NUMBER CHECK ONLY!

④ 1/2" X 3" X 10 3/8" LG. PLATE SA-240 TYPE 304

| NO. | REQ. |
|--|------|
| ① ② 6" PIPE (SA-312) OR (SA-376), TP-304 SCH.10, 134" W. ALL APP. 5' | 6 |
| ③ 6" 90° ELL. SA-403, WP-304, SCH.10 | |
| ④ 6" 45° ELL. SA-403, WP-304, SCH.10 | |
| ⑤ 6" 90° ELL. SA-403, WP-304, SCH.10 (CUT FROM SCROLL) | |
| ⑥ 6" PIPE (SA-312) OR (SA-376), TP-304, SCH.40, USE MDG-ES-11 | |
| ⑦ 2 1/2" X 3" CLIP, SA-516, GR. 70, CS. | |
| ⑧ 6" 90° ELL. SA-403, WP-304, SCH.40, SMLS OR EFW | |



| | | | | |
|----|---|---------|---------|---------|
| 10 | ADDED MAT. G. H. MAT. ID. Δ, WELD N10G, QA CONDITION I, AND REF. NOTE FOR WELD 27. ADD WELD IM243-VQ-551. | RNK | EPR | NKS |
| | | 5-5-86 | 5/12/86 | 5-12-86 |
| 11 | ADD WELD VQIF 107 | EPR | JKY | HKS |
| | Nsm. N2, 1793 | 7/17/84 | 7-17-86 | 7-17-86 |

FOR INFORMATION ONLY

SI APERTURE CARD

| | | | |
|---|---|---------|---------|
| 9 | ADD NOTE "SPECIAL CLASS B" AT WELD IM243-FW1 | SLB | RR |
| 8 | ADD EL 744'-3" AT WELD VQIF 30 | 8-2 | TEL |
| 7 | ADDED NOTE AT VQIF 50 LAYOUT VALVE IN W.P. 65-1 (0 IVQ1) | 9-21-78 | 9-21-78 |
| 6 | ADD SECT. AA & BE AND WELDS VQIF 99 & 100 AND MAT. ID. PER V.N. 17084 | 9-12-78 | 9-12-78 |
| 5 | ADDED WELD VQIF 72 | KEA | RDH |

8903280384

PDR RIDS

