

INSERVICE INSPECTION

REV. 13  
 ISO. NO: MCFI-IVQ1  
 DUKE PIPING CLASS: ASME SECT III CLASS B  
 SYSTEM SYMBOL: VQ CONT. AIR REL SYST. AUXILIARY  
 PIPING SPEC.: VQ 02 PS 151.2 QA CONDITION I  
 DRAWING NO.: MC-1422-17.43-00 & 44-00  
 PROJECT: MCGUIRE  
 LAST UNIQUE WELD NO. USED: 3

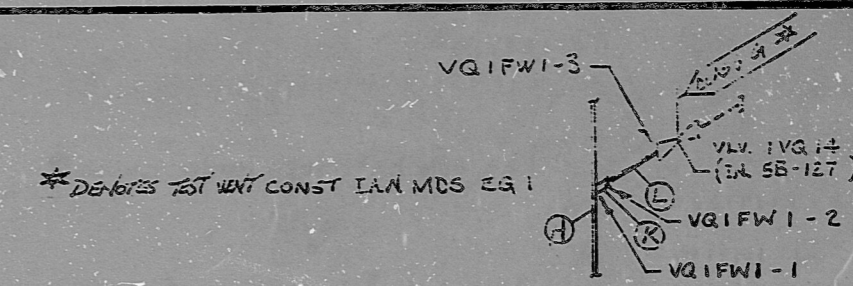
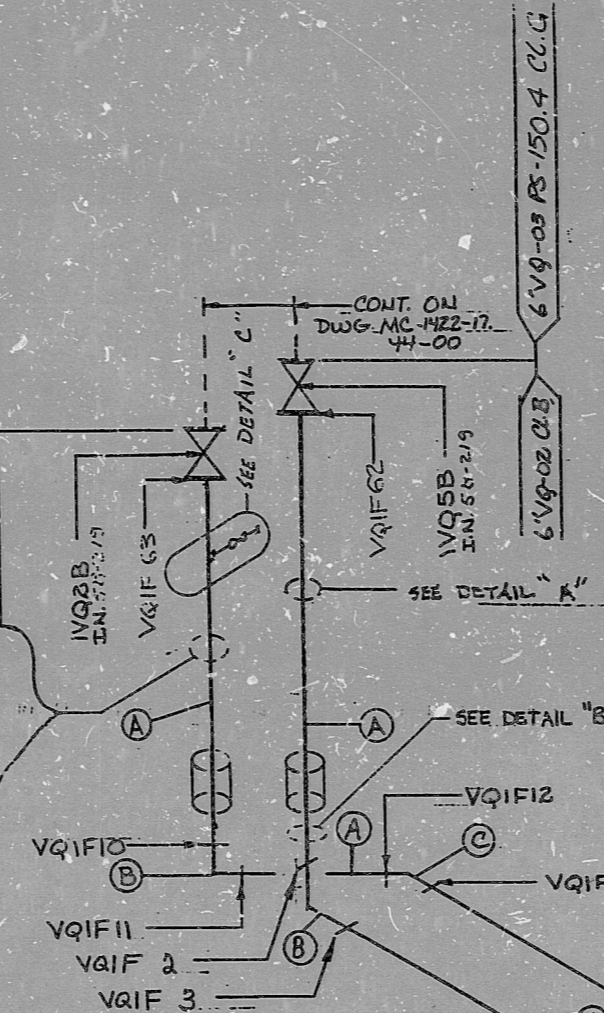
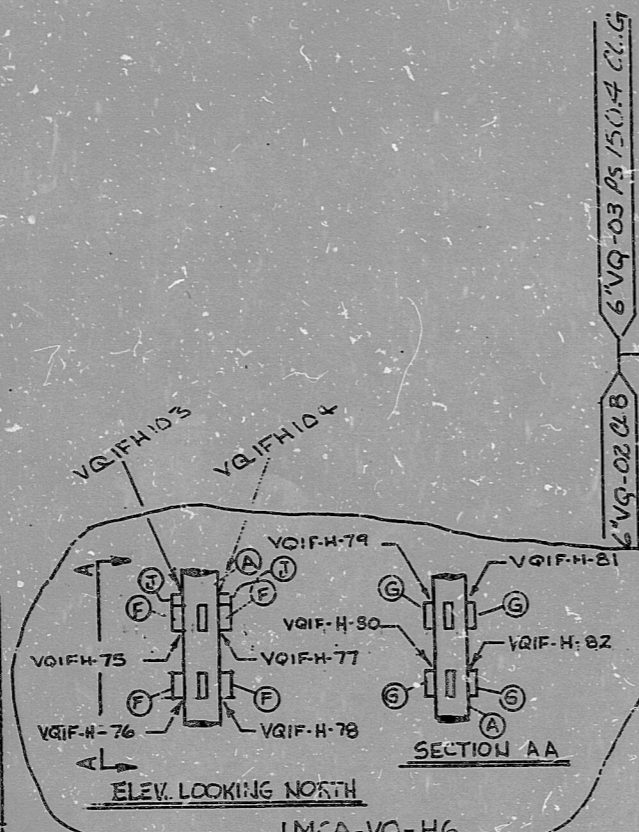
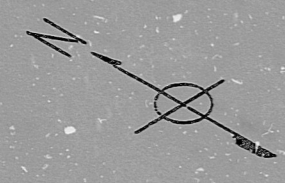
RD#	DATE	BY	CHKD.	DATE
8-25-77	8-25-77	JK	JK	8-25-77
8-25-77	8-25-77	JK	JK	8-25-77
8-25-77	8-25-77	JK	JK	8-25-77
8-25-77	8-25-77	JK	JK	8-25-77
8-25-77	8-25-77	JK	JK	8-25-77
8-25-77	8-25-77	JK	JK	8-25-77
8-25-77	8-25-77	JK	JK	8-25-77
8-25-77	8-25-77	JK	JK	8-25-77
8-25-77	8-25-77	JK	JK	8-25-77

NO.	REVISION	DATE	BY	CHKD.	DATE
1	ADD HANGER ATTACHMENT H-11 AND WELDS VQIF-74	5-11-78	JK	JK	5-11-78
2	ADDED HANGER IMCA-VQ-H6, WELDS VQIF-H-81, VQIF-H-82, VQIF-H-83, MAT. (G)	5-11-78	JK	JK	5-11-78
3	ADDED HANGER IMCA-VQ-H7, WELDS VQIF-H-84, VQIF-H-85, MAT. (G)	5-11-78	JK	JK	5-11-78
4	ADDED HANGER IMCA-VQ-H8, WELDS VQIF-H-86, VQIF-H-87, MAT. (G)	5-11-78	JK	JK	5-11-78
5	ADDED HANGER IMCA-VQ-H9, WELDS VQIF-H-88, VQIF-H-89, MAT. (G)	5-11-78	JK	JK	5-11-78
6	ADDED HANGER IMCA-VQ-H10, WELDS VQIF-H-90, VQIF-H-91, MAT. (G)	5-11-78	JK	JK	5-11-78
7	ADDED HANGER IMCA-VQ-H11, WELDS VQIF-H-92, VQIF-H-93, MAT. (G)	5-11-78	JK	JK	5-11-78

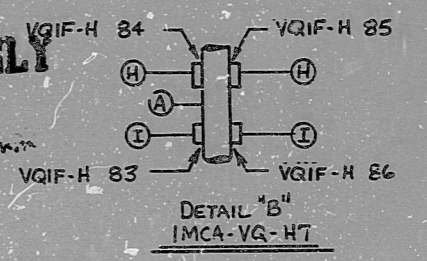
NO.	REVISION	DATE	BY	CHKD.	DATE
1	ADD HANGER ATTACHMENT H-11 AND WELDS VQIF-74	5-11-78	JK	JK	5-11-78
2	ADDED HANGER IMCA-VQ-H6, WELDS VQIF-H-81, VQIF-H-82, VQIF-H-83, MAT. (G)	5-11-78	JK	JK	5-11-78
3	ADDED HANGER IMCA-VQ-H7, WELDS VQIF-H-84, VQIF-H-85, MAT. (G)	5-11-78	JK	JK	5-11-78
4	ADDED HANGER IMCA-VQ-H8, WELDS VQIF-H-86, VQIF-H-87, MAT. (G)	5-11-78	JK	JK	5-11-78
5	ADDED HANGER IMCA-VQ-H9, WELDS VQIF-H-88, VQIF-H-89, MAT. (G)	5-11-78	JK	JK	5-11-78
6	ADDED HANGER IMCA-VQ-H10, WELDS VQIF-H-90, VQIF-H-91, MAT. (G)	5-11-78	JK	JK	5-11-78
7	ADDED HANGER IMCA-VQ-H11, WELDS VQIF-H-92, VQIF-H-93, MAT. (G)	5-11-78	JK	JK	5-11-78

- (L) 3/4" PIPE SA-312/TP-304 OR SA-376/TP-304 SCH 80 SMLS/EFW
- (K) 3/4" HALF CPLG SA-182/F-304 OR SA-182/TP-304, 3000#, FS/SW

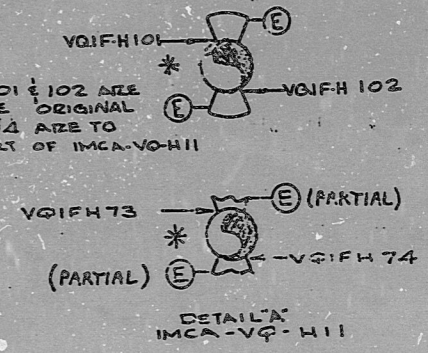
NO.	REVISION	DATE	BY	CHKD.	DATE
1	ADD HANGER ATTACHMENT H-11 AND WELDS VQIF-74	5-11-78	JK	JK	5-11-78
2	ADDED HANGER IMCA-VQ-H6, WELDS VQIF-H-81, VQIF-H-82, VQIF-H-83, MAT. (G)	5-11-78	JK	JK	5-11-78
3	ADDED HANGER IMCA-VQ-H7, WELDS VQIF-H-84, VQIF-H-85, MAT. (G)	5-11-78	JK	JK	5-11-78
4	ADDED HANGER IMCA-VQ-H8, WELDS VQIF-H-86, VQIF-H-87, MAT. (G)	5-11-78	JK	JK	5-11-78
5	ADDED HANGER IMCA-VQ-H9, WELDS VQIF-H-88, VQIF-H-89, MAT. (G)	5-11-78	JK	JK	5-11-78
6	ADDED HANGER IMCA-VQ-H10, WELDS VQIF-H-90, VQIF-H-91, MAT. (G)	5-11-78	JK	JK	5-11-78
7	ADDED HANGER IMCA-VQ-H11, WELDS VQIF-H-92, VQIF-H-93, MAT. (G)	5-11-78	JK	JK	5-11-78



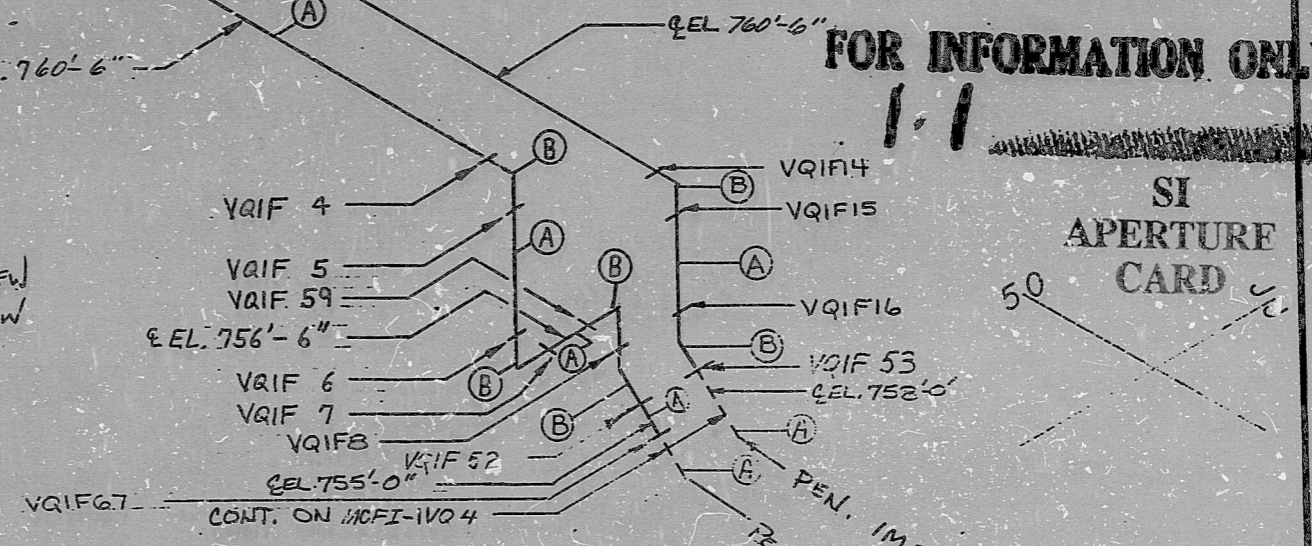
FOR INFORMATION ONLY



\* HANGER WELDS VQIF H 101 & 102 ARE TO BE USED TO REPLACE ORIGINAL WORK AND VQIF H 73 & 74 ARE TO REMAIN INTACT, AS PART OF IMCA-VQ-H11



FOR INFORMATION ONLY



13	REVISED MATL. L TO SCHEDULE 80 PER VN MC-1809	JGH	EVG	BKR
12	ADDED QA CONDITION I DETAIL C MAT. K, L, UNIQUE WELDS	RJK	JGH	RDT
11	ADDED HANGER IMCA-VQ-H10, WELDS VQIF-H-90, VQIF-H-91, MAT. (G)	JGH	EVG	BKR
10	ADD NEW WELDS AT IMCA-VQ-H11 (VQIF H 101 & 102)	JGH	EVG	BKR
9	DELETED WELDS VQIF 1 & 2	JGH	EVG	BKR
8	CHANGED INL. OF VLV. 1 & 2 TO 1/2" DIA. INL. 1 & 2	JGH	EVG	BKR

DUNCAN-PARRELL, INC., CHARLOTTE 1178



8903280382

PDR RIDS

