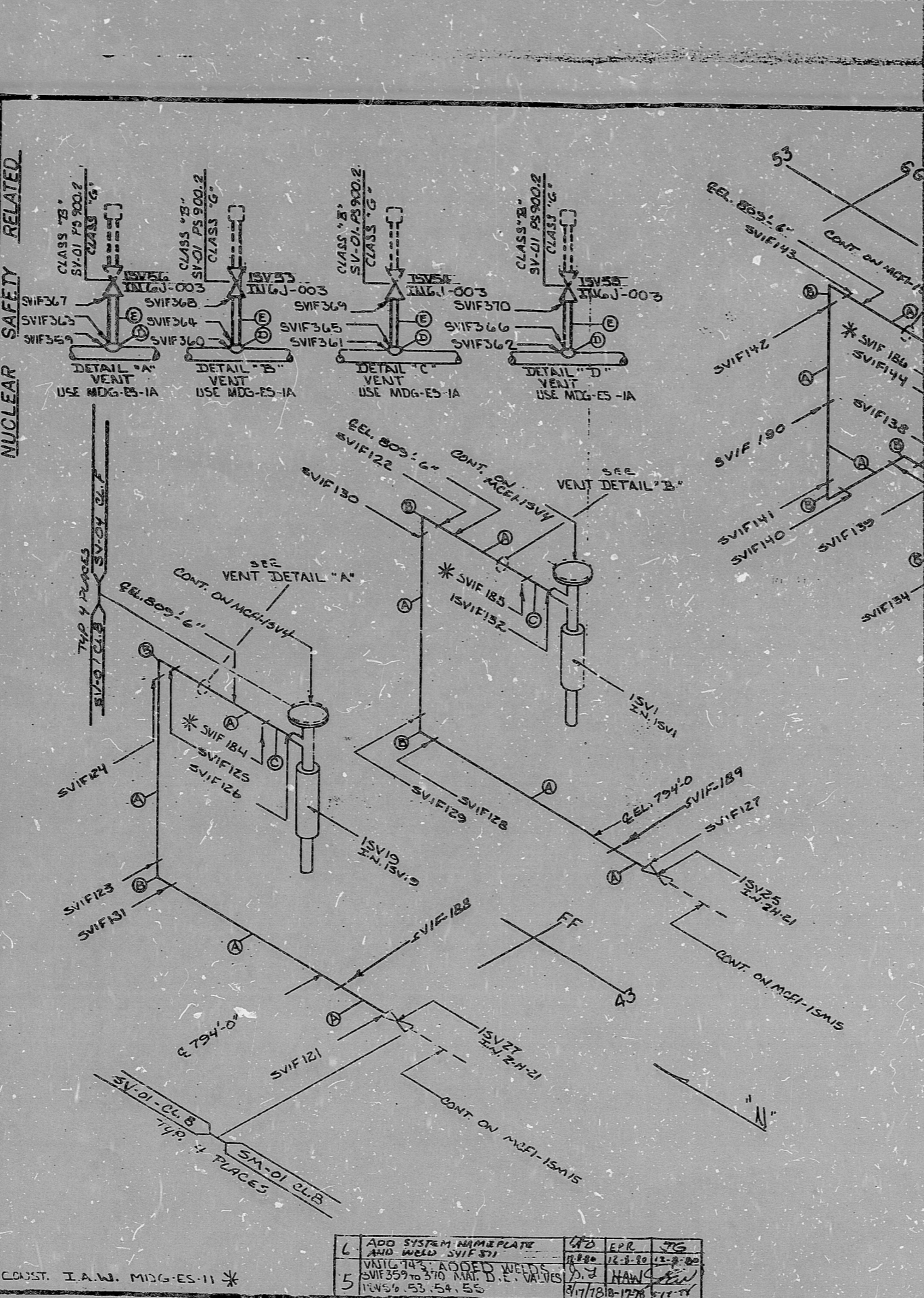


INSERVICE	INSPECTION	REV. 6
ISO. NO.: MCFI 1SV3		
DUKE PIPING CLASS: ASME SECT III CL. B		
SYSTEM SYMBOL: M, STEM VENT TO ATRP, ZN R8		
PIPING SPEC.: SVOI PS 900.2		
DRAWING NO.: MC-1419-13-20-00 (0402)		
PROJECT: MCGUIRE		
NUCLEAR SAFETY RELATED		
REVISION		
NO.	ORIG. CHGD. APPR.	DATE
1		
2		
3		
4		



CLASS CODE	CLASS	ISO NO.	REV.
MATERIAL SCHEDULE			
①	6" PIPE, SA-106, B; SCH. 80 .432 (APPX 16)		
②	6" 90° ELL, SA-234, WPB; SCH. 80 (11)		
③	2" PIPE SA-106 B SCH XX STD. .264"		
④	1" HALE COVERING SAJOS 3000# 55. SAN CSQR		
⑤	1" PIPE SA-106 B SCH. 80 13M15		

FOR INFORMATION ONLY
 SI
 APERTURE
 CARD

New
 Original

6	ADD SYSTEM NUMBER PLATE AND WELD SVIF 371	4/23	EPR	JTS
5	WELD 74'S, ADDED WELDS SVIF 359 TO 370, MAT. D. E. VALVES 12V5% 53, 54, 55	12-20	HAW	12-2-00

CONST. I.A.W. MDG-ES-11 *

REVISIONS BLOCK

8903280377

PDR RIDS

