

IN SERVICE INSPECTION

REV. 12	ISO. NO.: MCFI-ISM15	DUKE PIPING CLASS: ASME SECT III CL B	BUILDING: REACTOR
		SYSTEM SYMBOL: MAIN STEAM	ZN DRS
		PIPING SPEC.: SM-01 PS-1500.5	
		DRAWING NO.: MC-1419-13,20-00402	
		PROJECT: MCGUIRE	

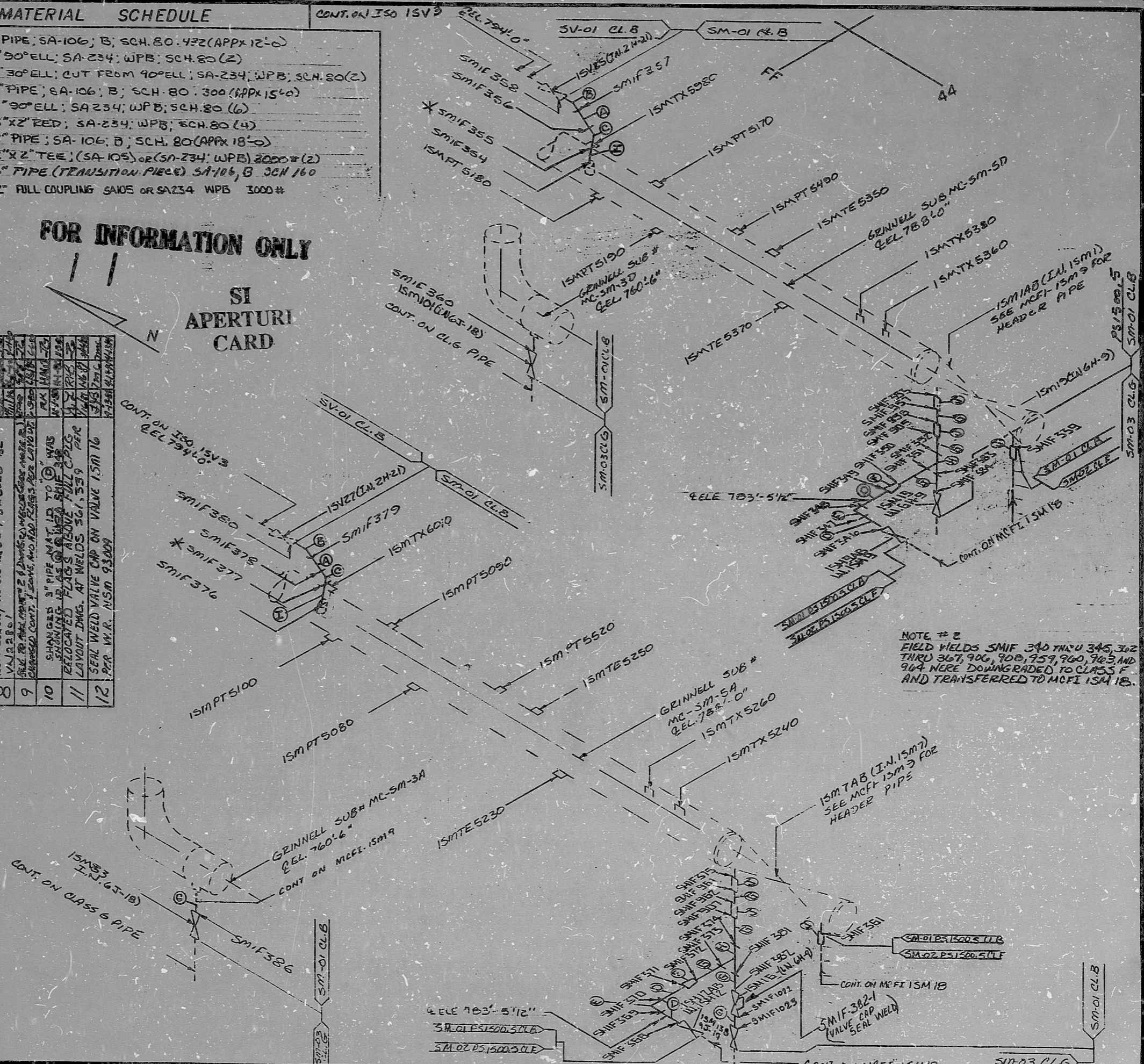
NO.	REVISION	DATE	DESCRIPTION
4	REVISED TO DELETE WELD SMIF 359 + 385		
3	ADD WELDS SMIF 357-364, MAT. J AND ELEVATION 783'-5 1/2" (MCFI 5535)		
2	ADD MAT (1) AND WELDS SMIF 905-908		
1	ADDED TRANSITION PIECES AND NOTE (UN 11608)		
0	REL FOR CONSTRUCTION		

NO.	REVISION	DATE	DESCRIPTION
5	ADD CONT. AT VALVE ISM18		
6	NEAR 955'; ADDED WELDS SMIF 372, 373		
7	CHANGE IN OF VALVE ISM18 FROM 9 1/2" TO 9 1/4"		
8	REP. WELD ON 3" VALVE		
9	VALVE 3" 1/2" (MCFI 5535)		
10	CHANGED 3" PIPE MAT. TO (1) WAS SHOWING FLAKES ABOVE FULL CPDS		
11	RELOCATED FLAKES ABOVE FULL CPDS LAYOUT DIMS. AT WELDS 361, 359		
12	SEAL WELD VALVE CAP ON VALVE ISM16 PER W.R. NSM 93009		

NO.	REVISION	DATE	DESCRIPTION
*NOTE #1	TREASURE END OF TRANSITION PIECES: O.D. TO BE GROUDED WITH MAX. 3 TO 1 TAPER WITH A MIN. WALL OF .182"		

MATERIAL SCHEDULE	
(1)	6" PIPE; SA-106; B; SCH. 80. 432 (APPX 12'-0")
(2)	6" 90° ELL; SA-234; WPB; SCH. 80 (2)
(3)	6" 30° ELL; CUT FROM 90° ELL; SA-234; WPB; SCH. 80 (2)
(4)	3" PIPE; SA-106; B; SCH. 80. 300 (APPX 15'-0")
(5)	3" 90° ELL; SA-234; WPB; SCH. 80 (6)
(6)	3" X 2" RED; SA-234; WPB; SCH. 80 (4)
(7)	2" PIPE; SA-106; B; SCH. 80 (APPX 18'-0")
(8)	2" X 2" TEE; (SA-106) OR (SA-234; WPB) 2000# (2)
(9)	6" PIPE (TRANSITION PIECE) SA-106; B SCH 160
(10)	2" FULL COUPLING SA105 OR SA234 WPB 3000#

FOR INFORMATION ONLY  
SI APERTURE CARD



NOTE #2  
FIELD WELDS SMIF 340 THRU 345, 362 THRU 367, 906, 908, 959, 960, 963, AND 964 WERE DOWNGRADED TO CLASS F AND TRANSFERRED TO MCFI ISM18.

8903280376

PDR RIDS

