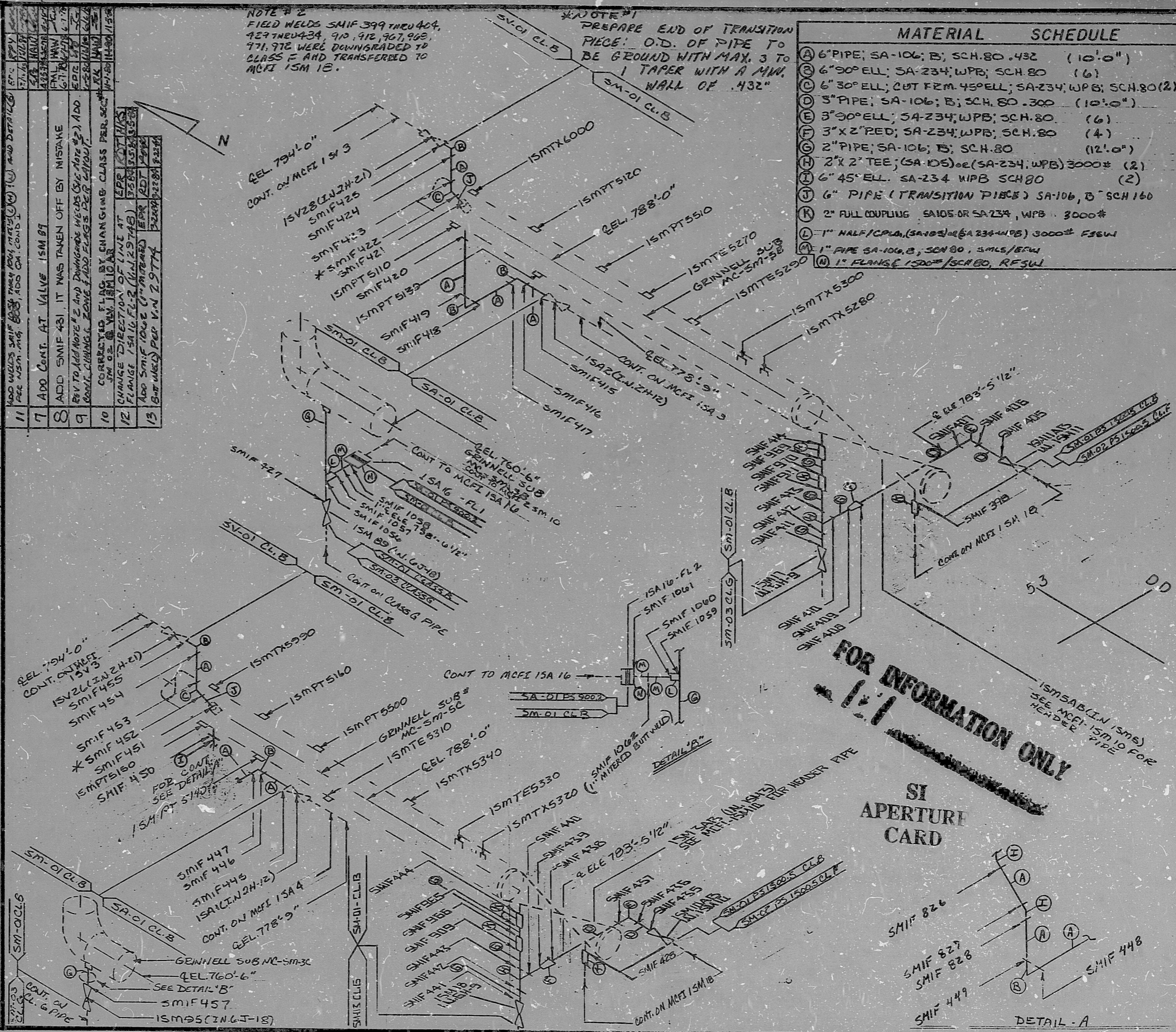


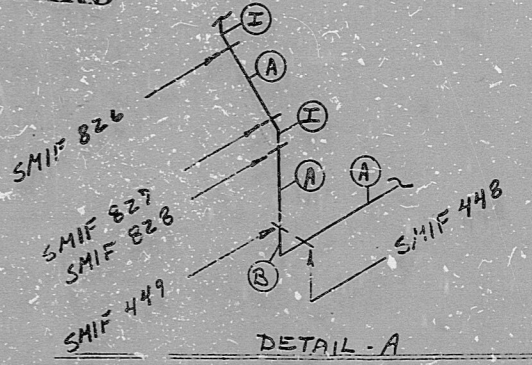
REV. 13	IN SERVICE INSPECTION	REV. 13	ADD WELDS SMIF 399 THRU 404, 427 THRU 434, 910, 912, 967, 968, 971, 972 WERE DOWNGRADED TO CLASS F AND TRANSFERRED TO MCFI 15M 12.
ISO NO: MCFI-ISM 14	DUKE PIPING CLASS: ASME SECT III CLB	ISO NO: MCFI-ISM 14	FIELD WELDS SMIF 399 THRU 404, 427 THRU 434, 910, 912, 967, 968, 971, 972 WERE DOWNGRADED TO CLASS F AND TRANSFERRED TO MCFI 15M 12.
SYSTEM SYMBOL: MAIN STEAM	PIPING SPEC: SM-01 PS-1500.5	DUKE PIPING CLASS: ASME SECT III CLB	FIELD WELDS SMIF 399 THRU 404, 427 THRU 434, 910, 912, 967, 968, 971, 972 WERE DOWNGRADED TO CLASS F AND TRANSFERRED TO MCFI 15M 12.
DRAWING NO: MC-1419-13.20-00402	PROJECT: MCGUIRE	SYSTEM SYMBOL: MAIN STEAM	FIELD WELDS SMIF 399 THRU 404, 427 THRU 434, 910, 912, 967, 968, 971, 972 WERE DOWNGRADED TO CLASS F AND TRANSFERRED TO MCFI 15M 12.
NO.	REVISION	DATE	BY
5	ADD WELDS AT VALVE ISM 87	11-27-77	SM
4	ADD SMIF 431. IT WAS TAKEN OFF BY MISTAKE	11-27-77	SM
3	ADD TO ADD NOTE 2 AND DOWNGRADE WELDS (SEE NOTE 2) ADD CORRECT FLAG BY CHANGING CLASS PER SEC. 11.2.1	11-27-77	SM
2	CHANGE DIRECTION OF LINE AT FLANGE 1 SA 10 FL 2 (SEE DETAIL B)	11-27-77	SM
1	ADD SMIF 1062 (MATERIAL) PER V-N 29774	11-27-77	SM
0	REL FOR CONSTRUCTION	11-27-77	SM



MATERIAL	SCHEDULE
(A) 6" PIPE; SA-106; B; SCH. 80 .432	(10'-0")
(B) 6" 30° ELL; SA-234; WPB; SCH. 80	(6)
(C) 6" 30° ELL; CUT FRM. 45° ELL; SA-234; WPB; SCH. 80 (2)	(10'-0")
(D) 3" PIPE; SA-106; B; SCH. 80 .300	(10'-0")
(E) 3" 30° ELL; SA-234; WPB; SCH. 80	(6)
(F) 3" X 2" RED; SA-234; WPB; SCH. 80	(4)
(G) 2" PIPE; SA-106; B; SCH. 80	(12'-0")
(H) 2" X 2" TEE; (SA-106) or (SA-234; WPB) 3000#	(2)
(I) 6" 45° ELL. SA-234 WPB SCH 80	(2)
(J) 6" PIPE (TRANSITION PIPES) SA-106, B SCH 160	
(K) 2" FULL COUPLING SA-106 OR SA-234, WPB 3000#	
(L) 1" HALF COUPLER (SA-106) or (SA-234; WPB) 3000# FSW	
(M) 1" PIPE SA-106, B, SCH 80, 3 SMLS/BSW	
(N) 1" FLANGE 1500# / SCH 80, RFSW	

FOR INFORMATION ONLY

SI APERTURE CARD





8903280373

PDR RIDS

